

**SH-PTP2 Polyclonal Antibody**  
Catalog # AP72478**Specification****SH-PTP2 Polyclonal Antibody - Product Information**

Application	WB
Primary Accession	<a href="#">Q06124</a>
Reactivity	Human, Mouse, Rat, Monkey
Host	Rabbit
Clonality	Polyclonal

**SH-PTP2 Polyclonal Antibody - Additional Information**

Gene ID 5781

**Other Names**

PTPN11; PTP2C; SHPTP2; Tyrosine-protein phosphatase non-receptor type 11; Protein-tyrosine phosphatase 1D; PTP-1D; Protein-tyrosine phosphatase 2C; PTP-2C; SH-PTP2; SHP-2; Shp2; SH-PTP3

**Dilution**

WB~~Western Blot: 1/500 - 1/2000. Immunohistochemistry: 1/100 - 1/300. ELISA: 1/40000. Not yet tested in other applications.

**Format**

Liquid in PBS containing 50% glycerol, 0.5% BSA and 0.09% (W/V) sodium azide.

**Storage Conditions**

-20°C

**SH-PTP2 Polyclonal Antibody - Protein Information**

Name PTPN11

Synonyms PTP2C, SHPTP2

**Function**

Acts downstream of various receptor and cytoplasmic protein tyrosine kinases to participate in the signal transduction from the cell surface to the nucleus (PubMed:[10655584](http://www.uniprot.org/citations/10655584)), PubMed:[18559669](http://www.uniprot.org/citations/18559669)), PubMed:[18829466](http://www.uniprot.org/citations/18829466)), PubMed:[26742426](http://www.uniprot.org/citations/26742426)), PubMed:[28074573](http://www.uniprot.org/citations/28074573)). Positively regulates MAPK signal transduction pathway (PubMed:[28074573](http://www.uniprot.org/citations/28074573)).

Dephosphorylates GAB1, ARHGAP35 and EGFR (PubMed:[28074573](http://www.uniprot.org/citations/28074573)).

Dephosphorylates ROCK2 at 'Tyr-722' resulting in stimulation of its RhoA binding activity (PubMed:<a href="http://www.uniprot.org/citations/18559669" target="\_blank">18559669</a>). Dephosphorylates CDC73 (PubMed:<a href="http://www.uniprot.org/citations/26742426" target="\_blank">26742426</a>). Dephosphorylates SOX9 on tyrosine residues, leading to inactivate SOX9 and promote ossification (By similarity). Dephosphorylates tyrosine-phosphorylated NEDD9/CAS-L (PubMed:<a href="http://www.uniprot.org/citations/19275884" target="\_blank">19275884</a>).

#### Cellular Location

Cytoplasm. Nucleus

#### Tissue Location

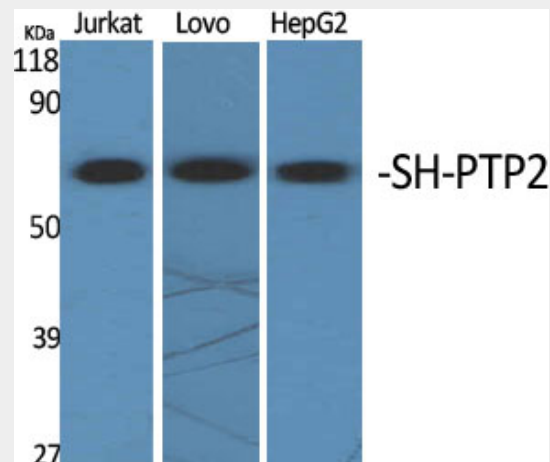
Widely expressed, with highest levels in heart, brain, and skeletal muscle.

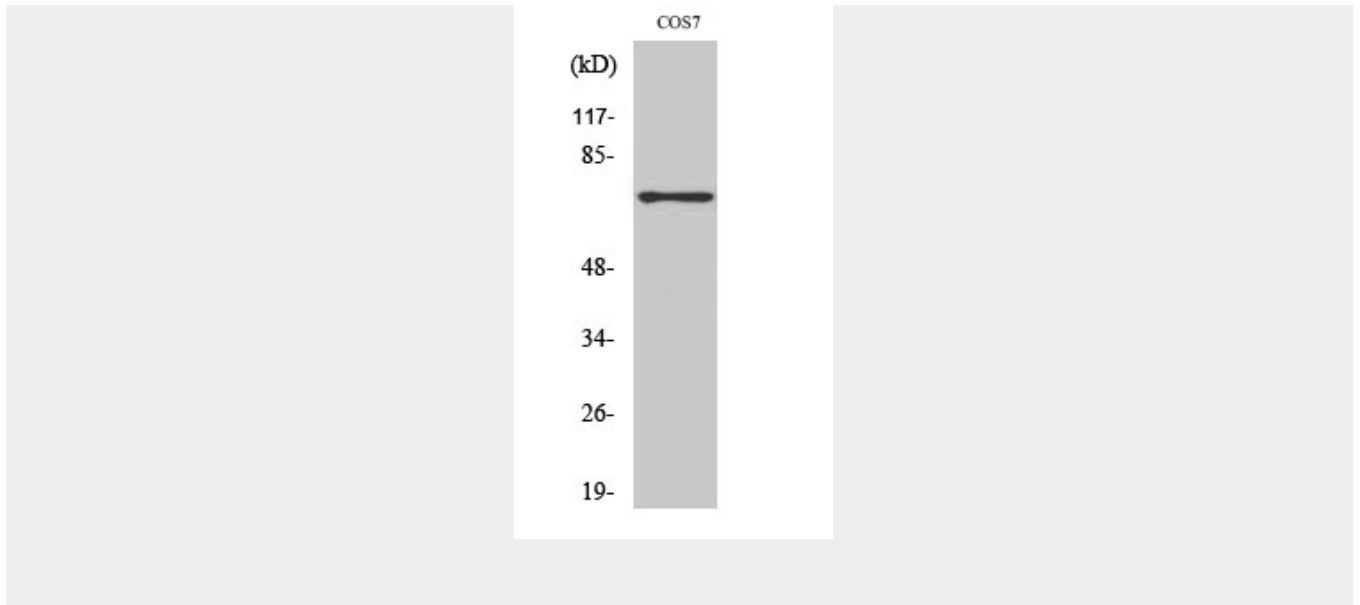
### SH-PTP2 Polyclonal Antibody - Protocols

Provided below are standard protocols that you may find useful for product applications.

- [Western Blot](#)
- [Blocking Peptides](#)
- [Dot Blot](#)
- [Immunohistochemistry](#)
- [Immunofluorescence](#)
- [Immunoprecipitation](#)
- [Flow Cytometry](#)
- [Cell Culture](#)

### SH-PTP2 Polyclonal Antibody - Images





### SH-PTP2 Polyclonal Antibody - Background

Acts downstream of various receptor and cytoplasmic protein tyrosine kinases to participate in the signal transduction from the cell surface to the nucleus. Positively regulates MAPK signal transduction pathway (PubMed:28074573). Dephosphorylates GAB1, ARHGAP35 and EGFR (PubMed:28074573). Dephosphorylates ROCK2 at 'Tyr-722' resulting in stimulation of its RhoA binding activity. Dephosphorylates CDC73 (PubMed:26742426).