

**Six5 Polyclonal Antibody**  
**Catalog # AP72491****Specification**

---

**Six5 Polyclonal Antibody - Product Information**

Application	WB
Primary Accession	<a href="#">Q8N196</a>
Reactivity	Human, Mouse
Host	Rabbit
Clonality	Polyclonal

**Six5 Polyclonal Antibody - Additional Information****Gene ID** 147912**Other Names**

SIX5; DMAHP; Homeobox protein SIX5; DM locus-associated homeodomain protein; Sine oculis homeobox homolog 5

**Dilution**

WB~~Western Blot: 1/500 - 1/2000. ELISA: 1/40000. Not yet tested in other applications.

**Format**

Liquid in PBS containing 50% glycerol, 0.5% BSA and 0.09% (W/V) sodium azide.

**Storage Conditions**

-20°C

**Six5 Polyclonal Antibody - Protein Information****Name** SIX5**Synonyms** DMAHP**Function**

Transcription factor that is thought to be involved in regulation of organogenesis. May be involved in determination and maintenance of retina formation. Binds a 5'-GGTGTCAG-3' motif present in the ARE regulatory element of ATP1A1. Binds a 5'-TCA[AG][AG]TTNC-3' motif present in the MEF3 element in the myogenin promoter, and in the IGFBP5 promoter (By similarity). Thought to be regulated by association with Dach and Eya proteins, and seems to be coactivated by EYA1, EYA2 and EYA3 (By similarity).

**Cellular Location**

Cytoplasm. Nucleus {ECO:0000255|PROSITE-ProRule:PRU00108, ECO:0000269|PubMed:12500905}

**Tissue Location**

Expressed in adult but not in fetal eyes. Found in corneal epithelium and endothelium, lens

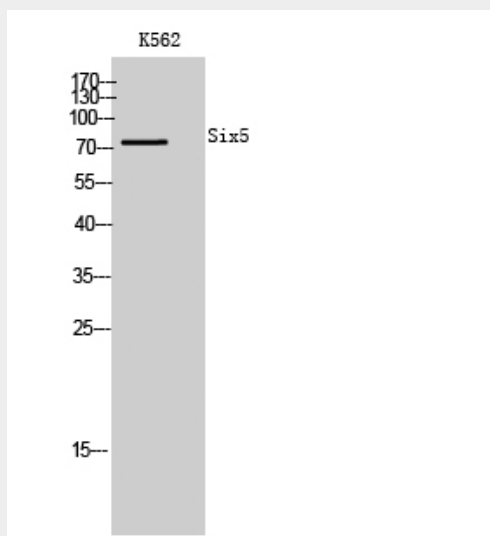
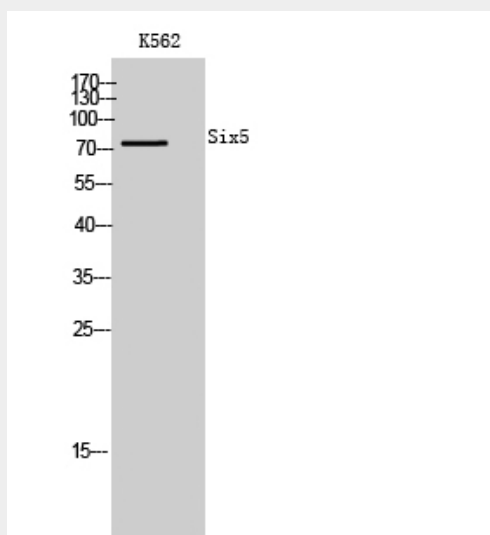
epithelium, ciliary body epithelia, cellular layers of the retina and the sclera

### Six5 Polyclonal Antibody - Protocols

Provided below are standard protocols that you may find useful for product applications.

- [Western Blot](#)
- [Blocking Peptides](#)
- [Dot Blot](#)
- [Immunohistochemistry](#)
- [Immunofluorescence](#)
- [Immunoprecipitation](#)
- [Flow Cytometry](#)
- [Cell Culture](#)

### Six5 Polyclonal Antibody - Images



**Six5 Polyclonal Antibody - Background**

Transcription factor that is thought to be involved in regulation of organogenesis. May be involved in determination and maintenance of retina formation. Binds a 5'-GGTGTCAG-3' motif present in the ARE regulatory element of ATP1A1. Binds a 5'- TCA[AG][AG]TTNC-3' motif present in the MEF3 element in the myogenin promoter, and in the IGFBP5 promoter (By similarity). Thought to be regulated by association with Dach and Eya proteins, and seems to be coactivated by EYA1, EYA2 and EYA3 (By similarity).