

SLC43A1 Polyclonal Antibody
Catalog # AP72498**Specification****SLC43A1 Polyclonal Antibody - Product Information**

Application	WB
Primary Accession	O75387
Reactivity	Human
Host	Rabbit
Clonality	Polyclonal

SLC43A1 Polyclonal Antibody - Additional Information**Gene ID** 8501**Other Names**

SLC43A1; LAT3; PB39; POV1; Large neutral amino acids transporter small subunit 3; L-type amino acid transporter 3; Prostate cancer overexpressed gene 1 protein; Solute carrier family 43 member 1

Dilution

WB~~Western Blot: 1/500 - 1/2000. ELISA: 1/20000. Not yet tested in other applications.

Format

Liquid in PBS containing 50% glycerol, 0.5% BSA and 0.09% (W/V) sodium azide.

Storage Conditions

-20°C

SLC43A1 Polyclonal Antibody - Protein Information**Name** SLC43A1 {ECO:0000312|EMBL:AAH01639.1}**Function**

Uniport that mediates the transport of neutral amino acids such as L-leucine, L-isoleucine, L-valine, and L-phenylalanine (PubMed:12930836). The transport activity is sodium ions-independent, electroneutral and mediated by a facilitated diffusion (PubMed:12930836).

Cellular Location

Cell membrane {ECO:0000250|UniProtKB:Q8BSM7}; Multi-pass membrane protein. Apical cell membrane; Multi-pass membrane protein. Endoplasmic reticulum membrane {ECO:0000250|UniProtKB:Q8BSM7}; Multi-pass membrane protein. Note=Located in the apical plasma membrane of the podocyte foot processes (PubMed:19443642). Located in the plasma membrane of liver and skeletal muscle, and in the endoplasmic reticulum and in crystalline inclusions in pancreatic acinar cells (By similarity). {ECO:0000250|UniProtKB:Q8BSM7, ECO:0000269|PubMed:19443642}

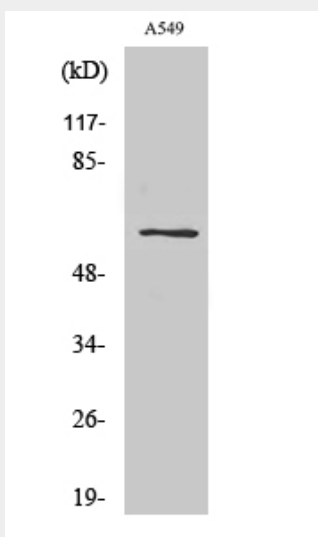
Tissue Location

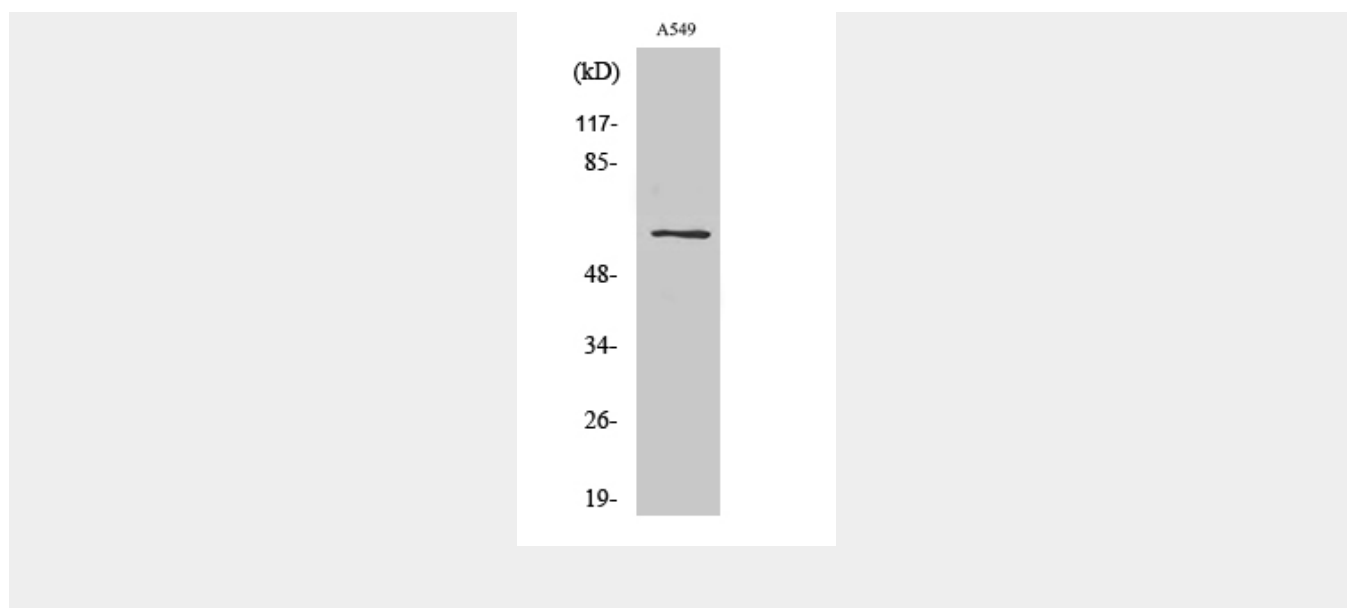
Ubiquitously expressed in fetus and adult (PubMed:9722952). Highest expression in adult pancreas, liver, skeletal muscle (PubMed:9722952, PubMed:12930836). In fetus, highest expression in liver and lower levels in kidney, and lung (PubMed:12930836) Exclusively expressed in the glomeruli along the glomerular capillary walls (PubMed:19443642).

SLC43A1 Polyclonal Antibody - Protocols

Provided below are standard protocols that you may find useful for product applications.

- [Western Blot](#)
- [Blocking Peptides](#)
- [Dot Blot](#)
- [Immunohistochemistry](#)
- [Immunofluorescence](#)
- [Immunoprecipitation](#)
- [Flow Cytometry](#)
- [Cell Culture](#)

SLC43A1 Polyclonal Antibody - Images



SLC43A1 Polyclonal Antibody - Background

Sodium-independent, high affinity transport of large neutral amino acids. Has narrower substrate selectivity compared to SLC7A5 and SLC7A8 and mainly transports branched-chain amino acids and phenylalanine. Plays a role in the development of human prostate cancer, from prostatic intraepithelial neoplasia to invasive prostate cancer.