

SLU7 Polyclonal Antibody
Catalog # AP72505**Specification**

SLU7 Polyclonal Antibody - Product Information

Application	WB
Primary Accession	O95391
Reactivity	Human, Mouse, Rat
Host	Rabbit
Clonality	Polyclonal

SLU7 Polyclonal Antibody - Additional Information**Gene ID** 10569**Other Names**

SLU7; Pre-mRNA-splicing factor SLU7; hSlu7

Dilution

WB~~Western Blot: 1/500 - 1/2000. ELISA: 1/40000. Not yet tested in other applications.

Format

Liquid in PBS containing 50% glycerol, 0.5% BSA and 0.09% (W/V) sodium azide.

Storage Conditions

-20°C

SLU7 Polyclonal Antibody - Protein Information**Name** SLU7**Function**

Required for pre-mRNA splicing as component of the spliceosome (PubMed:10197984, PubMed:28502770, PubMed:30705154). Participates in the second catalytic step of pre-mRNA splicing, when the free hydroxyl group of exon I attacks the 3'-splice site to generate spliced mRNA and the excised lariat intron. Required for holding exon 1 properly in the spliceosome and for correct AG identification when more than one possible AG exists in 3'-splicing site region. May be involved in the activation of proximal AG. Probably also involved in alternative splicing regulation.

Cellular Location

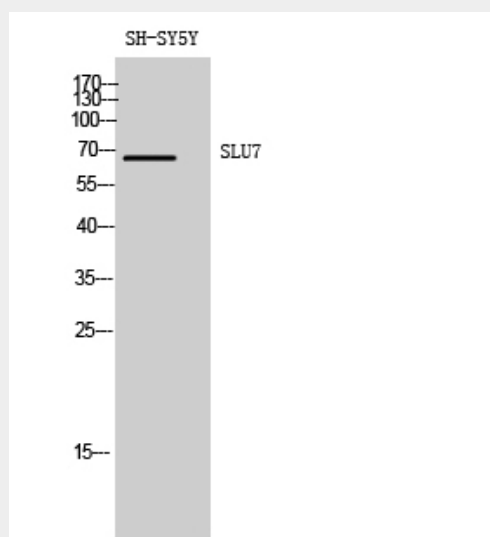
Nucleus. Nucleus speckle. Cytoplasm Note=Predominantly nuclear. Shuttling between the nucleus and the cytoplasm is regulated by the CCHC-type zinc finger. Upon UV-C stress stimulus, the nuclear concentration of the protein decreases, affecting alternative splicing. Translocates from the nucleus to the cytoplasm after heat shock cell treatment. Accumulates in cytoplasmic vesicle-like organelles after heat shock treatment, which may represent stress granules.

SLU7 Polyclonal Antibody - Protocols

Provided below are standard protocols that you may find useful for product applications.

- [Western Blot](#)
- [Blocking Peptides](#)
- [Dot Blot](#)
- [Immunohistochemistry](#)
- [Immunofluorescence](#)
- [Immunoprecipitation](#)
- [Flow Cytometry](#)
- [Cell Culture](#)

SLU7 Polyclonal Antibody - Images



SLU7 Polyclonal Antibody - Background

Participates in the second catalytic step of pre-mRNA splicing, when the free hydroxyl group of exon I attacks the 3'- splice site to generate spliced mRNA and the excised lariat intron. Required for holding exon 1 properly in the spliceosome and for correct AG identification when more than one possible AG exists in 3'-splicing site region. May be involved in the activation of proximal AG. Probably also involved in alternative splicing regulation.