

SnoN Polyclonal Antibody
Catalog # AP72539**Specification**

SnoN Polyclonal Antibody - Product Information

Application	WB, IHC-P
Primary Accession	P12757
Reactivity	Human, Mouse
Host	Rabbit
Clonality	Polyclonal

SnoN Polyclonal Antibody - Additional Information**Gene ID** 6498**Other Names**

SKIL; SNO; Ski-like protein; Ski-related oncogene; Ski-related protein

Dilution

WB~~Western Blot: 1/500 - 1/2000. Immunohistochemistry: 1/100 - 1/300. ELISA: 1/40000. Not yet tested in other applications.

IHC-P~~N/A

Format

Liquid in PBS containing 50% glycerol, 0.5% BSA and 0.09% (W/V) sodium azide.

Storage Conditions

-20°C

SnoN Polyclonal Antibody - Protein Information**Name** SKIL**Synonyms** SNO**Function**

May have regulatory role in cell division or differentiation in response to extracellular signals.

Tissue Location

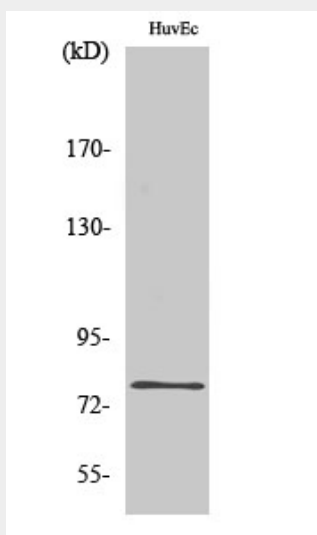
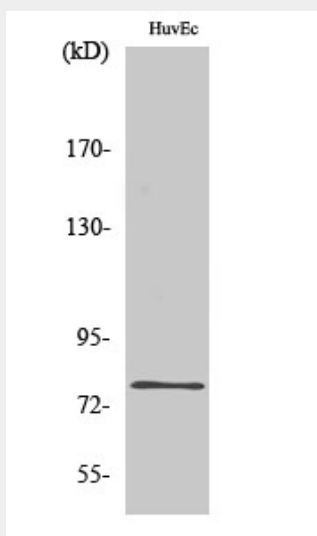
Isoform SNON and isoform SNOA are widely expressed. Highest expression is found in skeletal muscle, followed by placenta and lung. Lowest expression in heart, brain and pancreas. Isoform SNOI expression is restricted to skeletal muscle

SnoN Polyclonal Antibody - Protocols

Provided below are standard protocols that you may find useful for product applications.

- [Western Blot](#)
- [Blocking Peptides](#)
- [Dot Blot](#)
- [Immunohistochemistry](#)
- [Immunofluorescence](#)
- [Immunoprecipitation](#)
- [Flow Cytometry](#)
- [Cell Culture](#)

SnoN Polyclonal Antibody - Images



SnoN Polyclonal Antibody - Background

May have regulatory role in cell division or differentiation in response to extracellular signals.