

**SOD-1 Polyclonal Antibody**  
**Catalog # AP72547****Specification**

---

**SOD-1 Polyclonal Antibody - Product Information**

Application	WB
Primary Accession	<a href="#">P00441</a>
Reactivity	Human, Mouse, Rat
Host	Rabbit
Clonality	Polyclonal

**SOD-1 Polyclonal Antibody - Additional Information****Gene ID** 6647**Other Names**

SOD1; Superoxide dismutase [Cu-Zn]; Superoxide dismutase 1; hSod1

**Dilution**

WB~~Western Blot: 1/500 - 1/2000. ELISA: 1/10000. Not yet tested in other applications.

**Format**

Liquid in PBS containing 50% glycerol, 0.5% BSA and 0.09% (W/V) sodium azide.

**Storage Conditions**

-20°C

**SOD-1 Polyclonal Antibody - Protein Information****Name** SOD1 ([HGNC:11179](#))**Function**

Destroys radicals which are normally produced within the cells and which are toxic to biological systems.

**Cellular Location**

Cytoplasm. Nucleus. Note=Predominantly cytoplasmic; the pathogenic variants ALS1 Arg-86 and Ala-94 gradually aggregates and accumulates in mitochondria.

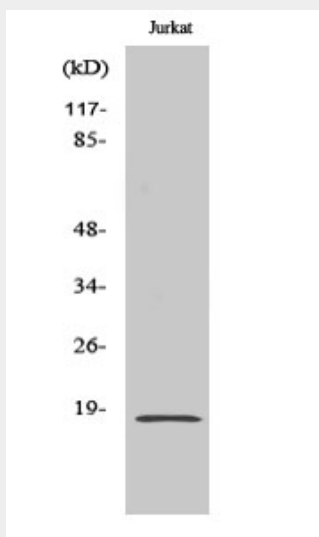
**SOD-1 Polyclonal Antibody - Protocols**

Provided below are standard protocols that you may find useful for product applications.

- [Western Blot](#)
- [Blocking Peptides](#)
- [Dot Blot](#)

- [Immunohistochemistry](#)
- [Immunofluorescence](#)
- [Immunoprecipitation](#)
- [Flow Cytometry](#)
- [Cell Culture](#)

### **SOD-1 Polyclonal Antibody - Images**



### **SOD-1 Polyclonal Antibody - Background**

Destroys radicals which are normally produced within the cells and which are toxic to biological systems.