

CDC25B Antibody (S353)
Affinity Purified Rabbit Polyclonal Antibody (Pab)
Catalog # AP7256e**Specification**

CDC25B Antibody (S353) - Product Information

Application	WB,E
Primary Accession	P30305
Reactivity	Human
Host	Rabbit
Clonality	Polyclonal
Isotype	Rabbit IgG
Calculated MW	64987
Antigen Region	331-360

CDC25B Antibody (S353) - Additional Information**Gene ID** 994**Other Names**

M-phase inducer phosphatase 2, Dual specificity phosphatase Cdc25B, CDC25B, CDC25HU2

Target/Specificity

This CDC25B antibody is generated from rabbits immunized with a KLH conjugated synthetic peptide between 331-360 amino acids from human CDC25B.

Dilution

WB~~1:1000

E~~Use at an assay dependent concentration.

Format

Purified polyclonal antibody supplied in PBS with 0.09% (W/V) sodium azide. This antibody is purified through a protein A column, followed by peptide affinity purification.

Storage

Maintain refrigerated at 2-8°C for up to 2 weeks. For long term storage store at -20°C in small aliquots to prevent freeze-thaw cycles.

Precautions

CDC25B Antibody (S353) is for research use only and not for use in diagnostic or therapeutic procedures.

CDC25B Antibody (S353) - Protein Information**Name** CDC25B**Synonyms** CDC25HU2

Function Tyrosine protein phosphatase which functions as a dosage- dependent inducer of mitotic progression (PubMed:[1836978](#), PubMed:[20360007](#)). Directly dephosphorylates CDK1 and stimulates its kinase activity (PubMed:[20360007](#)). Required for G2/M phases of the cell cycle progression and abscission during cytokinesis in a ECT2-dependent manner (PubMed:[17332740](#)). The three isoforms seem to have a different level of activity (PubMed:[1836978](#)).

Cellular Location

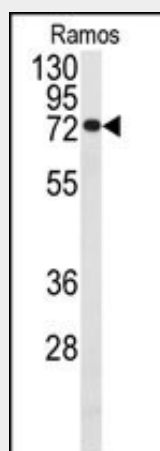
Cytoplasm, cytoskeleton, microtubule organizing center, centrosome. Cytoplasm, cytoskeleton, spindle pole

CDC25B Antibody (S353) - Protocols

Provided below are standard protocols that you may find useful for product applications.

- [Western Blot](#)
- [Blocking Peptides](#)
- [Dot Blot](#)
- [Immunohistochemistry](#)
- [Immunofluorescence](#)
- [Immunoprecipitation](#)
- [Flow Cytometry](#)
- [Cell Culture](#)

CDC25B Antibody (S353) - Images



Western blot analysis of anti-CDC25B Antibody (S353) (Cat.#AP7256e) in Ramos cell line lysates (35ug/lane). CDC25B (arrow) was detected using the purified Pab.

CDC25B Antibody (S353) - Background

CDC25B is a member of the CDC25 family of phosphatases. CDC25B activates the cyclin dependent kinase CDC2 by removing two phosphate groups and it is required for entry into mitosis. CDC25B shuttles between the nucleus and the cytoplasm due to nuclear localization and nuclear export signals. The protein is nuclear in the M and G1 phases of the cell cycle and moves to the cytoplasm during S and G2. CDC25B has oncogenic properties, although its role in tumor formation has not been determined.

CDC25B Antibody (S353) - References

Uchida, S., et al., Biochem. Biophys. Res. Commun. 316(1):226-232 (2004).

Ito, Y., et al., Int. J. Mol. Med. 13(3):431-435 (2004).
Wu, W., et al., Cancer Res. 63(19):6195-6199 (2003).
Mils, V., et al., Exp. Cell Res. 285(1):99-106 (2003).
Theis-Febvre, N., et al., Oncogene 22(2):220-232 (2003).