

**SREBP-1 Polyclonal Antibody**  
**Catalog # AP72594****Specification****SREBP-1 Polyclonal Antibody - Product Information**

Application	WB, IHC-P
Primary Accession	<a href="#">P36956</a>
Reactivity	Human, Rat
Host	Rabbit
Clonality	Polyclonal

**SREBP-1 Polyclonal Antibody - Additional Information****Gene ID** 6720**Other Names**

SREBF1; BHLHD1; SREBP1; Sterol regulatory element-binding protein 1; SREBP-1; Class D basic helix-loop-helix protein 1; bHLHd1; Sterol regulatory element-binding transcription factor 1

**Dilution**

WB~~Western Blot: 1/500 - 1/2000. Immunohistochemistry: 1/100 - 1/300. ELISA: 1/20000. Not yet tested in other applications.

IHC-P~~N/A

**Format**

Liquid in PBS containing 50% glycerol, 0.5% BSA and 0.09% (W/V) sodium azide.

**Storage Conditions**

-20°C

**SREBP-1 Polyclonal Antibody - Protein Information****Name** SREBF1 {ECO:0000303|PubMed:7759101, ECO:0000312|HGNC:HGNC:11289}**Function**

[Sterol regulatory element-binding protein 1]: Precursor of the transcription factor form (Processed sterol regulatory element-binding protein 1), which is embedded in the endoplasmic reticulum membrane (PubMed:<[a href="http://www.uniprot.org/citations/32322062"](http://www.uniprot.org/citations/32322062)>32322062</a>). Low sterol concentrations promote processing of this form, releasing the transcription factor form that translocates into the nucleus and activates transcription of genes involved in cholesterol biosynthesis and lipid homeostasis (By similarity).

**Cellular Location**

[Sterol regulatory element-binding protein 1]: Endoplasmic reticulum membrane; Multi-pass membrane protein. Golgi apparatus membrane; Multi-pass membrane protein. Cytoplasmic vesicle, COPII-coated vesicle membrane {ECO:0000250|UniProtKB:Q9WTN3}; Multi-pass membrane protein. Note=At high sterol concentrations, the SCAP-SREBP is retained in the endoplasmic reticulum. Low sterol concentrations promote recruitment into COPII-coated vesicles

and transport of the SCAP-SREBP to the Golgi, where it is processed  
{ECO:0000250|UniProtKB:Q9WTN3} [Isoform SREBP-1aDelta]: Nucleus

#### Tissue Location

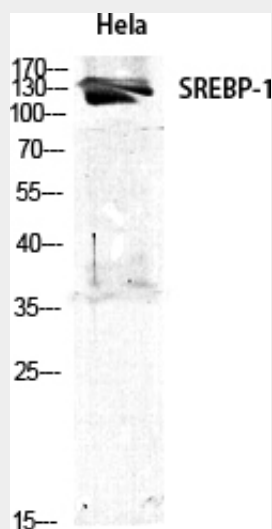
Expressed in a wide variety of tissues, most abundant in liver and adrenal gland (PubMed:8402897). In fetal tissues lung and liver shows highest expression (PubMed:8402897) [Isoform SREBP-1C]: Predominantly expressed in liver and adipose tissues (PubMed:8402897). Also expressed in kidney, brain, white fat, and muscle (PubMed:8402897)

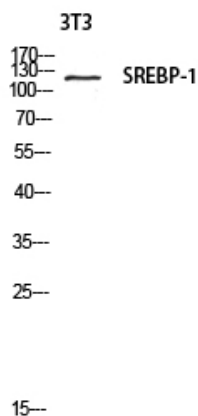
#### SREBP-1 Polyclonal Antibody - Protocols

Provided below are standard protocols that you may find useful for product applications.

- [Western Blot](#)
- [Blocking Peptides](#)
- [Dot Blot](#)
- [Immunohistochemistry](#)
- [Immunofluorescence](#)
- [Immunoprecipitation](#)
- [Flow Cytometry](#)
- [Cell Culture](#)

#### SREBP-1 Polyclonal Antibody - Images





### **SREBP-1 Polyclonal Antibody - Background**

Transcriptional activator required for lipid homeostasis. Regulates transcription of the LDL receptor gene as well as the fatty acid and to a lesser degree the cholesterol synthesis pathway (By similarity). Binds to the sterol regulatory element 1 (SRE-1) (5'-ATCACCCCAC-3'). Has dual sequence specificity binding to both an E-box motif (5'-ATCACGTGA-3') and to SRE-1 (5'-ATCACCCCAC-3').