

RICTOR Antibody (Center)
Purified Rabbit Polyclonal Antibody (Pab)
Catalog # AP7259c**Specification**

RICTOR Antibody (Center) - Product Information

Application	WB,E
Primary Accession	Q6R327
Reactivity	Human, Mouse
Host	Rabbit
Clonality	Polyclonal
Isotype	Rabbit IgG
Calculated MW	192218
Antigen Region	805-835

RICTOR Antibody (Center) - Additional Information**Gene ID** 253260**Other Names**Rapamycin-insensitive companion of mTOR, AVO3 homolog, hAVO3, RICTOR
{ECO:0000312|EMBL:EAW559801}**Target/Specificity**

This RICTOR antibody is generated from rabbits immunized with a KLH conjugated synthetic peptide between 805-835 amino acids from the Central region of human RICTOR.

Dilution

WB~~1:1000

Format

Purified polyclonal antibody supplied in PBS with 0.09% (W/V) sodium azide. This antibody is prepared by Saturated Ammonium Sulfate (SAS) precipitation followed by dialysis against PBS.

Storage

Maintain refrigerated at 2-8°C for up to 2 weeks. For long term storage store at -20°C in small aliquots to prevent freeze-thaw cycles.

Precautions

RICTOR Antibody (Center) is for research use only and not for use in diagnostic or therapeutic procedures.

RICTOR Antibody (Center) - Protein Information**Name** RICTOR ([HGNC:28611](#))**Function** Subunit of mTORC2, which regulates cell growth and survival in response to hormonal signals. mTORC2 is activated by growth factors, but, in contrast to mTORC1, seems to be

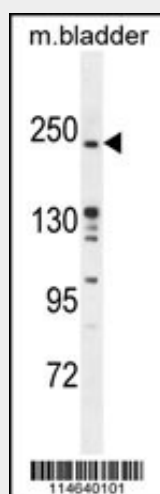
nutrient-insensitive. mTORC2 seems to function upstream of Rho GTPases to regulate the actin cytoskeleton, probably by activating one or more Rho-type guanine nucleotide exchange factors. mTORC2 promotes the serum-induced formation of stress-fibers or F-actin. mTORC2 plays a critical role in AKT1 'Ser-473' phosphorylation, which may facilitate the phosphorylation of the activation loop of AKT1 on 'Thr-308' by PDK1 which is a prerequisite for full activation. mTORC2 regulates the phosphorylation of SGK1 at 'Ser-422'. mTORC2 also modulates the phosphorylation of PRKCA on 'Ser-657'. Plays an essential role in embryonic growth and development.

RICTOR Antibody (Center) - Protocols

Provided below are standard protocols that you may find useful for product applications.

- [Western Blot](#)
- [Blocking Peptides](#)
- [Dot Blot](#)
- [Immunohistochemistry](#)
- [Immunofluorescence](#)
- [Immunoprecipitation](#)
- [Flow Cytometry](#)
- [Cell Culture](#)

RICTOR Antibody (Center) - Images



RICTOR Antibody (Center) (Cat.#AP7259c) western blot analysis in mouse bladder tissue lysates (35ug/lane). This demonstrates the RICTOR antibody detected the RICTOR protein (arrow).

RICTOR Antibody (Center) - Background

RICTOR and MTOR (FRAP1) are components of a protein complex that integrates nutrient- and growth factor-derived signals to regulate cell growth.

RICTOR Antibody (Center) - References

Pearce, L.R., *Biochem. J.* 405 (3), 513-522 (2007)
Yang, Q., *Genes Dev.* 20 (20), 2820-2832 (2006)
Jacinto, E., *Cell* 127 (1), 125-137 (2006)