

SSH3 Polyclonal Antibody
Catalog # AP72611**Specification**

SSH3 Polyclonal Antibody - Product Information

Application	WB, IHC-P
Primary Accession	Q8TE77
Reactivity	Human, Mouse, Rat
Host	Rabbit
Clonality	Polyclonal

SSH3 Polyclonal Antibody - Additional Information**Gene ID** 54961**Other Names**

SSH3; SSH3L; Protein phosphatase Slingshot homolog 3; SSH-like protein 3; SSH-3L; hSSH-3L

Dilution

WB~~Western Blot: 1/500 - 1/2000. Immunohistochemistry: 1/100 - 1/300. ELISA: 1/40000. Not yet tested in other applications.

IHC-P~~N/A

Format

Liquid in PBS containing 50% glycerol, 0.5% BSA and 0.09% (W/V) sodium azide.

Storage Conditions

-20°C

SSH3 Polyclonal Antibody - Protein Information**Name** SSH3**Synonyms** SSH3L**Function**

Protein phosphatase which may play a role in the regulation of actin filament dynamics. Can dephosphorylate and activate the actin binding/depolymerizing factor cofilin, which subsequently binds to actin filaments and stimulates their disassembly (By similarity).

Cellular Location

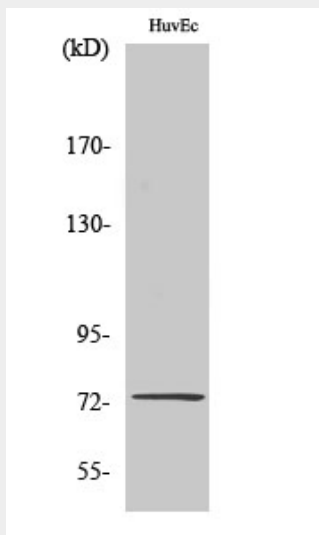
Cytoplasm, cytoskeleton. Nucleus

SSH3 Polyclonal Antibody - Protocols

Provided below are standard protocols that you may find useful for product applications.

- [Western Blot](#)
- [Blocking Peptides](#)
- [Dot Blot](#)
- [Immunohistochemistry](#)
- [Immunofluorescence](#)
- [Immunoprecipitation](#)
- [Flow Cytometry](#)
- [Cell Culture](#)

SSH3 Polyclonal Antibody - Images



SSH3 Polyclonal Antibody - Background

Protein phosphatase which may play a role in the regulation of actin filament dynamics. Can dephosphorylate and activate the actin binding/depolymerizing factor cofilin, which subsequently binds to actin filaments and stimulates their disassembly (By similarity).