

**beta 2 Adrenergic Receptor (BAR2) Antibody (N-term)**  
**Affinity Purified Rabbit Polyclonal Antibody (Pab)**  
**Catalog # AP7263A****Specification**

---

**beta 2 Adrenergic Receptor (BAR2) Antibody (N-term) - Product Information**

|                   |                           |
|-------------------|---------------------------|
| Application       | WB,E                      |
| Primary Accession | <a href="#">P07550</a>    |
| Other Accession   | <a href="#">NP_000015</a> |
| Reactivity        | Human                     |
| Host              | Rabbit                    |
| Clonality         | Polyclonal                |
| Isotype           | Rabbit IgG                |
| Antigen Region    | 1-30                      |

**beta 2 Adrenergic Receptor (BAR2) Antibody (N-term) - Additional Information****Gene ID** 154**Other Names**

Beta-2 adrenergic receptor, Beta-2 adrenoreceptor, Beta-2 adrenoceptor, ADRB2, ADRB2R, B2AR

**Target/Specificity**

This beta 2 Adrenergic Receptor (BAR2) antibody is generated from rabbits immunized with a KLH conjugated synthetic peptide between 1-30 amino acids from the N-terminal region of human beta 2 Adrenergic Receptor (BAR2).

**Dilution**

WB~~1:1000

E~~Use at an assay dependent concentration.

**Format**

Purified polyclonal antibody supplied in PBS with 0.09% (W/V) sodium azide. This antibody is purified through a protein A column, followed by peptide affinity purification.

**Storage**

Maintain refrigerated at 2-8°C for up to 2 weeks. For long term storage store at -20°C in small aliquots to prevent freeze-thaw cycles.

**Precautions**

beta 2 Adrenergic Receptor (BAR2) Antibody (N-term) is for research use only and not for use in diagnostic or therapeutic procedures.

**beta 2 Adrenergic Receptor (BAR2) Antibody (N-term) - Protein Information****Name** ADRB2**Synonyms** ADRB2R, B2AR

**Function** Beta-adrenergic receptors mediate the catecholamine-induced activation of adenylyl cyclase through the action of G proteins. The beta-2-adrenergic receptor binds epinephrine with an approximately 30- fold greater affinity than it does norepinephrine.

#### **Cellular Location**

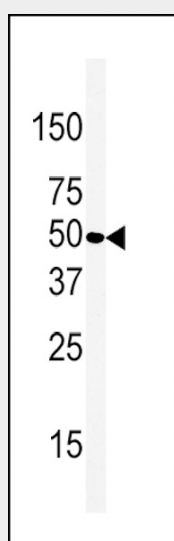
Cell membrane; Multi-pass membrane protein. Early endosome. Golgi apparatus. Note=Colocalizes with VHL at the cell membrane (PubMed:19584355). Activated receptors are internalized into endosomes prior to their degradation in lysosomes (PubMed:20559325) Activated receptors are also detected within the Golgi apparatus (PubMed:27481942).

### **beta 2 Adrenergic Receptor (BAR2) Antibody (N-term) - Protocols**

Provided below are standard protocols that you may find useful for product applications.

- [Western Blot](#)
- [Blocking Peptides](#)
- [Dot Blot](#)
- [Immunohistochemistry](#)
- [Immunofluorescence](#)
- [Immunoprecipitation](#)
- [Flow Cytometry](#)
- [Cell Culture](#)

### **beta 2 Adrenergic Receptor (BAR2) Antibody (N-term) - Images**



Western blot analysis of anti-BAR2 Antibody (N-term)(Cat. #AP7263a) in HL60 cell line lysates (35ug/lane). BAR2(arrow) was detected using the purified Pab.

### **beta 2 Adrenergic Receptor (BAR2) Antibody (N-term) - Background**

This gene encodes beta-2-adrenergic receptor which is a member of the G protein-coupled receptor superfamily. This receptor is directly associated with one of its ultimate effectors, the class C L-type calcium channel Ca(V)1.2. This receptor-channel complex also contains a G protein, an adenylyl cyclase, cAMP-dependent kinase, and the counterbalancing phosphatase, PP2A. The assembly of the signaling complex provides a mechanism that ensures specific and rapid signaling by this G protein-coupled receptor. This gene is intronless. Different polymorphic forms, point mutations, and/or downregulation of this gene are associated with nocturnal asthma, obesity and

type 2 diabetes.

#### **beta 2 Adrenergic Receptor (BAR2) Antibody (N-term) - References**

Wolfarth,B., Metab. Clin. Exp. 56 (12), 1649-1651 (2007)

Cherezov,V., Science 318 (5854), 1258-1265 (2007)

#### **beta 2 Adrenergic Receptor (BAR2) Antibody (N-term) - Citations**

- [Enhanced Humoral Immunity in Mice Lacking CB1 and CB2 Receptors \(Cnr1 -/- /Cnr2 -/- Mice\) is not Due to Increased Splenic Noradrenergic Neuronal Activity.](#)
- [Matrix metalloproteinases cleave the beta2-adrenergic receptor in spontaneously hypertensive rats.](#)