

BAR2 Antibody (S261)
Affinity Purified Rabbit Polyclonal Antibody (Pab)
Catalog # AP7263d**Specification**

BAR2 Antibody (S261) - Product Information

Application	WB, IHC-P,E
Primary Accession	P07550
Other Accession	NP_000015
Reactivity	Human, Mouse
Host	Rabbit
Clonality	Polyclonal
Isotype	Rabbit IgG
Antigen Region	236-264

BAR2 Antibody (S261) - Additional Information**Gene ID** 154**Other Names**

Beta-2 adrenergic receptor, Beta-2 adrenoreceptor, Beta-2 adrenoceptor, ADRB2, ADRB2R, B2AR

Target/Specificity

This BAR2 antibody is generated from rabbits immunized with a KLH conjugated synthetic peptide between 236-264 amino acids from human BAR2.

Dilution

WB~~1:2000

IHC-P~~1:10~50

E~~Use at an assay dependent concentration.

Format

Purified polyclonal antibody supplied in PBS with 0.09% (W/V) sodium azide. This antibody is purified through a protein A column, followed by peptide affinity purification.

Storage

Maintain refrigerated at 2-8°C for up to 2 weeks. For long term storage store at -20°C in small aliquots to prevent freeze-thaw cycles.

Precautions

BAR2 Antibody (S261) is for research use only and not for use in diagnostic or therapeutic procedures.

BAR2 Antibody (S261) - Protein Information**Name** ADRB2**Synonyms** ADRB2R, B2AR

Function Beta-adrenergic receptors mediate the catecholamine-induced activation of adenylate cyclase through the action of G proteins. The beta-2-adrenergic receptor binds epinephrine with an approximately 30- fold greater affinity than it does norepinephrine.

Cellular Location

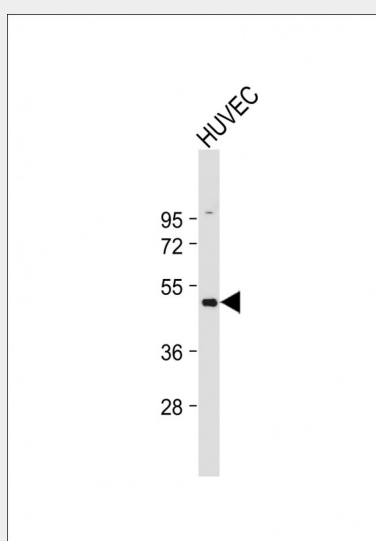
Cell membrane; Multi-pass membrane protein. Early endosome. Golgi apparatus. Note=Colocalizes with VHL at the cell membrane (PubMed:19584355). Activated receptors are internalized into endosomes prior to their degradation in lysosomes (PubMed:20559325) Activated receptors are also detected within the Golgi apparatus (PubMed:27481942).

BAR2 Antibody (S261) - Protocols

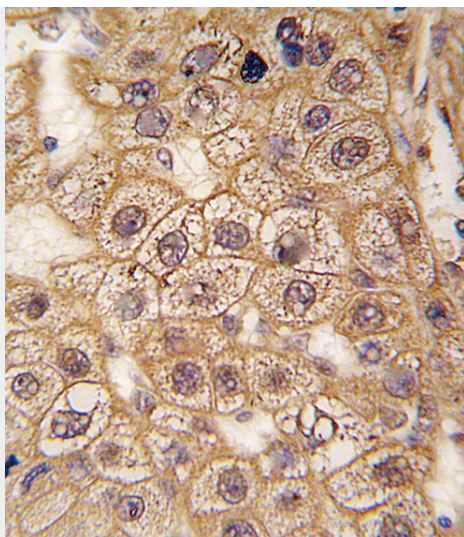
Provided below are standard protocols that you may find useful for product applications.

- [Western Blot](#)
- [Blocking Peptides](#)
- [Dot Blot](#)
- [Immunohistochemistry](#)
- [Immunofluorescence](#)
- [Immunoprecipitation](#)
- [Flow Cytometry](#)
- [Cell Culture](#)

BAR2 Antibody (S261) - Images



Anti-BAR2 Antibody (S261) at 1:2000 dilution + HUVEC whole cell lysate Lysates/proteins at 20 µg per lane. Secondary Goat Anti-Rabbit IgG, (H+L), Peroxidase conjugated at 1/10000 dilution. Predicted band size : 46 kDa Blocking/Dilution buffer: 5% NFDM/TBST.



Formalin-fixed and paraffin-embedded human hepatocarcinoma tissue reacted with BAR2 Antibody (S261) (Cat.#AP7263d), which was peroxidase-conjugated to the secondary antibody, followed by DAB staining. This data demonstrates the use of this antibody for immunohistochemistry; clinical relevance has not been evaluated.

BAR2 Antibody (S261) - Background

Beta-2-adrenergic receptor is a member of the G protein-coupled receptor superfamily. This receptor is directly associated with one of its ultimate effectors, the class C L-type calcium channel Ca(V)1.2. This receptor-channel complex also contains a G protein, an adenylyl cyclase, cAMP-dependent kinase, and the counterbalancing phosphatase, PP2A. The assembly of the signaling complex provides a mechanism that ensures specific and rapid signaling by this G protein-coupled receptor.

BAR2 Antibody (S261) - References

Wolfarth,B., Metab. Clin. Exp. 56 (12), 1649-1651 (2007)
Cherezov,V., Science 318 (5854), 1258-1265 (2007)

BAR2 Antibody (S261) - Citations

- [Enhanced Humoral Immunity in Mice Lacking CB1 and CB2 Receptors \(Cnr1 -/- /Cnr2 -/- Mice\) is not Due to Increased Splenic Noradrenergic Neuronal Activity.](#)