

**ADRB2 Antibody (T384)**  
**Affinity Purified Rabbit Polyclonal Antibody (Pab)**  
**Catalog # AP7263F****Specification**

---

**ADRB2 Antibody (T384) - Product Information**

Application	WB,E
Primary Accession	<a href="#">P07550</a>
Reactivity	Human
Host	Rabbit
Clonality	Polyclonal
Isotype	Rabbit IgG
Calculated MW	46459
Antigen Region	364-393

**ADRB2 Antibody (T384) - Additional Information****Gene ID** 154**Other Names**

Beta-2 adrenergic receptor, Beta-2 adrenoreceptor, Beta-2 adrenoceptor, ADRB2, ADRB2R, B2AR

**Target/Specificity**

This ADRB2 antibody is generated from rabbits immunized with a KLH conjugated synthetic peptide between 364-393 amino acids from human ADRB2.

**Dilution**

WB~~1:1000

E~~Use at an assay dependent concentration.

**Format**

Purified polyclonal antibody supplied in PBS with 0.09% (W/V) sodium azide. This antibody is purified through a protein A column, followed by peptide affinity purification.

**Storage**

Maintain refrigerated at 2-8°C for up to 2 weeks. For long term storage store at -20°C in small aliquots to prevent freeze-thaw cycles.

**Precautions**

ADRB2 Antibody (T384) is for research use only and not for use in diagnostic or therapeutic procedures.

**ADRB2 Antibody (T384) - Protein Information****Name** ADRB2**Synonyms** ADRB2R, B2AR

**Function** Beta-adrenergic receptors mediate the catecholamine-induced activation of adenylate cyclase through the action of G proteins. The beta-2-adrenergic receptor binds epinephrine with an approximately 30- fold greater affinity than it does norepinephrine.

#### **Cellular Location**

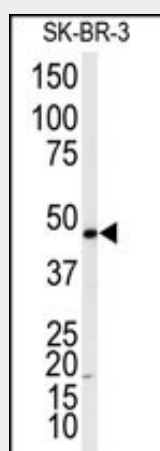
Cell membrane; Multi-pass membrane protein. Early endosome. Golgi apparatus. Note=Colocalizes with VHL at the cell membrane (PubMed:19584355). Activated receptors are internalized into endosomes prior to their degradation in lysosomes (PubMed:20559325) Activated receptors are also detected within the Golgi apparatus (PubMed:27481942).

### **ADRB2 Antibody (T384) - Protocols**

Provided below are standard protocols that you may find useful for product applications.

- [Western Blot](#)
- [Blocking Peptides](#)
- [Dot Blot](#)
- [Immunohistochemistry](#)
- [Immunofluorescence](#)
- [Immunoprecipitation](#)
- [Flow Cytometry](#)
- [Cell Culture](#)

### **ADRB2 Antibody (T384) - Images**



Western blot analysis of anti-ADRB2 Antibody (T384) (Cat.#AP7263f) in SK-BR-3 cell line lysates (35ug/lane). ADRB2 (arrow) was detected using the purified Pab.

### **ADRB2 Antibody (T384) - Background**

ADRB2, beta-2-adrenergic receptor which is a member of the G protein-coupled receptor superfamily. This receptor is directly associated with one of its ultimate effectors, the class C L-type calcium channel Ca(V)1.2. This receptor-channel complex also contains a G protein, an adenylyl cyclase, cAMP-dependent kinase, and the counterbalancing phosphatase, PP2A. The assembly of the signaling complex provides a mechanism that ensures specific and rapid signaling by this G protein-coupled receptor. This protein is intronless.

### **ADRB2 Antibody (T384) - References**

Kobilka B.K., Dixon R.A.F.Proc. Natl. Acad. Sci. U.S.A. 84:46-50(1987)

Emorine L.J., Marullo S. Proc. Natl. Acad. Sci. U.S.A. 84:6995-6999(1987)  
Kobilka B.K., Frielle T.J. Biol. Chem. 262:7321-7327(1987)