

STEAP1 Polyclonal Antibody
Catalog # AP72640**Specification**

STEAP1 Polyclonal Antibody - Product Information

Application	WB, IHC-P
Primary Accession	Q9UHE8
Reactivity	Human
Host	Rabbit
Clonality	Polyclonal

STEAP1 Polyclonal Antibody - Additional Information**Gene ID** 26872**Other Names**

STEAP1; PRSS24; STEAP; Metalloreductase STEAP1; Six-transmembrane epithelial antigen of prostate 1

Dilution

WB~~Western Blot: 1/500 - 1/2000. Immunohistochemistry: 1/100 - 1/300. ELISA: 1/10000. Not yet tested in other applications.

IHC-P~~N/A

Format

Liquid in PBS containing 50% glycerol, 0.5% BSA and 0.09% (W/V) sodium azide.

Storage Conditions

-20°C

STEAP1 Polyclonal Antibody - Protein Information**Name** STEAP1**Synonyms** PRSS24, STEAP**Function**

Does not function as a metalloreductase due to the absence of binding sites for the electron-donating substrate NADPH. Promotes Fe(3+) reduction when fused to the NADPH-binding domain of STEAP4.

Cellular Location

Endosome membrane {ECO:0000250|UniProtKB:Q9CWR7}; Multi-pass membrane protein. Cell membrane; Multi-pass membrane protein

Tissue Location

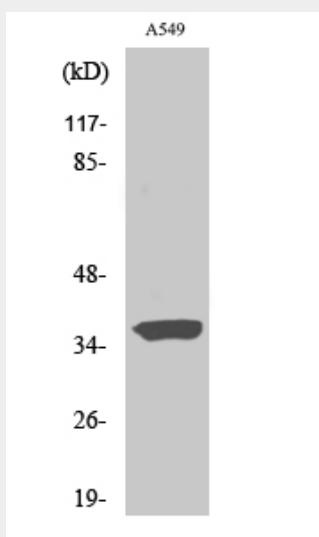
Ubiquitously expressed. Highly expressed in prostate tumors.

STEAP1 Polyclonal Antibody - Protocols

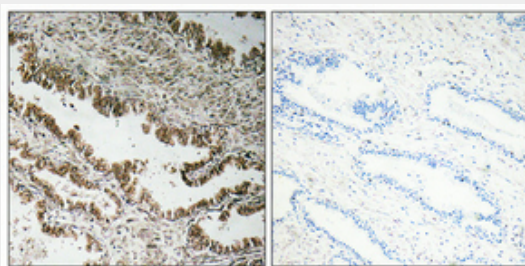
Provided below are standard protocols that you may find useful for product applications.

- [Western Blot](#)
- [Blocking Peptides](#)
- [Dot Blot](#)
- [Immunohistochemistry](#)
- [Immunofluorescence](#)
- [Immunoprecipitation](#)
- [Flow Cytometry](#)
- [Cell Culture](#)

STEAP1 Polyclonal Antibody - Images



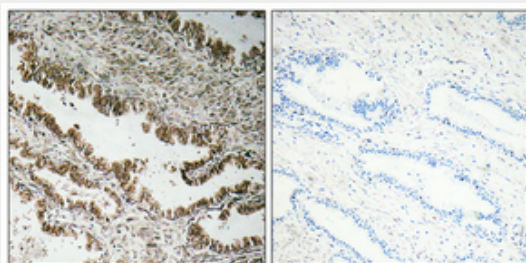
Western Blot analysis of various cells using STEAP1 Polyclonal Antibody



Immunohistochemical analysis of paraffin-embedded Human prostate cancer. Antibody was diluted at 1:100(4°,overnight). High-pressure and temperature Tris-EDTA,pH8.0 was used for antigen retrieval. Negative contrl (right) obtained from antibody was pre-absorbed by immunogen peptide.



Western Blot analysis of various cells using STEAP1 Polyclonal Antibody



Immunohistochemical analysis of paraffin-embedded Human prostate cancer. Antibody was diluted at 1:100(4°,overnight). High-pressure and temperature Tris-EDTA,pH8.0 was used for antigen retrieval. Negative contrl (right) obtained from antibody was pre-absorbed by immunogen peptide.

STEAP1 Polyclonal Antibody - Background

Metalloreductase that has the ability to reduce both Fe(3+) to Fe(2+) and Cu(2+) to Cu(1+). Uses NAD(+) as acceptor.