

Stonin-1 Polyclonal Antibody
Catalog # AP72646**Specification**

Stonin-1 Polyclonal Antibody - Product Information

Application	WB, IHC-P, IF
Primary Accession	Q9Y6Q2
Reactivity	Human
Host	Rabbit
Clonality	Polyclonal

Stonin-1 Polyclonal Antibody - Additional Information**Gene ID** 11037;286749**Other Names**

STON1; SALF; SBLF; STN1; Stonin-1; Stoned B-like factor

Dilution

WB~~Western Blot: 1/500 - 1/2000. Immunohistochemistry: 1/100 - 1/300. Immunofluorescence: 1/200 - 1/1000. ELISA: 1/10000. Not yet tested in other applications.
IHC-P~~N/A
IF~~1:50~200

Format

Liquid in PBS containing 50% glycerol, 0.5% BSA and 0.09% (W/V) sodium azide.

Storage Conditions

-20°C

Stonin-1 Polyclonal Antibody - Protein Information**Name** STON1**Synonyms** SALF, SBLF, STN1**Function**

May be involved in the endocytic machinery.

Cellular Location

Cytoplasm. Membrane. Note=Some fraction is membrane- associated

Tissue Location

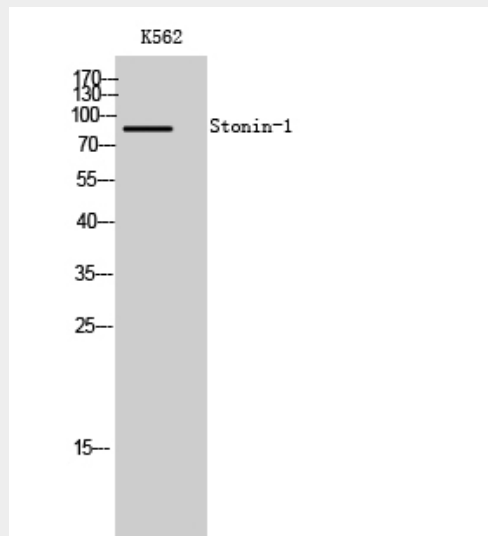
Ubiquitous..

Stonin-1 Polyclonal Antibody - Protocols

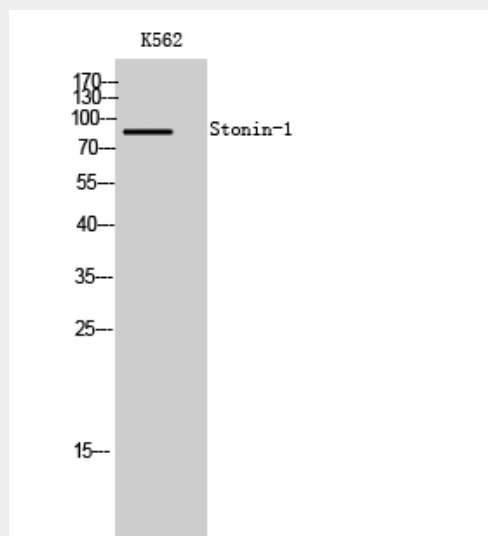
Provided below are standard protocols that you may find useful for product applications.

- [Western Blot](#)
- [Blocking Peptides](#)
- [Dot Blot](#)
- [Immunohistochemistry](#)
- [Immunofluorescence](#)
- [Immunoprecipitation](#)
- [Flow Cytometry](#)
- [Cell Culture](#)

Stonin-1 Polyclonal Antibody - Images



Western Blot analysis of K562 cells using Stonin-1 Polyclonal Antibody



Western Blot analysis of K562 cells using Stonin-1 Polyclonal Antibody

Stonin-1 Polyclonal Antibody - Background

May be involved in the endocytic machinery.