

Synuclein-γ Polyclonal Antibody
Catalog # AP72682**Specification**

Synuclein-γ Polyclonal Antibody - Product Information

Application	WB
Primary Accession	O76070
Reactivity	Human
Host	Rabbit
Clonality	Polyclonal

Synuclein-γ Polyclonal Antibody - Additional Information**Gene ID** 6623**Other Names**

SNCG; BCSG1; PERSYN; PRSN; Gamma-synuclein; Breast cancer-specific gene 1 protein; Persyn; Synoretin; SR

Dilution

WB~~Western Blot: 1/500 - 1/2000. Immunohistochemistry: 1/100 - 1/300. ELISA: 1/10000. Not yet tested in other applications.

Format

Liquid in PBS containing 50% glycerol, 0.5% BSA and 0.09% (W/V) sodium azide.

Storage Conditions

-20°C

Synuclein-γ Polyclonal Antibody - Protein Information**Name** SNCG**Synonyms** BCSG1, PERSYN, PRSN**Function**

Plays a role in neurofilament network integrity. May be involved in modulating axonal architecture during development and in the adult. In vitro, increases the susceptibility of neurofilament-H to calcium-dependent proteases (By similarity). May also function in modulating the keratin network in skin. Activates the MAPK and Elk-1 signal transduction pathway (By similarity).

Cellular Location

Cytoplasm, perinuclear region. Cytoplasm, cytoskeleton, microtubule organizing center, centrosome. Cytoplasm, cytoskeleton, spindle. Note=Associated with centrosomes in several interphase cells. In mitotic cells, localized to the poles of the spindle

Tissue Location

Highly expressed in brain, particularly in the substantia nigra. Also expressed in the corpus

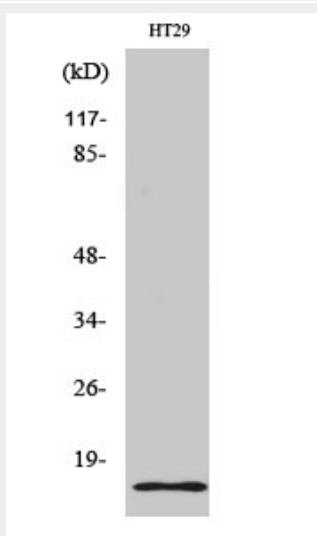
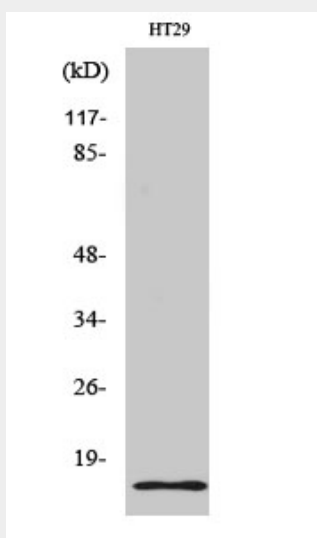
callosum, heart, skeletal muscle, ovary, testis, colon and spleen. Weak expression in pancreas, kidney and lung

Synuclein- γ Polyclonal Antibody - Protocols

Provided below are standard protocols that you may find useful for product applications.

- [Western Blot](#)
- [Blocking Peptides](#)
- [Dot Blot](#)
- [Immunohistochemistry](#)
- [Immunofluorescence](#)
- [Immunoprecipitation](#)
- [Flow Cytometry](#)
- [Cell Culture](#)

Synuclein- γ Polyclonal Antibody - Images



Synuclein- γ Polyclonal Antibody - Background

Plays a role in neurofilament network integrity. May be involved in modulating axonal architecture during development and in the adult. In vitro, increases the susceptibility of neurofilament-H to calcium-dependent proteases (By similarity). May also function in modulating the keratin network in skin. Activates the MAPK and Elk-1 signal transduction pathway (By similarity).