

REA (PHB2) Antibody (N-term)
Purified Rabbit Polyclonal Antibody (Pab)
Catalog # AP7270a**Specification**

REA (PHB2) Antibody (N-term) - Product Information

Application	IHC-P, WB,E
Primary Accession	Q99623
Other Accession	Q5XIH7 , Q35129 , Q5ZMN3 , Q2HJ97 , NP_009204
Reactivity	Human
Predicted	Bovine, Chicken, Mouse, Rat
Host	Rabbit
Clonality	Polyclonal
Isotype	Rabbit IgG
Calculated MW	33296
Antigen Region	66-95

REA (PHB2) Antibody (N-term) - Additional Information**Gene ID** 11331**Other Names**

Prohibitin-2, B-cell receptor-associated protein BAP37, D-prohibitin, Repressor of estrogen receptor activity, PHB2 {ECO:0000312|EMBL:AAH147661, ECO:0000312|HGNC:HGNC:30306}

Target/Specificity

This REA (PHB2) antibody is generated from rabbits immunized with a KLH conjugated synthetic peptide between 66-95 amino acids from the N-terminal region of human REA (PHB2).

Dilution

IHC-P~~1:10~50

WB~~1:1000

E~~Use at an assay dependent concentration.

Format

Purified polyclonal antibody supplied in PBS with 0.09% (W/V) sodium azide. This antibody is purified through a protein A column, followed by peptide affinity purification.

Storage

Maintain refrigerated at 2-8°C for up to 2 weeks. For long term storage store at -20°C in small aliquots to prevent freeze-thaw cycles.

Precautions

REA (PHB2) Antibody (N-term) is for research use only and not for use in diagnostic or therapeutic procedures.

REA (PHB2) Antibody (N-term) - Protein Information

Name PHB2 {ECO:0000312|EMBL:AAH14766.1, ECO:0000312|HGNC:HGNC:30306}

Function Protein with pleiotropic attributes mediated in a cell- compartment- and tissue-specific manner, which include the plasma membrane-associated cell signaling functions, mitochondrial chaperone, and transcriptional co-regulator of transcription factors and sex steroid hormones in the nucleus.

Cellular Location

Mitochondrion inner membrane. Cytoplasm. Nucleus. Cell membrane Note=Localizes within both nucleus and cytoplasm in proliferative primary myoblasts and mostly within the nucleus of differentiated primary myoblasts. [Isoform 2]: Mitochondrion inner membrane

Tissue Location

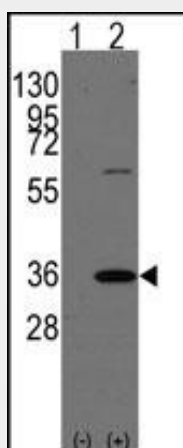
Expressed in myoblasts.

REA (PHB2) Antibody (N-term) - Protocols

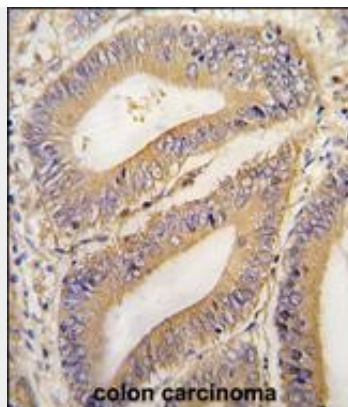
Provided below are standard protocols that you may find useful for product applications.

- [Western Blot](#)
- [Blocking Peptides](#)
- [Dot Blot](#)
- [Immunohistochemistry](#)
- [Immunofluorescence](#)
- [Immunoprecipitation](#)
- [Flow Cytometry](#)
- [Cell Culture](#)

REA (PHB2) Antibody (N-term) - Images



Western blot analysis of PHB2 (arrow) using rabbit polyclonal PHB2 Antibody (Human C-term) (Cat.#AP7270a). 293 cell lysates (2 ug/lane) either nontransfected (Lane 1) or transiently transfected with the PHB2 gene (Lane 2) (Origene Technologies).



Formalin-fixed and paraffin-embedded human colon carcinoma tissue reacted with PHB2 Antibody (N-term) (Cat.#AP7270a), which was peroxidase-conjugated to the secondary antibody, followed by DAB staining. This data demonstrates the use of this antibody for immunohistochemistry; clinical relevance has not been evaluated.

REA (PHB2) Antibody (N-term) - Background

PHB2 acts as a mediator of transcriptional repression by nuclear hormone receptors via recruitment of histone deacetylases. This protein functions as an estrogen receptor (ER)-selective coregulator that potentiates the inhibitory activities of antiestrogens and represses the activity of estrogens. It competes with NCOA1 for modulation of ER transcriptional activity. It is probably involved in regulating mitochondrial respiration activity and in aging.

REA (PHB2) Antibody (N-term) - References

Takata,H., Curr. Biol. 17 (15), 1356-1361 (2007)
Kasashima,K., J. Biol. Chem. 281 (47), 36401-36410 (2006)