

**PHB2 Antibody (Y128)**  
**Affinity Purified Rabbit Polyclonal Antibody (Pab)**  
**Catalog # AP7270d**

**Specification**

---

**PHB2 Antibody (Y128) - Product Information**

Application	IHC-P, WB,E
Primary Accession	<a href="#">Q99623</a>
Other Accession	<a href="#">Q5XIH7</a> , <a href="#">Q35129</a> , <a href="#">Q5ZMN3</a> , <a href="#">Q2HJ97</a> , <a href="#">NP_009204</a>
Reactivity	Human, Mouse
Predicted	Bovine, Chicken, Rat
Host	Rabbit
Clonality	Polyclonal
Isotype	Rabbit IgG
Calculated MW	33296
Antigen Region	106-134

**PHB2 Antibody (Y128) - Additional Information**

**Gene ID** 11331

**Other Names**

Prohibitin-2, B-cell receptor-associated protein BAP37, D-prohibitin, Repressor of estrogen receptor activity, PHB2 {ECO:0000312|EMBL:AAH147661, ECO:0000312|HGNC:HGNC:30306}

**Target/Specificity**

This PHB2 antibody is generated from rabbits immunized with a KLH conjugated synthetic peptide between 106-134 amino acids from human PHB2.

**Dilution**

IHC-P~~1:10~50

WB~~1:1000

E~~Use at an assay dependent concentration.

**Format**

Purified polyclonal antibody supplied in PBS with 0.09% (W/V) sodium azide. This antibody is purified through a protein A column, followed by peptide affinity purification.

**Storage**

Maintain refrigerated at 2-8°C for up to 2 weeks. For long term storage store at -20°C in small aliquots to prevent freeze-thaw cycles.

**Precautions**

PHB2 Antibody (Y128) is for research use only and not for use in diagnostic or therapeutic procedures.

**PHB2 Antibody (Y128) - Protein Information**

**Name** PHB2 {ECO:0000312|EMBL:AAH14766.1, ECO:0000312|HGNC:HGNC:30306}

**Function** Protein with pleiotropic attributes mediated in a cell- compartment- and tissue-specific manner, which include the plasma membrane-associated cell signaling functions, mitochondrial chaperone, and transcriptional co-regulator of transcription factors and sex steroid hormones in the nucleus.

**Cellular Location**

Mitochondrion inner membrane. Cytoplasm. Nucleus. Cell membrane Note=Localizes within both nucleus and cytoplasm in proliferative primary myoblasts and mostly within the nucleus of differentiated primary myoblasts. [Isoform 2]: Mitochondrion inner membrane

**Tissue Location**

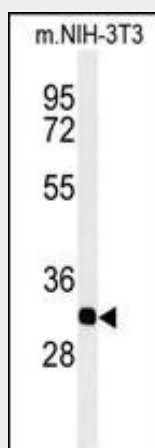
Expressed in myoblasts.

**PHB2 Antibody (Y128) - Protocols**

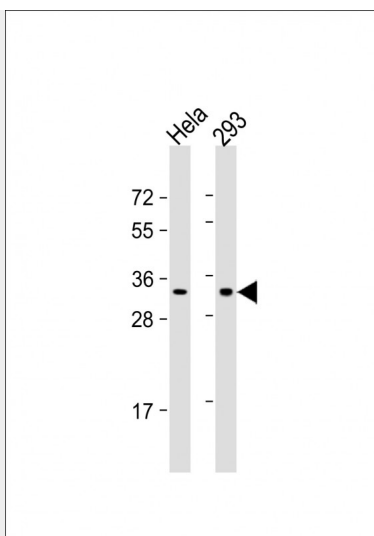
Provided below are standard protocols that you may find useful for product applications.

- [Western Blot](#)
- [Blocking Peptides](#)
- [Dot Blot](#)
- [Immunohistochemistry](#)
- [Immunofluorescence](#)
- [Immunoprecipitation](#)
- [Flow Cytometry](#)
- [Cell Culture](#)

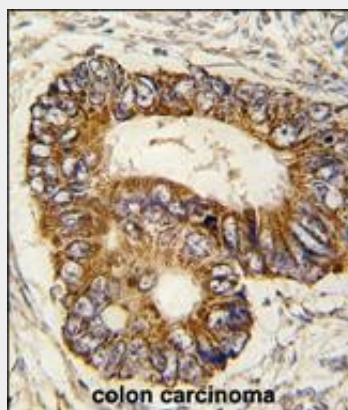
**PHB2 Antibody (Y128) - Images**



Western blot analysis of PHB2-Y128(Cat. #AP7270d) in mouse NIH-3T3 cell line lysates (35ug/lane).PHB2 (arrow) was detected using the purified Pab.



All lanes : Anti-Phospho-PHB2-Y128. ctrl at 1:1000 dilution Lane 1: HeLa whole cell lysate Lane 2: 293 whole cell lysate Lysates/proteins at 20 µg per lane. Secondary Goat Anti-Rabbit IgG, (H+L), Peroxidase conjugated at 1/10000 dilution. Predicted band size : 33 kDa Blocking/Dilution buffer: 5% NFDm/TBST.



Formalin-fixed and paraffin-embedded human colon carcinoma tissue reacted with PHB2 Antibody (Y128) (Cat.#AP7270d), which was peroxidase-conjugated to the secondary antibody, followed by DAB staining. This data demonstrates the use of this antibody for immunohistochemistry; clinical relevance has not been evaluated.

### **PHB2 Antibody (Y128) - Background**

PHB2 acts as a mediator of transcriptional repression by nuclear hormone receptors via recruitment of histone deacetylases. It functions as an estrogen receptor (ER)-selective coregulator that potentiates the inhibitory activities of antiestrogens and represses the activity of estrogens. It competes with NCOA1 for modulation of ER transcriptional activity and is probably involved in regulating mitochondrial respiration activity and in aging.

### **PHB2 Antibody (Y128) - References**

Takata,H., Curr. Biol. 17 (15), 1356-1361 (2007)  
Kasashima,K., J. Biol. Chem. 281 (47), 36401-36410 (2006)