

**NP1(Nptx1) Antibody (C-term)**  
**Purified Rabbit Polyclonal Antibody (Pab)**  
**Catalog # AP7272b****Specification**

---

**NP1(Nptx1) Antibody (C-term) - Product Information**

Application	IHC-P, WB,E
Primary Accession	<a href="#">Q15818</a>
Other Accession	<a href="#">Q62443</a> , <a href="#">P47971</a>
Reactivity	Human
Predicted	Mouse, Rat
Host	Rabbit
Clonality	Polyclonal
Isotype	Rabbit IgG
Antigen Region	364-393

**NP1(Nptx1) Antibody (C-term) - Additional Information****Gene ID** 4884**Other Names**

Neuronal pentraxin-1, NP1, 47 kDa taipoxin-binding protein, Neuronal pentraxin I, NP-I, Nptx1

**Target/Specificity**

This NP1(Nptx1) antibody is generated from rabbits immunized with a KLH conjugated synthetic peptide between 364-393 amino acids from the C-terminal region of human NP1(Nptx1).

**Dilution**

IHC-P~~1:10~50

WB~~1:1000

E~~Use at an assay dependent concentration.

**Format**

Purified polyclonal antibody supplied in PBS with 0.09% (W/V) sodium azide. This antibody is purified through a protein G column, followed by dialysis against PBS.

**Storage**

Maintain refrigerated at 2-8°C for up to 2 weeks. For long term storage store at -20°C in small aliquots to prevent freeze-thaw cycles.

**Precautions**

NP1(Nptx1) Antibody (C-term) is for research use only and not for use in diagnostic or therapeutic procedures.

**NP1(Nptx1) Antibody (C-term) - Protein Information****Name** NPTX1

**Function** May be involved in mediating uptake of synaptic material during synapse remodeling or in mediating the synaptic clustering of AMPA glutamate receptors at a subset of excitatory synapses.

**Cellular Location**

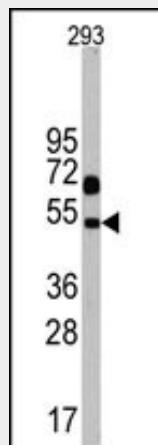
Secreted. Cytoplasmic vesicle, secretory vesicle {ECO:0000269|PubMed:34788392, ECO:0000305}. Endoplasmic reticulum {ECO:0000269|PubMed:34788392, ECO:0000305}

**NP1(Nptx1) Antibody (C-term) - Protocols**

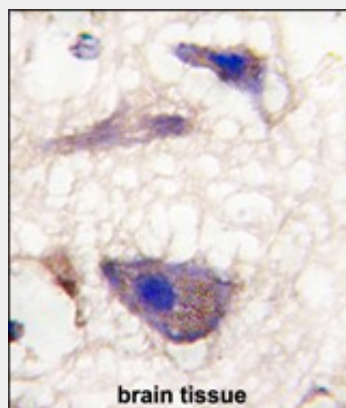
Provided below are standard protocols that you may find useful for product applications.

- [Western Blot](#)
- [Blocking Peptides](#)
- [Dot Blot](#)
- [Immunohistochemistry](#)
- [Immunofluorescence](#)
- [Immunoprecipitation](#)
- [Flow Cytometry](#)
- [Cell Culture](#)

**NP1(Nptx1) Antibody (C-term) - Images**



Western blot analysis of Nptx1 Antibody (C-term) in 293 cell line lysates (35ug/lane). Nptx1 (arrow) was detected using the purified Pab.



Formalin-fixed and paraffin-embedded human brain tissue reacted with Nptx1 Antibody (C-term),

which was peroxidase-conjugated to the secondary antibody, followed by DAB staining. This data demonstrates the use of this antibody for immunohistochemistry; clinical relevance has not been evaluated.

**NP1(Nptx1) Antibody (C-term) - Background**

NPTX1 is a member of the neuronal pentraxin gene family. Human neuronal pentraxin 1 is similar to the rat NP1 gene which encodes a binding protein for the snake venom toxin taipoxin.

**NP1(Nptx1) Antibody (C-term) - References**

Hossain,M.A., J. Neurosci. 24 (17), 4187-4196 (2004)  
Schlimgen,A.K., Neuron 14 (3), 519-526 (1995)