

**NP1(Nptx1) Antibody (Center)**  
**Purified Rabbit Polyclonal Antibody (Pab)**  
**Catalog # AP7272c****Specification**

---

**NP1(Nptx1) Antibody (Center) - Product Information**

Application	IHC-P, WB,E
Primary Accession	<a href="#">P47971</a>
Other Accession	<a href="#">Q62443</a> , <a href="#">Q15818</a>
Reactivity	Human, Rat
Predicted	Mouse
Host	Rabbit
Clonality	Polyclonal
Isotype	Rabbit IgG
Antigen Region	174-203

**NP1(Nptx1) Antibody (Center) - Additional Information****Gene ID** 266777**Other Names**

Neuronal pentraxin-1, NP1, 47 kDa taipoxin-binding protein, Neuronal pentraxin I, NP-I, Nptx1

**Target/Specificity**

This NP1(Nptx1) antibody is generated from rabbits immunized with a KLH conjugated synthetic peptide between 174-203 amino acids from the Central region of rat NP1(Nptx1).

**Dilution**

IHC-P~~1:50~100

WB~~1:1000

E~~Use at an assay dependent concentration.

**Format**

Purified polyclonal antibody supplied in PBS with 0.09% (W/V) sodium azide. This antibody is purified through a protein G column, followed by dialysis against PBS.

**Storage**

Maintain refrigerated at 2-8°C for up to 2 weeks. For long term storage store at -20°C in small aliquots to prevent freeze-thaw cycles.

**Precautions**

NP1(Nptx1) Antibody (Center) is for research use only and not for use in diagnostic or therapeutic procedures.

**NP1(Nptx1) Antibody (Center) - Protein Information****Name** Nptx1

**Function** May be involved in mediating uptake of synaptic material during synapse remodeling or in mediating the synaptic clustering of AMPA glutamate receptors at a subset of excitatory synapses.

**Cellular Location**

Secreted {ECO:0000250|UniProtKB:Q15818}. Cytoplasmic vesicle, secretory vesicle. Endoplasmic reticulum

**Tissue Location**

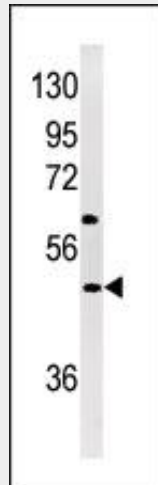
Cerebellum, hippocampus and cerebral cortex.

**NP1(Nptx1) Antibody (Center) - Protocols**

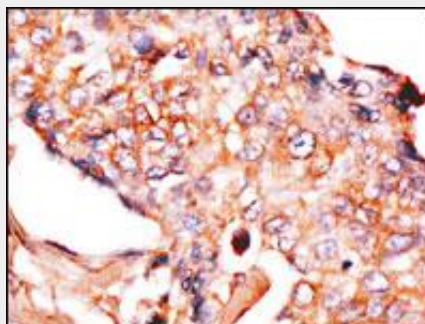
Provided below are standard protocols that you may find useful for product applications.

- [Western Blot](#)
- [Blocking Peptides](#)
- [Dot Blot](#)
- [Immunohistochemistry](#)
- [Immunofluorescence](#)
- [Immunoprecipitation](#)
- [Flow Cytometry](#)
- [Cell Culture](#)

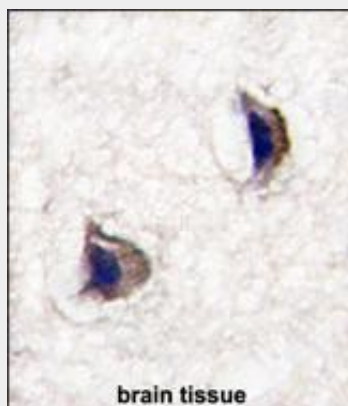
**NP1(Nptx1) Antibody (Center) - Images**



Western blot analysis of anti-NP1(Nptx1) Antibody (Center) (Cat. #AP7272c) in Jurkat cell line lysates (35ug/lane). NP1(arrow) was detected using the purified Pab.



Formalin-fixed and paraffin-embedded human breast carcinoma reacted with anti-NP1(Nptx1) Antibody (Center), which was peroxidase-conjugated to the secondary antibody, followed by DAB staining. This data demonstrates the use of this antibody for immunohistochemistry; clinical relevance has not been evaluated.



Formalin-fixed and paraffin-embedded human brain tissue reacted with NP1(Nptx1) Antibody (Center) (Cat.#AP7272c), which was peroxidase-conjugated to the secondary antibody, followed by DAB staining. This data demonstrates the use of this antibody for immunohistochemistry; clinical relevance has not been evaluated.

#### **NP1(Nptx1) Antibody (Center) - Background**

NPTX1 is a member of the neuronal pentraxin family. Human neuronal pentraxin 1 is similar to rat NP1 which is a binding protein for the snake venom toxin taipoxin.

#### **NP1(Nptx1) Antibody (Center) - References**

Hossain,M.A., J. Neurosci. 24 (17), 4187-4196 (2004)  
Schlimgen,A.K., Neuron 14 (3), 519-526 (1995)

#### **NP1(Nptx1) Antibody (Center) - Citations**

- [Neuronal pentraxin 1: A synaptic-derived plasma biomarker in Alzheimer's disease.](#)