

TBPL2 Polyclonal Antibody
Catalog # AP72746**Specification**

TBPL2 Polyclonal Antibody - Product Information

Application	WB, IHC-P
Primary Accession	Q6SJ96
Reactivity	Human
Host	Rabbit
Clonality	Polyclonal

TBPL2 Polyclonal Antibody - Additional Information**Gene ID** 387332**Other Names**

TBPL2; TBP2; TRF3; TATA box-binding protein-like protein 2; TBP-like protein 2; TATA box-binding protein-related factor 3; TBP-related factor 3

Dilution

WB~~Western Blot: 1/500 - 1/2000. Immunohistochemistry: 1/100 - 1/300. ELISA: 1/5000. Not yet tested in other applications.

IHC-P~~N/A

Format

Liquid in PBS containing 50% glycerol, 0.5% BSA and 0.09% (W/V) sodium azide.

Storage Conditions

-20°C

TBPL2 Polyclonal Antibody - Protein Information**Name** TBPL2 {ECO:0000312|EMBL:AAI17186.1, ECO:0000312|HGNC:HGNC:19841}**Function**

Transcription factor required in complex with TAF3 for the differentiation of myoblasts into myocytes. The complex replaces TFIIID at specific promoters at an early stage in the differentiation process (By similarity).

Cellular Location

Cytoplasm. Nucleus. Note=Present in the cytoplasm during cytokinesis.

Tissue Location

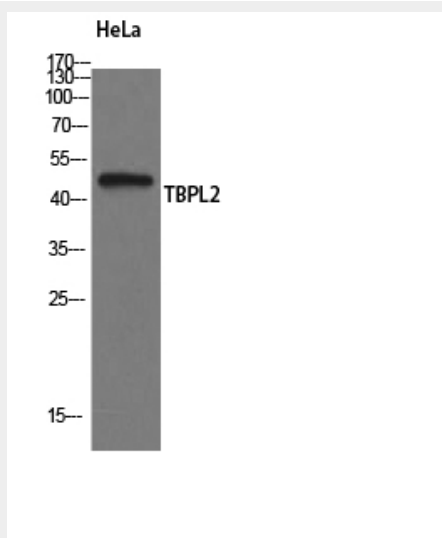
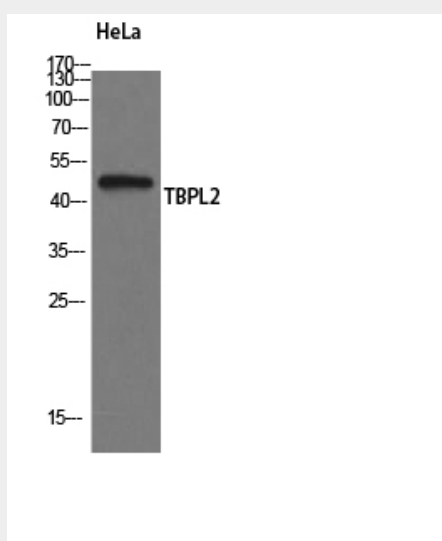
Ubiquitously expressed in all tissues examined with highest levels in heart, lung, ovary, spleen and testes

TBPL2 Polyclonal Antibody - Protocols

Provided below are standard protocols that you may find useful for product applications.

- [Western Blot](#)
- [Blocking Peptides](#)
- [Dot Blot](#)
- [Immunohistochemistry](#)
- [Immunofluorescence](#)
- [Immunoprecipitation](#)
- [Flow Cytometry](#)
- [Cell Culture](#)

TBPL2 Polyclonal Antibody - Images



TBPL2 Polyclonal Antibody - Background

Transcription factor required in complex with TAF3 for the differentiation of myoblasts into

myocytes. The complex replaces TFIID at specific promoters at an early stage in the differentiation process (By similarity).