

**TBX3 Polyclonal Antibody**  
**Catalog # AP72754****Specification**

---

**TBX3 Polyclonal Antibody - Product Information**

Application	WB
Primary Accession	<a href="#">O15119</a>
Reactivity	Human, Mouse, Rat
Host	Rabbit
Clonality	Polyclonal

**TBX3 Polyclonal Antibody - Additional Information****Gene ID** 6926**Other Names**

TBX3; T-box transcription factor TBX3; T-box protein 3

**Dilution**

WB~~Western Blot: 1/500 - 1/2000. ELISA: 1/5000. Not yet tested in other applications.

**Format**

Liquid in PBS containing 50% glycerol, 0.5% BSA and 0.09% (W/V) sodium azide.

**Storage Conditions**

-20°C

**TBX3 Polyclonal Antibody - Protein Information****Name** TBX3**Function**

Transcriptional repressor involved in developmental processes (PubMed:<a href="http://www.uniprot.org/citations/10468588" target="\_blank">10468588</a>). Binds to the palindromic T site 5'- TTCACACCTAGGTGTGAA-3' DNA sequence, or a half-site, which are present in the regulatory region of several genes (PubMed:<a href="http://www.uniprot.org/citations/12000749" target="\_blank">12000749</a>). Probably plays a role in limb pattern formation (PubMed:<a href="http://www.uniprot.org/citations/10468588" target="\_blank">10468588</a>). Required for mammary placode induction, and maintenance of the mammary buds during development (By similarity). Involved in branching morphogenesis in both developing lungs and adult mammary glands, via negative modulation of target genes; acting redundantly with TBX2 (By similarity). Required, together with TBX2, to maintain cell proliferation in the embryonic lung mesenchyme; perhaps acting downstream of SHH, BMP and TGFbeta signaling (By similarity). Involved in modulating early inner ear development, acting independently of, and also redundantly with, TBX2 in different subregions of the developing ear (By similarity). Acts as a negative regulator of PML function in cellular senescence (PubMed:<a href="http://www.uniprot.org/citations/22002537" target="\_blank">22002537</a>).

**Cellular Location**

Nucleus {ECO:0000255|PROSITE-ProRule:PRU00201}.

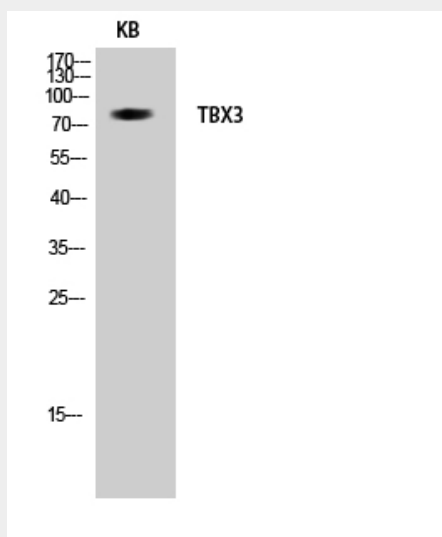
**Tissue Location**

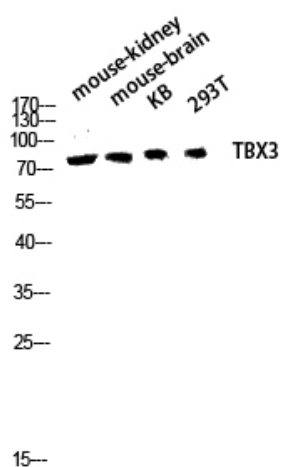
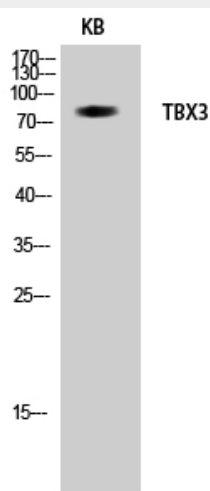
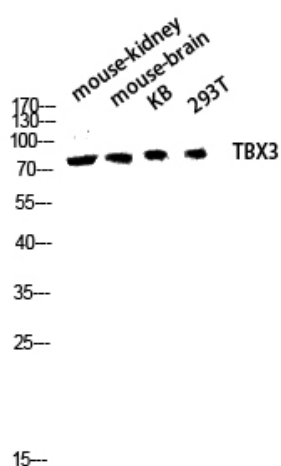
Widely expressed.

**TBX3 Polyclonal Antibody - Protocols**

Provided below are standard protocols that you may find useful for product applications.

- [Western Blot](#)
- [Blocking Peptides](#)
- [Dot Blot](#)
- [Immunohistochemistry](#)
- [Immunofluorescence](#)
- [Immunoprecipitation](#)
- [Flow Cytometry](#)
- [Cell Culture](#)

**TBX3 Polyclonal Antibody - Images**



**TBX3 Polyclonal Antibody - Background**

Transcriptional repressor involved in developmental processes. Probably plays a role in limb pattern formation. Acts as a negative regulator of PML function in cellular senescence.