

**BarX1 Antibody (C-term)**  
**Purified Rabbit Polyclonal Antibody (Pab)**  
**Catalog # AP7276b****Specification**

---

**BarX1 Antibody (C-term) - Product Information**

Application	WB,E
Primary Accession	<a href="#">O9HBU1</a>
Reactivity	Human
Host	Rabbit
Clonality	Polyclonal
Isotype	Rabbit IgG
Calculated MW	27298
Antigen Region	213-243

**BarX1 Antibody (C-term) - Additional Information****Gene ID** 56033**Other Names**

Homeobox protein BarH-like 1, BARX1

**Target/Specificity**

This BarX1 antibody is generated from rabbits immunized with a KLH conjugated synthetic peptide between 213-243 amino acids from the C-terminal region of human BarX1.

**Dilution**

WB~~1:1000

E~~Use at an assay dependent concentration.

**Format**

Purified polyclonal antibody supplied in PBS with 0.09% (W/V) sodium azide. This antibody is prepared by Saturated Ammonium Sulfate (SAS) precipitation followed by dialysis against PBS.

**Storage**

Maintain refrigerated at 2-8°C for up to 2 weeks. For long term storage store at -20°C in small aliquots to prevent freeze-thaw cycles.

**Precautions**

BarX1 Antibody (C-term) is for research use only and not for use in diagnostic or therapeutic procedures.

**BarX1 Antibody (C-term) - Protein Information****Name** BARX1

**Function** Transcription factor, which is involved in craniofacial development, in odontogenesis and in stomach organogenesis. May have a role in the differentiation of molars from incisors. Plays

a role in suppressing endodermal Wnt activity (By similarity). Binds to a regulatory module of the NCAM promoter.

**Cellular Location**

Nucleus.

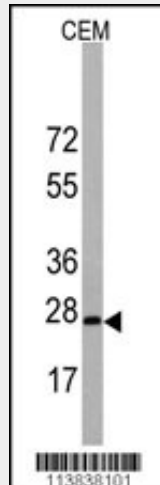
**Tissue Location**

Widely expressed. Expressed at higher levels in testis and heart. Detected in craniofacial tissue and adult iris, but not in lymphocytes, fibroblasts, choroid retina, retinal pigment epithelium, kidney, or fetal liver

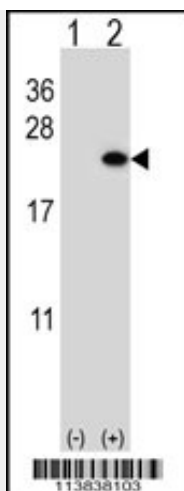
**BarX1 Antibody (C-term) - Protocols**

Provided below are standard protocols that you may find useful for product applications.

- [Western Blot](#)
- [Blocking Peptides](#)
- [Dot Blot](#)
- [Immunohistochemistry](#)
- [Immunofluorescence](#)
- [Immunoprecipitation](#)
- [Flow Cytometry](#)
- [Cell Culture](#)

**BarX1 Antibody (C-term) - Images**

Western blot analysis of BarX1 Antibody (C-term) in CEM cell line lysates (35ug/lane). BarX1 (arrow) was detected using the purified Pab.



Western blot analysis of BarX1 (arrow) using rabbit polyclonal BarX1 Antibody (C-term) (Cat. #AP7276b). 293 cell lysates (2 ug/lane) either nontransfected (Lane 1) or transiently transfected (Lane 2) with the BarX1 gene.

#### **BarX1 Antibody (C-term) - Background**

BarX1 is a member of the Bar subclass of homeobox transcription factors. Studies of the mouse and chick homolog suggest the encoded protein may play a role in developing teeth and craniofacial mesenchyme of neural crest origin. The protein may also be associated with differentiation of stomach epithelia.

#### **BarX1 Antibody (C-term) - References**

Lowry, R.B., Am. J. Med. Genet. A 143 (11), 1227-1230 (2007)  
Gould, D.B., Genomics 68 (3), 336-342 (2000)