

TDE1 Polyclonal Antibody
Catalog # AP72774**Specification****TDE1 Polyclonal Antibody - Product Information**

Application	WB, IHC-P, IF
Primary Accession	Q13530
Reactivity	Human, Mouse, Rat
Host	Rabbit
Clonality	Polyclonal

TDE1 Polyclonal Antibody - Additional Information

Gene ID 10955

Other Names

SERINC3; DIFF33; TDE1; SBBI99; Serine incorporator 3; Tumor differentially expressed protein 1

Dilution

WB~~Western Blot: 1/500 - 1/2000. Immunohistochemistry: 1/100 - 1/300. Immunofluorescence: 1/200 - 1/1000. ELISA: 1/20000. Not yet tested in other applications.

IHC-P~~N/A

IF~~1:50~200

Format

Liquid in PBS containing 50% glycerol, 0.5% BSA and 0.09% (W/V) sodium azide.

Storage Conditions

-20°C

TDE1 Polyclonal Antibody - Protein InformationName SERINC3 ([HGNC:11699](#))**Function**

Restriction factor required to restrict infectivity of lentiviruses, such as HIV-1: acts by inhibiting an early step of viral infection. Impairs the penetration of the viral particle into the cytoplasm (PubMed:26416733, PubMed:26416734). Non-ATP-dependent, non-specific lipid transporter for phosphatidylserine, phosphatidylcholine, and phosphatidylethanolamine. Functions as a scramblase that flips lipids in both directions across the membrane. Phospholipid scrambling results in HIV-1 surface exposure of phosphatidylserine and loss of membrane asymmetry, which leads to changes in HIV-1 Env conformation and loss of infectivity (PubMed:37474505).

Cellular Location

Cell membrane; Multi-pass membrane protein. Golgi apparatus membrane

{ECO:0000250|UniProtKB:Q9QZI9}; Multi-pass membrane protein
{ECO:0000250|UniProtKB:Q9QZI9}

Tissue Location

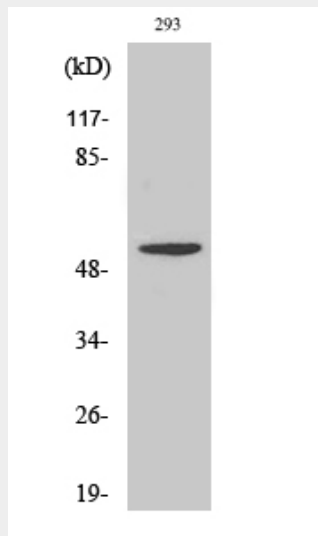
Ubiquitous. Expression levels were increased fourfold to tenfold in lung tumor tissues compared with normal pulmonary tissues.

TDE1 Polyclonal Antibody - Protocols

Provided below are standard protocols that you may find useful for product applications.

- [Western Blot](#)
- [Blocking Peptides](#)
- [Dot Blot](#)
- [Immunohistochemistry](#)
- [Immunofluorescence](#)
- [Immunoprecipitation](#)
- [Flow Cytometry](#)
- [Cell Culture](#)

TDE1 Polyclonal Antibody - Images



Western Blot analysis of various cells using TDE1 Polyclonal Antibody

TDE1 Polyclonal Antibody - Background

Restriction factor required to restrict infectivity of lentiviruses, such as HIV-1: acts by inhibiting an early step of viral infection. Impairs the penetration of the viral particle into the cytoplasm (PubMed:26416733, PubMed:26416734).