

TFDP1 Polyclonal Antibody
Catalog # AP72794**Specification**

TFDP1 Polyclonal Antibody - Product Information

Application	WB, IHC-P, IF
Primary Accession	Q14186
Reactivity	Human
Host	Rabbit
Clonality	Polyclonal

TFDP1 Polyclonal Antibody - Additional Information**Gene ID** 7027**Other Names**

TFDP1; DP1; Transcription factor Dp-1; DRTF1-polypeptide 1; DRTF1; E2F dimerization partner 1

Dilution

WB~~Western Blot: 1/500 - 1/2000. Immunohistochemistry: 1/100 - 1/300. Immunofluorescence: 1/200 - 1/1000. ELISA: 1/20000. Not yet tested in other applications.

IHC-P~~N/A

IF~~1:50~200

Format

Liquid in PBS containing 50% glycerol, 0.5% BSA and 0.09% (W/V) sodium azide.

Storage Conditions

-20°C

TFDP1 Polyclonal Antibody - Protein Information**Name** TFDP1**Synonyms** DP1**Function**

Can stimulate E2F-dependent transcription. Binds DNA cooperatively with E2F family members through the E2 recognition site, 5'-TTTC[CG]CGC-3', found in the promoter region of a number of genes whose products are involved in cell cycle regulation or in DNA replication (PubMed:7739537, PubMed:8405995). The E2F1:DP complex appears to mediate both cell proliferation and apoptosis. Blocks adipocyte differentiation by repressing CEBPA binding to its target gene promoters (PubMed:20176812).

Cellular Location

Nucleus {ECO:0000250|UniProtKB:Q08639}. Cytoplasm {ECO:0000250|UniProtKB:Q08639}.

Note=Shuttles between the cytoplasm and nucleus and translocates into the nuclear compartment upon heterodimerization with E2F1. {ECO:0000250|UniProtKB:Q08639}

Tissue Location

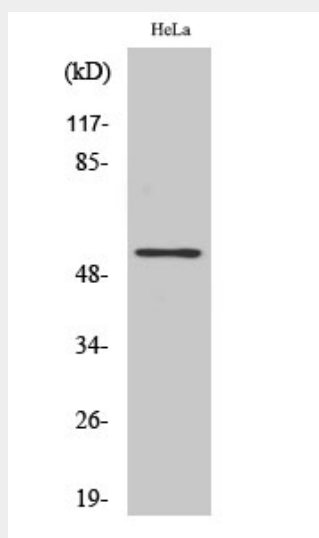
Highest levels in muscle. Also expressed in brain, placenta, liver and kidney. Lower levels in lung and pancreas. Not detected in heart

TFDP1 Polyclonal Antibody - Protocols

Provided below are standard protocols that you may find useful for product applications.

- [Western Blot](#)
- [Blocking Peptides](#)
- [Dot Blot](#)
- [Immunohistochemistry](#)
- [Immunofluorescence](#)
- [Immunoprecipitation](#)
- [Flow Cytometry](#)
- [Cell Culture](#)

TFDP1 Polyclonal Antibody - Images



TFDP1 Polyclonal Antibody - Background

Can stimulate E2F-dependent transcription. Binds DNA cooperatively with E2F family members through the E2 recognition site, 5'-TTTC[CG]CGC-3', found in the promoter region of a number of genes whose products are involved in cell cycle regulation or in DNA replication (PubMed:8405995, PubMed:7739537). The E2F1:DP complex appears to mediate both cell proliferation and apoptosis. Blocks adipocyte differentiation by repressing CEBPA binding to its target gene promoters (PubMed:20176812).