

TIRAP Polyclonal Antibody
Catalog # AP72850**Specification**

TIRAP Polyclonal Antibody - Product Information

Application	WB, IHC-P
Primary Accession	P58753
Reactivity	Human, Mouse
Host	Rabbit
Clonality	Polyclonal

TIRAP Polyclonal Antibody - Additional Information**Gene ID** 114609**Other Names**

TIRAP; MAL; Toll/interleukin-1 receptor domain-containing adapter protein; TIR domain-containing adapter protein; Adaptor protein Wyatt; MyD88 adapter-like protein

Dilution

WB~~WB 1:500-2000 Immunohistochemistry: 1/100 - 1/300. ELISA: 1/20000. Not yet tested in other applications.

IHC-P~~N/A

Format

Liquid in PBS containing 50% glycerol, 0.5% BSA and 0.09% (W/V) sodium azide.

Storage Conditions

-20°C

TIRAP Polyclonal Antibody - Protein Information**Name** TIRAP**Synonyms** MAL**Function**

Adapter involved in TLR2, TLR4 and RAGE signaling pathways in the innate immune response. Acts via IRAK2 and TRAF-6, leading to the activation of NF-kappa-B, MAPK1, MAPK3 and JNK, and resulting in cytokine secretion and the inflammatory response. Positively regulates the production of TNF-alpha (TNF) and interleukin-6 (IL6).

Cellular Location

Cytoplasm. Cell membrane. Membrane. Note=Colocalizes with DAB2IP at the plasma membrane

Tissue Location

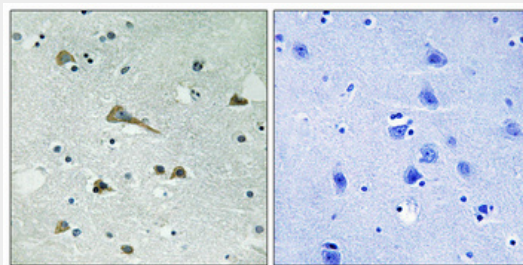
Highly expressed in liver, kidney, spleen, skeletal muscle and heart. Also detected in peripheral blood leukocytes, lung, placenta, small intestine, thymus, colon and brain

TIRAP Polyclonal Antibody - Protocols

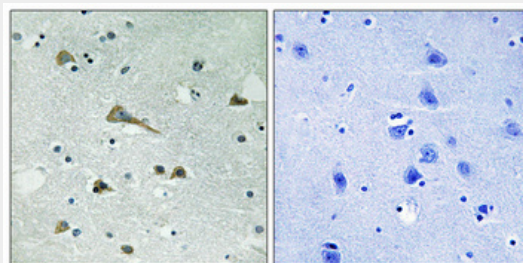
Provided below are standard protocols that you may find useful for product applications.

- [Western Blot](#)
- [Blocking Peptides](#)
- [Dot Blot](#)
- [Immunohistochemistry](#)
- [Immunofluorescence](#)
- [Immunoprecipitation](#)
- [Flow Cytometry](#)
- [Cell Culture](#)

TIRAP Polyclonal Antibody - Images



Immunohistochemical analysis of paraffin-embedded Human brain. Antibody was diluted at 1:100(4°,overnight). High-pressure and temperature Tris-EDTA,pH8.0 was used for antigen retrieval. Negative contrl (right) obtained from antibody was pre-absorbed by immunogen peptide.



Immunohistochemical analysis of paraffin-embedded Human brain. Antibody was diluted at 1:100(4°,overnight). High-pressure and temperature Tris-EDTA,pH8.0 was used for antigen retrieval. Negative contrl (right) obtained from antibody was pre-absorbed by immunogen peptide.

TIRAP Polyclonal Antibody - Background

Adapter involved in TLR2 and TLR4 signaling pathways in the innate immune response. Acts via IRAK2 and TRAF-6, leading to the activation of NF-kappa-B, MAPK1, MAPK3 and JNK, and resulting in cytokine secretion and the inflammatory response. Positively regulates the production of TNF-alpha and interleukin-6.