

**TRIM3 Polyclonal Antibody**  
**Catalog # AP72919****Specification**

---

**TRIM3 Polyclonal Antibody - Product Information**

Application	WB, IHC-P, IF
Primary Accession	<a href="#">O75382</a>
Reactivity	Human, Mouse, Rat
Host	Rabbit
Clonality	Polyclonal

**TRIM3 Polyclonal Antibody - Additional Information****Gene ID** 10612**Other Names**

TRIM3; BERP; RNF22; RNF97; Tripartite motif-containing protein 3; Brain-expressed RING finger protein; RING finger protein 22; RING finger protein 97

**Dilution**

WB~~Western Blot: 1/500 - 1/2000. Immunohistochemistry: 1/100 - 1/300. Immunofluorescence: 1/200 - 1/1000. ELISA: 1/40000. Not yet tested in other applications.

IHC-P~~N/A

IF~~1:50~200

**Format**

Liquid in PBS containing 50% glycerol, 0.5% BSA and 0.09% (W/V) sodium azide.

**Storage Conditions**

-20°C

**TRIM3 Polyclonal Antibody - Protein Information****Name** TRIM3**Synonyms** BERP, RNF22, RNF97**Function**

E3 ubiquitin ligase that plays essential roles in neuronal functions such as regulation of neuronal plasticity, learning, and memory (By similarity). In addition to its neuronal functions, participates in other biological processes such as innate immunity or cell cycle regulation. Component of the cytoskeleton-associated recycling or transport complex in neurons, polyubiquitinates gamma-actin, thus regulating neuronal plasticity, learning, and memory (By similarity). Ubiquitinates postsynaptic scaffold GKAP, a neuronal substrate involved in synaptic remodeling and thereby modulates dendritic spine morphology (By similarity). Positively regulates motility of microtubule-dependent motor protein KIF21B (By similarity). Induces growth arrest via its RING-dependent E3 ligase activity and ubiquitinates CDKN1A (PubMed:<a href="http://www.uniprot.org/citations/24393003" target="\_blank">24393003</a>). Positively

regulates TLR3- mediated signaling by mediating 'Lys-63'-linked polyubiquitination of TLR3 (PubMed:<a href="http://www.uniprot.org/citations/32878999" target="\_blank">32878999</a>). In turn, promotes the recognition and sorting of polyubiquitinated TLR3 by the ESCRT complexes (PubMed:<a href="http://www.uniprot.org/citations/32878999" target="\_blank">32878999</a>).

#### Cellular Location

Cytoplasm. Early endosome Golgi apparatus, trans-Golgi network Cell projection, dendrite {ECO:0000250|UniProtKB:Q9R1R2}. Note=Mainly located in the Golgi apparatus and transported to the early endosomes upon stimulation with dsRNA.

#### Tissue Location

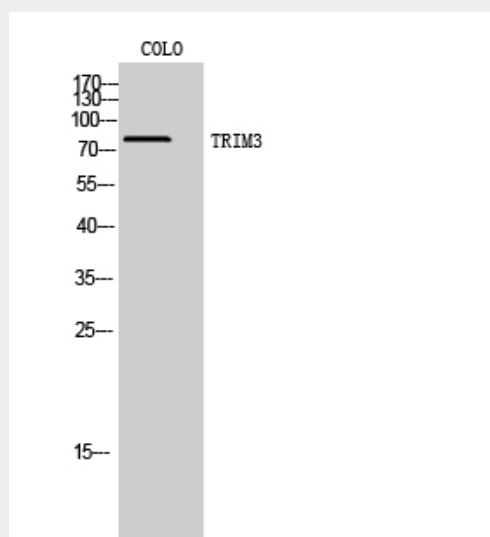
Expressed in brain, heart, uterus and testis.

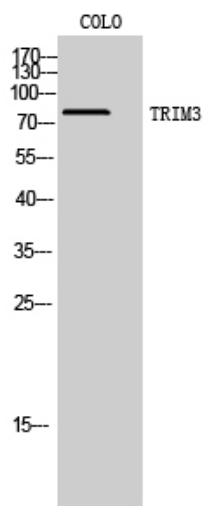
### TRIM3 Polyclonal Antibody - Protocols

Provided below are standard protocols that you may find useful for product applications.

- [Western Blot](#)
- [Blocking Peptides](#)
- [Dot Blot](#)
- [Immunohistochemistry](#)
- [Immunofluorescence](#)
- [Immunoprecipitation](#)
- [Flow Cytometry](#)
- [Cell Culture](#)

### TRIM3 Polyclonal Antibody - Images





### TRIM3 Polyclonal Antibody - Background

Probably involved in vesicular trafficking via its association with the CART complex (PubMed:15772161). The CART complex is necessary for efficient transferrin receptor recycling but not for EGFR degradation (PubMed:15772161). Positively regulates motility of microtubule-dependent motor protein KIF21B (By similarity).