

**TROP-2 Polyclonal Antibody**  
Catalog # AP72928**Specification**

---

**TROP-2 Polyclonal Antibody - Product Information**

Application	WB, IHC-P
Primary Accession	<a href="#">P09758</a>
Reactivity	Human, Mouse, Rat
Host	Rabbit
Clonality	Polyclonal

**TROP-2 Polyclonal Antibody - Additional Information****Gene ID** 4070**Other Names**

TACSTD2; GA733-1; M1S1; TROP2; Tumor-associated calcium signal transducer 2; Cell surface glycoprotein Trop-2; Membrane component chromosome 1 surface marker 1; Pancreatic carcinoma marker protein GA733-1

**Dilution**WB~~Western Blot: 1/500 - 1/2000. Immunohistochemistry: 1/100 - 1/300. ELISA: 1/20000. Not yet tested in other applications.  
IHC-P~~N/A**Format**

Liquid in PBS containing 50% glycerol, 0.5% BSA and 0.09% (W/V) sodium azide.

**Storage Conditions**

-20°C

**TROP-2 Polyclonal Antibody - Protein Information****Name** TACSTD2**Synonyms** GA733-1, M1S1, TROP2**Function**

May function as a growth factor receptor.

**Cellular Location**

Membrane; Single-pass type I membrane protein.

**Tissue Location**

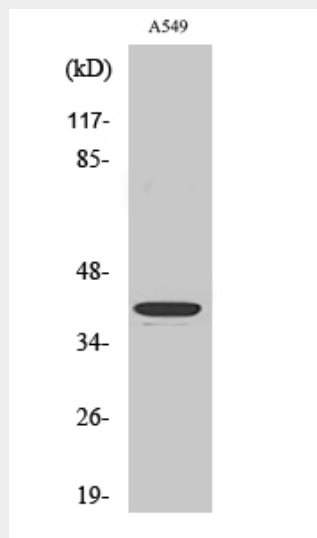
Placenta, pancreatic carcinoma cell lines.

## TROP-2 Polyclonal Antibody - Protocols

Provided below are standard protocols that you may find useful for product applications.

- [Western Blot](#)
- [Blocking Peptides](#)
- [Dot Blot](#)
- [Immunohistochemistry](#)
- [Immunofluorescence](#)
- [Immunoprecipitation](#)
- [Flow Cytometry](#)
- [Cell Culture](#)

## TROP-2 Polyclonal Antibody - Images



Western Blot analysis of various cells using TROP-2 Polyclonal Antibody. Secondary antibody was diluted at 1:20000

## TROP-2 Polyclonal Antibody - Background

May function as a growth factor receptor.