

Tropomyosin α Polyclonal Antibody
Catalog # AP72929**Specification**

Tropomyosin α Polyclonal Antibody - Product Information

Application	WB
Primary Accession	P09493
Reactivity	Human, Mouse, Rat
Host	Rabbit
Clonality	Polyclonal

Tropomyosin α Polyclonal Antibody - Additional Information**Gene ID** 7168**Other Names**

TPM1; C15orf13; TMSA; Tropomyosin alpha-1 chain; Alpha-tropomyosin; Tropomyosin-1

Dilution

WB~~Western Blot: 1/500 - 1/2000. ELISA: 1/10000. Not yet tested in other applications.

Format

Liquid in PBS containing 50% glycerol, 0.5% BSA and 0.09% (W/V) sodium azide.

Storage Conditions

-20°C

Tropomyosin α Polyclonal Antibody - Protein Information**Name** TPM1**Synonyms** C15orf13, TMSA**Function**

Binds to actin filaments in muscle and non-muscle cells (PubMed:23170982). Plays a central role, in association with the troponin complex, in the calcium dependent regulation of vertebrate striated muscle contraction (PubMed:23170982). Smooth muscle contraction is regulated by interaction with caldesmon. In non-muscle cells is implicated in stabilizing cytoskeleton actin filaments.

Cellular Location

Cytoplasm, cytoskeleton {ECO:0000250|UniProtKB:P04692}. Note=Associates with F-actin stress fibers. {ECO:0000250|UniProtKB:P04692}

Tissue Location

Detected in primary breast cancer tissues but undetectable in normal breast tissues in Sudanese

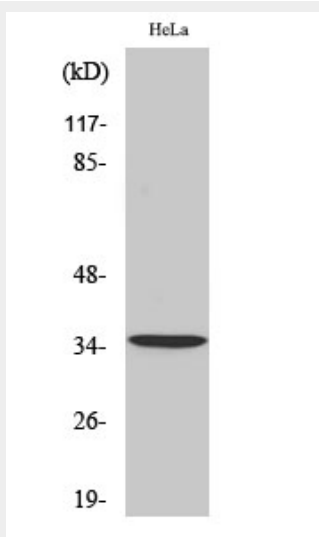
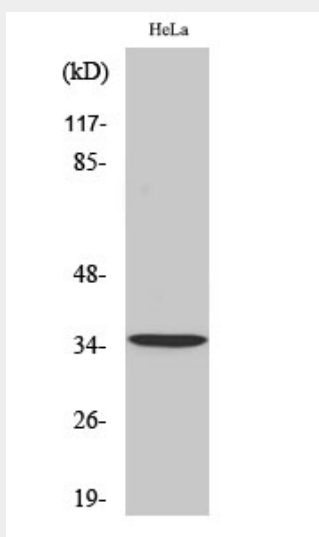
patients. Isoform 1 is expressed in adult and fetal skeletal muscle and cardiac tissues, with higher expression levels in the cardiac tissues. Isoform 10 is expressed in adult and fetal cardiac tissues, but not in skeletal muscle. {ECO:0000269|PubMed:15249230, ECO:0000269|Ref.15}

Tropomyosin α Polyclonal Antibody - Protocols

Provided below are standard protocols that you may find useful for product applications.

- [Western Blot](#)
- [Blocking Peptides](#)
- [Dot Blot](#)
- [Immunohistochemistry](#)
- [Immunofluorescence](#)
- [Immunoprecipitation](#)
- [Flow Cytometry](#)
- [Cell Culture](#)

Tropomyosin α Polyclonal Antibody - Images



Tropomyosin α Polyclonal Antibody - Background

Binds to actin filaments in muscle and non-muscle cells (PubMed:23170982). Plays a central role, in association with the troponin complex, in the calcium dependent regulation of vertebrate striated muscle contraction (PubMed:23170982). Smooth muscle contraction is regulated by interaction with caldesmon. In non-muscle cells is implicated in stabilizing cytoskeleton actin filaments.