

Trypsin-3 Polyclonal Antibody
Catalog # AP72937**Specification**

Trypsin-3 Polyclonal Antibody - Product Information

Application	WB
Primary Accession	P35030
Reactivity	Human
Host	Rabbit
Clonality	Polyclonal

Trypsin-3 Polyclonal Antibody - Additional Information**Gene ID** 5646**Other Names**

PRSS3; PRSS4; TRY3; TRY4; Trypsin-3; Brain trypsinogen; Mesotrypsinogen; Serine protease 3; Serine protease 4; Trypsin III; Trypsin IV

Dilution

WB~~Western Blot: 1/500 - 1/2000. ELISA: 1/40000. Not yet tested in other applications.

Format

Liquid in PBS containing 50% glycerol, 0.5% BSA and 0.09% (W/V) sodium azide.

Storage Conditions

-20°C

Trypsin-3 Polyclonal Antibody - Protein Information**Name** PRSS3**Synonyms** PRSS4, TRY3, TRY4**Function**

Digestive protease that cleaves proteins preferentially after an Arg residue and has proteolytic activity toward Kunitz-type trypsin inhibitors.

Cellular Location

Secreted.

Tissue Location

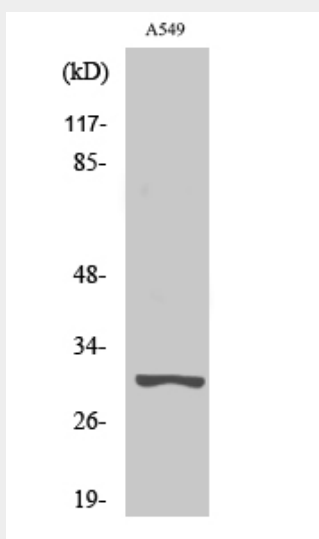
Detected in pancreas and pancreatic fluid (at protein level) (PubMed:6698368). Expressed in pancreas and brain (PubMed:8294000). Detected in ileum (PubMed:12021776)

Trypsin-3 Polyclonal Antibody - Protocols

Provided below are standard protocols that you may find useful for product applications.

- [Western Blot](#)
- [Blocking Peptides](#)
- [Dot Blot](#)
- [Immunohistochemistry](#)
- [Immunofluorescence](#)
- [Immunoprecipitation](#)
- [Flow Cytometry](#)
- [Cell Culture](#)

Trypsin-3 Polyclonal Antibody - Images



Western Blot analysis of various cells using Trypsin-3 Polyclonal Antibody. Secondary antibody was diluted at 1:20000

Trypsin-3 Polyclonal Antibody - Background

Digestive protease that cleaves proteins preferentially after an Arg residue and has proteolytic activity toward Kunitz- type trypsin inhibitors.