

TSSK 4 Polyclonal Antibody
Catalog # AP72950**Specification**

TSSK 4 Polyclonal Antibody - Product Information

Application	WB
Primary Accession	Q6SA08
Reactivity	Human, Mouse
Host	Rabbit
Clonality	Polyclonal

TSSK 4 Polyclonal Antibody - Additional Information**Gene ID** 283629**Other Names**

TSSK4; C14orf20; STK22E; TSSK5; Testis-specific serine/threonine-protein kinase 4; TSK-4; TSSK-4; Testis-specific kinase 4; Serine/threonine-protein kinase 22E

Dilution

WB~~Western Blot: 1/500 - 1/2000. ELISA: 1/10000. Not yet tested in other applications.

Format

Liquid in PBS containing 50% glycerol, 0.5% BSA and 0.09% (W/V) sodium azide.

Storage Conditions

-20°C

TSSK 4 Polyclonal Antibody - Protein Information**Name** TSSK4 ([HGNC:19825](#))**Function**

Serine/threonine kinase which is involved in male germ cell development and in mature sperm function (By similarity). May be involved in the Cre/Creb signaling pathway (By similarity). Phosphorylates CREB1 on 'Ser-133' in vitro and can stimulate Cre/Creb pathway in cells (PubMed:15964553). Phosphorylates CREM on 'Ser-116' in vitro (By similarity). Phosphorylates ODF2 on 'Ser-95' (By similarity).

Cellular Location

Cytoplasmic vesicle, secretory vesicle, acrosome {ECO:0000250|UniProtKB:Q9D411}. Cell projection, cilium, flagellum {ECO:0000250|UniProtKB:Q9D411}. Note=In spermatozoa, present in the sperm head and in the flagellum. {ECO:0000250|UniProtKB:Q9D411}

Tissue Location

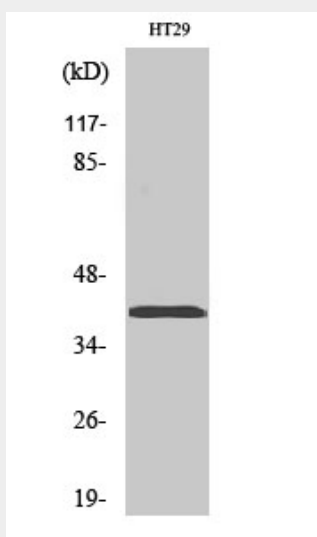
Expressed only in the testis.

TSSK 4 Polyclonal Antibody - Protocols

Provided below are standard protocols that you may find useful for product applications.

- [Western Blot](#)
- [Blocking Peptides](#)
- [Dot Blot](#)
- [Immunohistochemistry](#)
- [Immunofluorescence](#)
- [Immunoprecipitation](#)
- [Flow Cytometry](#)
- [Cell Culture](#)

TSSK 4 Polyclonal Antibody - Images



Western Blot analysis of various cells using TSSK 4 Polyclonal Antibody. Secondary antibody was diluted at 1:20000

TSSK 4 Polyclonal Antibody - Background

Serine/threonine kinase which is involved in male germ cell development and in mature sperm function (By similarity). May be involved in the Cre/Creb signaling pathway (By similarity). Phosphorylates CREB1 on 'Ser-133' in vitro and can stimulate Cre/Creb pathway in cells (PubMed:15964553). Phosphorylates CREM on 'Ser-116' in vitro (By similarity). Phosphorylates ODF2 on 'Ser-95' (By similarity).