

**T-type Ca++ CP  $\alpha$ 1H Polyclonal Antibody**  
**Catalog # AP72956****Specification****T-type Ca++ CP  $\alpha$ 1H Polyclonal Antibody - Product Information**

Application	WB
Primary Accession	<a href="#">O95180</a>
Reactivity	Human, Mouse, Rat
Host	Rabbit
Clonality	Polyclonal

**T-type Ca++ CP  $\alpha$ 1H Polyclonal Antibody - Additional Information****Gene ID** 8912**Other Names**

CACNA1H; Voltage-dependent T-type calcium channel subunit alpha-1H; Low-voltage-activated calcium channel alpha1 3.2 subunit; Voltage-gated calcium channel subunit alpha Cav3.2

**Dilution**

WB~~Western Blot: 1/500 - 1/2000. ELISA: 1/10000. Not yet tested in other applications.

**Format**

Liquid in PBS containing 50% glycerol, 0.5% BSA and 0.09% (W/V) sodium azide.

**Storage Conditions**

-20°C

**T-type Ca++ CP  $\alpha$ 1H Polyclonal Antibody - Protein Information****Name** CACNA1H ([HGNC:1395](#))**Function**

Voltage-sensitive calcium channel that gives rise to T-type calcium currents. T-type calcium channels belong to the 'low-voltage activated (LVA)' group. A particularity of this type of channel is an opening at quite negative potentials, and a voltage-dependent inactivation (PubMed:<a href="http://www.uniprot.org/citations/27149520" target="\_blank">27149520</a>, PubMed:<a href="http://www.uniprot.org/citations/9670923" target="\_blank">9670923</a>, PubMed:<a href="http://www.uniprot.org/citations/9930755" target="\_blank">9930755</a>). T-type channels serve pacemaking functions in both central neurons and cardiac nodal cells and support calcium signaling in secretory cells and vascular smooth muscle (Probable). They may also be involved in the modulation of firing patterns of neurons (PubMed:<a href="http://www.uniprot.org/citations/15048902" target="\_blank">15048902</a>). In the adrenal zona glomerulosa, participates in the signaling pathway leading to aldosterone production in response to either AGT/angiotensin II, or hyperkalemia (PubMed:<a href="http://www.uniprot.org/citations/25907736" target="\_blank">25907736</a>, PubMed:<a href="http://www.uniprot.org/citations/27729216" target="\_blank">27729216</a>).

**Cellular Location**

Cell membrane; Multi-pass membrane protein. Note=Interaction with STAC increases expression at the cell membrane.

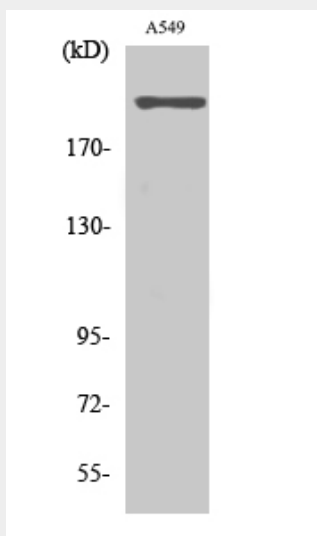
**Tissue Location**

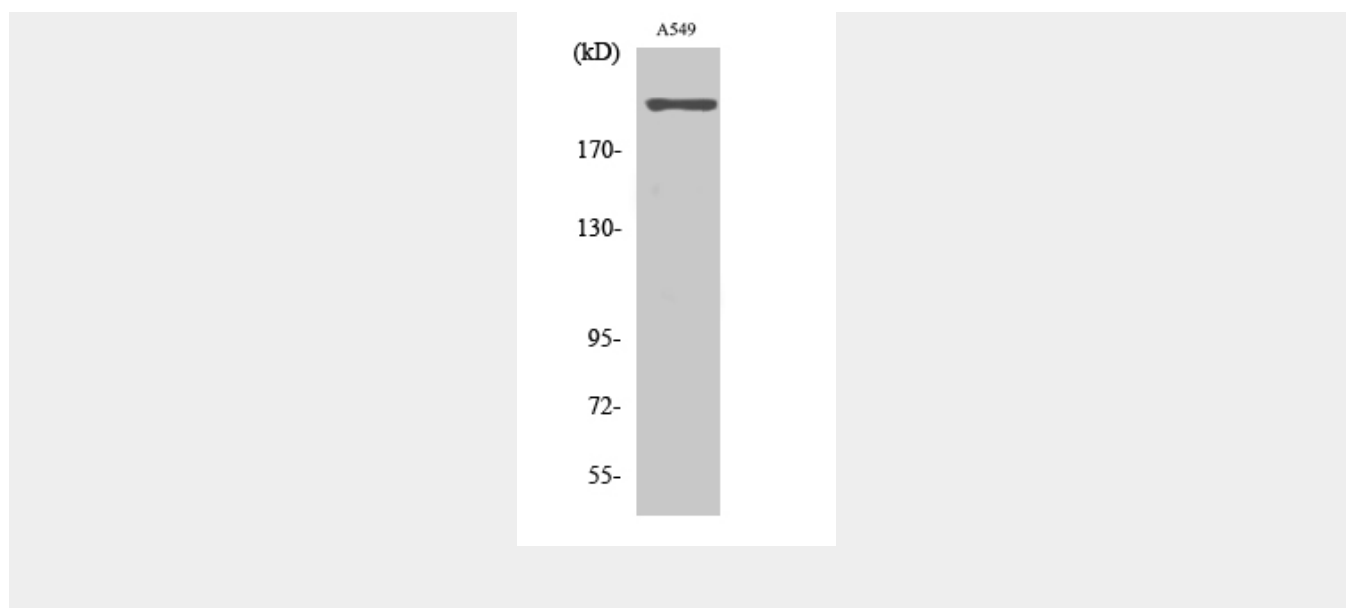
Expressed in the adrenal glomerulosa (at protein level) (PubMed:25907736, PubMed:27729216). In nonneuronal tissues, the highest expression levels are found in the kidney, liver, and heart. In the brain, most abundant in the amygdala, caudate nucleus, and putamen (PubMed:9670923, PubMed:9930755). In the heart, expressed in blood vessels. [Isoform 2]: Expressed in testis, primarily in the germ cells, but not in other portions of the reproductive tract, such as ductus deferens (PubMed:11751928). Not expressed in the brain (PubMed:11751928).

**T-type Ca<sup>++</sup> CP  $\alpha$ 1H Polyclonal Antibody - Protocols**

Provided below are standard protocols that you may find useful for product applications.

- [Western Blot](#)
- [Blocking Peptides](#)
- [Dot Blot](#)
- [Immunohistochemistry](#)
- [Immunofluorescence](#)
- [Immunoprecipitation](#)
- [Flow Cytometry](#)
- [Cell Culture](#)

**T-type Ca<sup>++</sup> CP  $\alpha$ 1H Polyclonal Antibody - Images**



#### **T-type Ca++ CP α1H Polyclonal Antibody - Background**

Voltage-sensitive calcium channel that gives rise to T- type calcium currents. T-type calcium channels belong to the "low- voltage activated (LVA)" group. A particularity of this type of channel is an opening at quite negative potentials, and a voltage- dependent inactivation (PubMed:9670923, PubMed:9930755, PubMed:27149520). T-type channels serve pacemaking functions in both central neurons and cardiac nodal cells and support calcium signaling in secretory cells and vascular smooth muscle (Probable). They may also be involved in the modulation of firing patterns of neurons (PubMed:15048902). In the adrenal zona glomerulosa, participates in the signaling pathway leading to aldosterone production in response to either AGT/angiotensin II, or hyperkalemia (PubMed:25907736, PubMed:27729216).