

**LAP3 Antibody (N-term)**  
**Purified Rabbit Polyclonal Antibody (Pab)**  
**Catalog # AP7296a**

**Specification**

---

**LAP3 Antibody (N-term) - Product Information**

Application	IHC-P, WB,E
Primary Accession	<a href="#">P28838</a>
Reactivity	Human
Host	Rabbit
Clonality	Polyclonal
Isotype	Rabbit IgG
Antigen Region	89-119

**LAP3 Antibody (N-term) - Additional Information**

**Gene ID** 51056

**Other Names**

Cytosol aminopeptidase, Leucine aminopeptidase 3, LAP-3, Leucyl aminopeptidase, Peptidase S, Proline aminopeptidase, Prolyl aminopeptidase, LAP3, LAPEP, PEPS

**Target/Specificity**

This LAP3 antibody is generated from rabbits immunized with a KLH conjugated synthetic peptide between 89-119 amino acids from the N-terminal region of human LAP3.

**Dilution**

IHC-P~~1:10~50

WB~~1:1000

E~~Use at an assay dependent concentration.

**Format**

Purified polyclonal antibody supplied in PBS with 0.09% (W/V) sodium azide. This antibody is prepared by Saturated Ammonium Sulfate (SAS) precipitation followed by dialysis against PBS.

**Storage**

Maintain refrigerated at 2-8°C for up to 2 weeks. For long term storage store at -20°C in small aliquots to prevent freeze-thaw cycles.

**Precautions**

LAP3 Antibody (N-term) is for research use only and not for use in diagnostic or therapeutic procedures.

**LAP3 Antibody (N-term) - Protein Information**

**Name** LAP3 ([HGNC:18449](#))

**Function** Cytosolic metallopeptidase that catalyzes the removal of unsubstituted N-terminal

hydrophobic amino acids from various peptides. The presence of  $Zn(2+)$  ions is essential for the peptidase activity, and the association with other cofactors can modulate the substrate specificity of the enzyme. For instance, in the presence of  $Mn(2+)$ , it displays a specific Cys-Gly hydrolyzing activity of Cys-Gly-S- conjugates. Involved in the metabolism of glutathione and in the degradation of glutathione S-conjugates, which may play a role in the control of the cell redox status.

#### Cellular Location

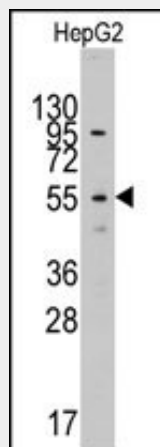
Cytoplasm {ECO:0000250|UniProtKB:Q68FS4}.

#### LAP3 Antibody (N-term) - Protocols

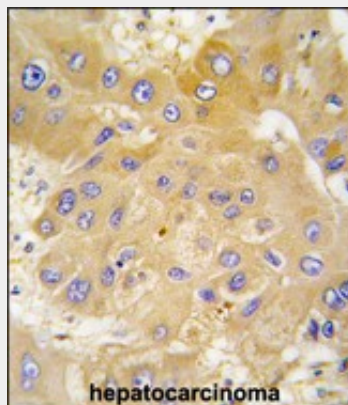
Provided below are standard protocols that you may find useful for product applications.

- [Western Blot](#)
- [Blocking Peptides](#)
- [Dot Blot](#)
- [Immunohistochemistry](#)
- [Immunofluorescence](#)
- [Immunoprecipitation](#)
- [Flow Cytometry](#)
- [Cell Culture](#)

#### LAP3 Antibody (N-term) - Images



Western blot analysis of anti-LAP3(N-term) Pab (Cat.#AP7296a) in HepG2 cell line lysates (35ug/lane). LAP3(arrow) was detected using the purified Pab.



Formalin-fixed and paraffin-embedded human hepatocarcinoma tissue reacted with LAP3 antibody (N-term) (Cat.#AP7296a), which was peroxidase-conjugated to the secondary antibody, followed by DAB staining. This data demonstrates the use of this antibody for immunohistochemistry; clinical relevance has not been evaluated.

#### **LAP3 Antibody (N-term) - Background**

LAP3 is presumably involved in the processing and regular turnover of intracellular proteins. It catalyzes the removal of unsubstituted N-terminal amino acids from various peptides. Release of an N-terminal amino acid, Xaa-I-Yaa-, in which Xaa is preferably Leu, but may be other amino acids including Pro although not Arg or Lys, and Yaa may be Pro.

#### **LAP3 Antibody (N-term) - References**

Goto,Y.,FEBS Lett. 580 (7), 1833-1838 (2006)

Matsushima,M.,Biochem. Biophys. Res. Commun. 178 (3), 1459-1464 (1991)

#### **LAP3 Antibody (N-term) - Citations**

- [LAP3 promotes glioma progression by regulating proliferation, migration and invasion of glioma cells.](#)