

TWIK-3 Polyclonal Antibody
Catalog # AP72971**Specification**

TWIK-3 Polyclonal Antibody - Product Information

Application	WB
Primary Accession	Q9Y2U2
Reactivity	Human
Host	Rabbit
Clonality	Polyclonal

TWIK-3 Polyclonal Antibody - Additional Information**Gene ID** 10089**Other Names**

KCNK7; Potassium channel subfamily K member 7

Dilution

WB~~Western Blot: 1/500 - 1/2000. ELISA: 1/40000. Not yet tested in other applications.

Format

Liquid in PBS containing 50% glycerol, 0.5% BSA and 0.09% (W/V) sodium azide.

Storage Conditions

-20°C

TWIK-3 Polyclonal Antibody - Protein Information**Name** KCNK7**Function**

Probable potassium channel subunit. No channel activity observed in vitro as protein remains in the endoplasmic reticulum. May need to associate with an as yet unknown partner in order to reach the plasma membrane.

Cellular Location

Membrane; Multi-pass membrane protein

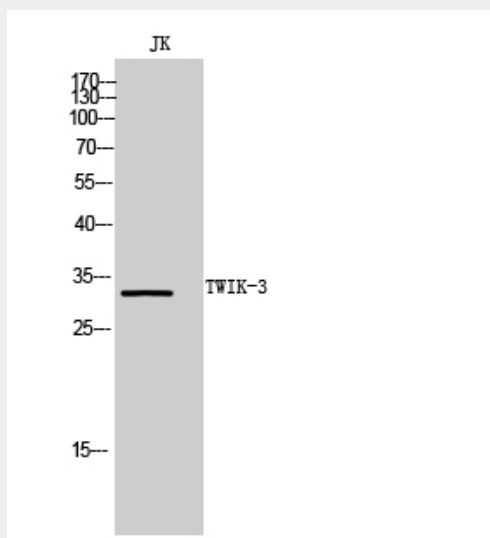
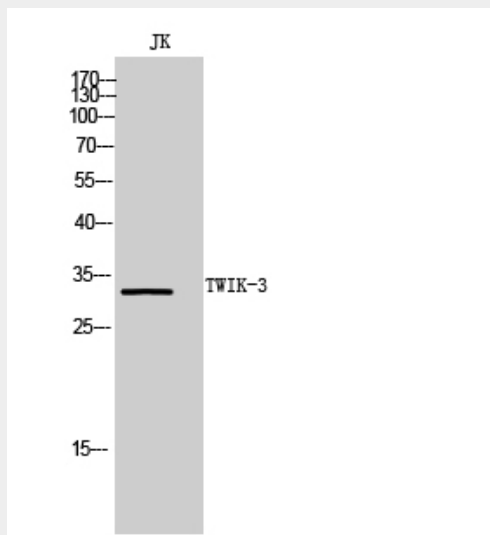
TWIK-3 Polyclonal Antibody - Protocols

Provided below are standard protocols that you may find useful for product applications.

- [Western Blot](#)
- [Blocking Peptides](#)
- [Dot Blot](#)

- [Immunohistochemistry](#)
- [Immunofluorescence](#)
- [Immunoprecipitation](#)
- [Flow Cytometry](#)
- [Cell Culture](#)

TWIK-3 Polyclonal Antibody - Images



TWIK-3 Polyclonal Antibody - Background

Probable potassium channel subunit. No channel activity observed in vitro as protein remains in the endoplasmic reticulum. May need to associate with an as yet unknown partner in order to reach the plasma membrane.