

**TYR Polyclonal Antibody**  
**Catalog # AP72975****Specification**

---

**TYR Polyclonal Antibody - Product Information**

Application	WB
Primary Accession	<a href="#">P14679</a>
Reactivity	Human, Monkey
Host	Rabbit
Clonality	Polyclonal

**TYR Polyclonal Antibody - Additional Information****Gene ID** 7299**Other Names**

TYR; Tyrosinase; LB24-AB; Monophenol monooxygenase; SK29-AB; Tumor rejection antigen AB

**Dilution**

WB~~Western Blot: 1/500 - 1/2000. ELISA: 1/10000. Not yet tested in other applications.

**Format**

Liquid in PBS containing 50% glycerol, 0.5% BSA and 0.09% (W/V) sodium azide.

**Storage Conditions**

-20°C

**TYR Polyclonal Antibody - Protein Information****Name** TYR ([HGNC:12442](#))**Function**

This is a copper-containing oxidase that functions in the formation of pigments such as melanins and other polyphenolic compounds. Catalyzes the initial and rate limiting step in the cascade of reactions leading to melanin production from tyrosine (By similarity). In addition to hydroxylating tyrosine to DOPA (3,4- dihydroxyphenylalanine), also catalyzes the oxidation of DOPA to DOPA-quinone, and possibly the oxidation of DHI (5,6-dihydroxyindole) to indole-5,6 quinone (PubMed:<a href="http://www.uniprot.org/citations/28661582" target="\_blank">28661582</a>).

**Cellular Location**

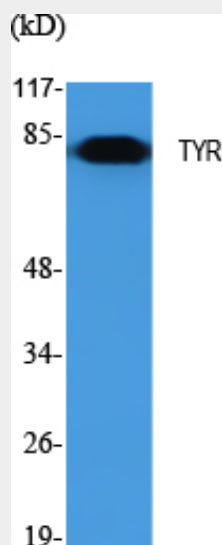
Melanosome membrane; Single-pass type I membrane protein. Melanosome {ECO:0000250|UniProtKB:P11344}. Note=Proper trafficking to melanosome is regulated by SGSM2, ANKRD27, RAB9A, RAB32 and RAB38 {ECO:0000250|UniProtKB:P11344}

**TYR Polyclonal Antibody - Protocols**

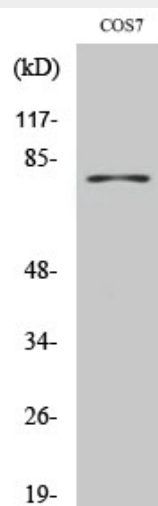
Provided below are standard protocols that you may find useful for product applications.

- [Western Blot](#)
- [Blocking Peptides](#)
- [Dot Blot](#)
- [Immunohistochemistry](#)
- [Immunofluorescence](#)
- [Immunoprecipitation](#)
- [Flow Cytometry](#)
- [Cell Culture](#)

#### **TYR Polyclonal Antibody - Images**



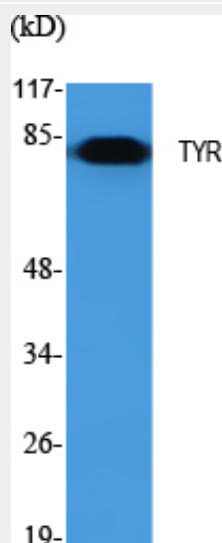
Western Blot analysis of various cells using TYR Polyclonal Antibody. Secondary antibody was diluted at 1:20000



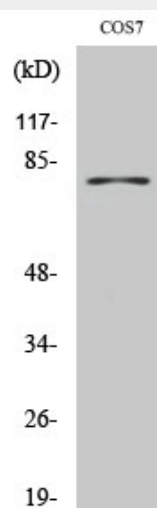
Western Blot analysis of COS7 cells using TYR Polyclonal Antibody. Secondary antibody was diluted at 1:20000

Image not found : 202004/c0382wb2016-6-3.jpg

Western blot analysis of various cell Lysate, antibody was diluted at 1:1000. Secondary antibody was diluted at 1:20000



Western Blot analysis of various cells using TYR Polyclonal Antibody. Secondary antibody was diluted at 1:20000



Western Blot analysis of COS7 cells using TYR Polyclonal Antibody. Secondary antibody was diluted at 1:20000

Image not found : 202004/c0382wb2016-6-3.jpg

Western blot analysis of various cell Lysate, antibody was diluted at 1:1000. Secondary antibody was diluted at 1:20000

### **TYR Polyclonal Antibody - Background**

This is a copper-containing oxidase that functions in the formation of pigments such as melanins and other polyphenolic compounds. Catalyzes the initial and rate limiting step in the cascade of reactions leading to melanin production from tyrosine. In addition to hydroxylating tyrosine to DOPA (3,4- dihydroxyphenylalanine), also catalyzes the oxidation of DOPA to DOPA-quinone, and possibly the oxidation of DHI (5,6- dihydroxyindole) to indole-5,6 quinone.