

UBE1L Polyclonal Antibody
Catalog # AP72980**Specification****UBE1L Polyclonal Antibody - Product Information**

Application	WB, IHC-P
Primary Accession	P41226
Reactivity	Human
Host	Rabbit
Clonality	Polyclonal

UBE1L Polyclonal Antibody - Additional Information**Gene ID** 7318**Other Names**

UBA7; UBE1L; UBE2; Ubiquitin-like modifier-activating enzyme 7; Ubiquitin-activating enzyme 7; D8; Ubiquitin-activating enzyme E1 homolog

Dilution

WB~~Western Blot: 1/500 - 1/2000. Immunohistochemistry: 1/100 - 1/300. ELISA: 1/10000. Not yet tested in other applications.

IHC-P~~N/A

Format

Liquid in PBS containing 50% glycerol, 0.5% BSA and 0.09% (W/V) sodium azide.

Storage Conditions

-20°C

UBE1L Polyclonal Antibody - Protein Information**Name** UBA7 {ECO:0000303|PubMed:28397838, ECO:0000312|HGNC:HGNC:12471}**Function**

E1-activating enzyme that catalyzes the covalent conjugation of the ubiquitin-like protein product of ISG15 to additional interferon stimulated proteins (ISGs) as well as other cellular proteins such as P53 in a process termed protein ISGylation (PubMed:27545325). Plays an essential role in antiviral immunity together with ISG15 by restricting the replication of many viruses including rabies virus, influenza virus, sindbis virus, rotavirus or human cytomegalovirus (PubMed:16254333, PubMed:19073728, PubMed:29056542, PubMed:29743376, PubMed:37722521). For example, ISG15 modification of influenza A protein NS1 disrupts the association of the NS1 with importin- α leading to NS1 nuclear import inhibition (PubMed:20133869). ISGylation of human cytomegalovirus protein UL26 regulates its stability and inhibits its activities to suppress NF-kappa-B signaling (PubMed:27564865).

Cellular Location

Cytoplasm. Nucleus

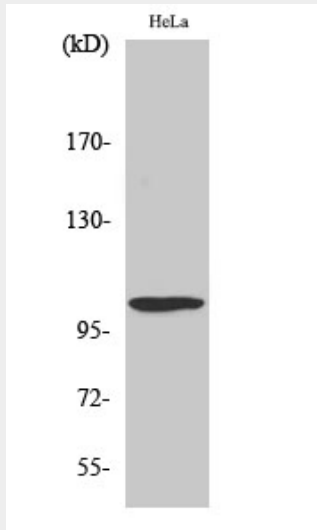
Tissue Location

Expressed in a variety of normal and tumor cell types, but is reduced in lung cancer cell lines

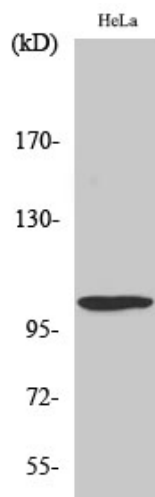
UBE1L Polyclonal Antibody - Protocols

Provided below are standard protocols that you may find useful for product applications.

- [Western Blot](#)
- [Blocking Peptides](#)
- [Dot Blot](#)
- [Immunohistochemistry](#)
- [Immunofluorescence](#)
- [Immunoprecipitation](#)
- [Flow Cytometry](#)
- [Cell Culture](#)

UBE1L Polyclonal Antibody - Images

Western Blot analysis of various cells using UBE1L Polyclonal Antibody diluted at 1:2000. Secondary antibody was diluted at 1:20000



Western Blot analysis of various cells using UBE1L Polyclonal Antibody diluted at 1:2000. Secondary antibody was diluted at 1:20000

UBE1L Polyclonal Antibody - Background

Activates ubiquitin by first adenylating with ATP its C- terminal glycine residue and thereafter linking this residue to the side chain of a cysteine residue in E1, yielding a ubiquitin- E1 thioester and free AMP. Catalyzes the ISGylation of influenza A virus NS1 protein.