

**VE-Cadherin Polyclonal Antibody**  
**Catalog # AP73052****Specification**

---

**VE-Cadherin Polyclonal Antibody - Product Information**

Application	WB
Primary Accession	<a href="#">P33151</a>
Reactivity	Human, Mouse
Host	Rabbit
Clonality	Polyclonal

**VE-Cadherin Polyclonal Antibody - Additional Information****Gene ID** 1003**Other Names**

CDH5; Cadherin-5; 7B4 antigen; Vascular endothelial cadherin; VE-cadherin; CD antigen CD144

**Dilution**

WB~~Western Blot: 1/500 - 1/2000. Immunohistochemistry: 1/100 - 1/300. ELISA: 1/40000. Not yet tested in other applications.

**Format**

Liquid in PBS containing 50% glycerol, 0.5% BSA and 0.09% (W/V) sodium azide.

**Storage Conditions**

-20°C

**VE-Cadherin Polyclonal Antibody - Protein Information****Name** CDH5**Function**

Cadherins are calcium-dependent cell adhesion proteins (By similarity). They preferentially interact with themselves in a homophilic manner in connecting cells; cadherins may thus contribute to the sorting of heterogeneous cell types (PubMed:<a href="http://www.uniprot.org/citations/21269602" target="\_blank">21269602</a>). This cadherin may play a important role in endothelial cell biology through control of the cohesion and organization of the intercellular junctions (By similarity). It associates with alpha-catenin forming a link to the cytoskeleton (PubMed:<a href="http://www.uniprot.org/citations/10861224" target="\_blank">10861224</a>). Acts in concert with KRIT1 and PALS1 to establish and maintain correct endothelial cell polarity and vascular lumen (By similarity). These effects are mediated by recruitment and activation of the Par polarity complex and RAP1B (PubMed:<a href="http://www.uniprot.org/citations/20332120" target="\_blank">20332120</a>). Required for activation of PRKCZ and for the localization of phosphorylated PRKCZ, PARD3, TIAM1 and RAP1B to the cell junction (PubMed:<a href="http://www.uniprot.org/citations/20332120" target="\_blank">20332120</a>).

**Cellular Location**

Cell junction. Cell membrane; Single-pass type I membrane protein. Note=Found at cell-cell boundaries and probably at cell-matrix boundaries. KRIT1 and CDH5 reciprocally regulate their localization to endothelial cell-cell junctions.

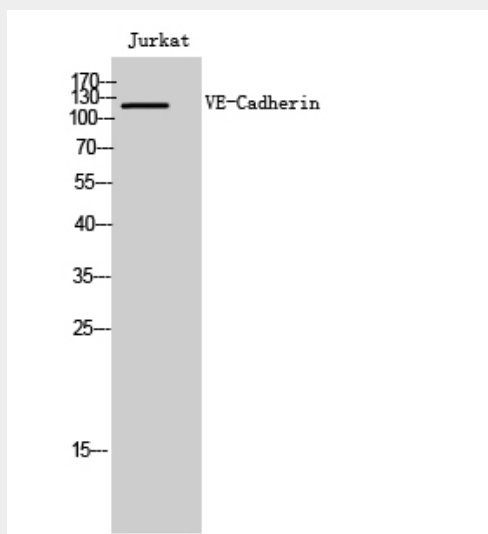
**Tissue Location**

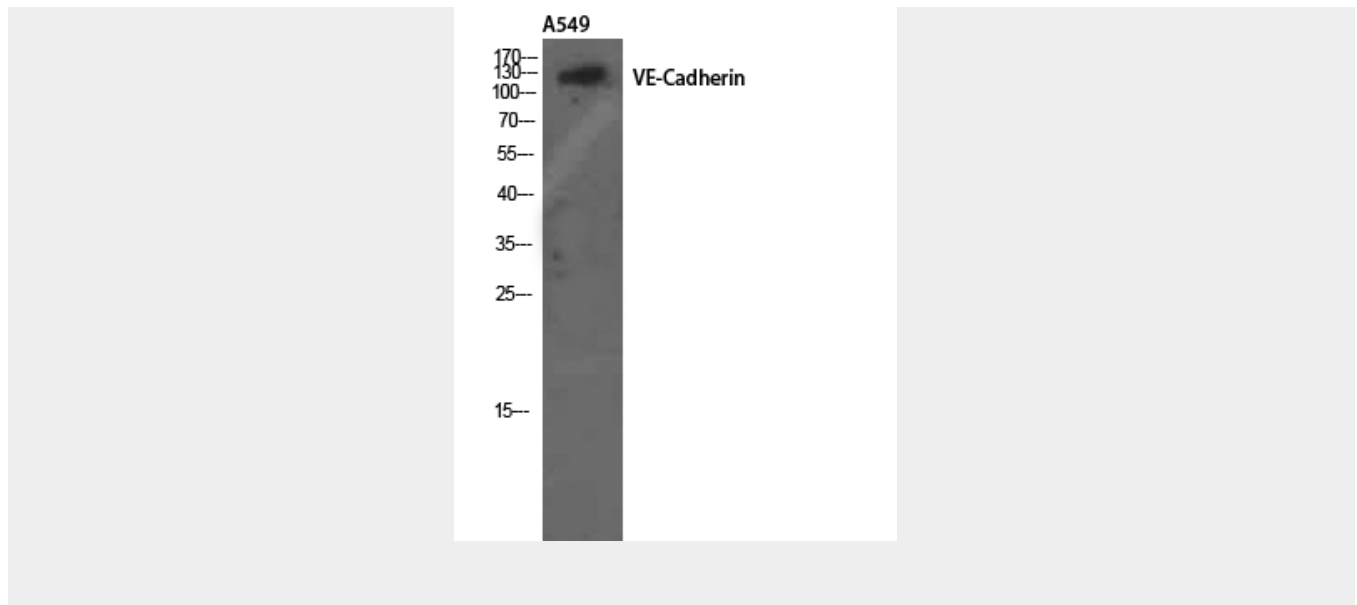
Endothelial tissues and brain.

**VE-Cadherin Polyclonal Antibody - Protocols**

Provided below are standard protocols that you may find useful for product applications.

- [Western Blot](#)
- [Blocking Peptides](#)
- [Dot Blot](#)
- [Immunohistochemistry](#)
- [Immunofluorescence](#)
- [Immunoprecipitation](#)
- [Flow Cytometry](#)
- [Cell Culture](#)

**VE-Cadherin Polyclonal Antibody - Images**



### **VE-Cadherin Polyclonal Antibody - Background**

Cadherins are calcium-dependent cell adhesion proteins. They preferentially interact with themselves in a homophilic manner in connecting cells; cadherins may thus contribute to the sorting of heterogeneous cell types. This cadherin may play an important role in endothelial cell biology through control of the cohesion and organization of the intercellular junctions. It associates with alpha-catenin forming a link to the cytoskeleton. Acts in concert with KRIT1 to establish and maintain correct endothelial cell polarity and vascular lumen. These effects are mediated by recruitment and activation of the Par polarity complex and RAP1B. Required for activation of PRKCZ and for the localization of phosphorylated PRKCZ, PARD3, TIAM1 and RAP1B to the cell junction.