

Vinculin Polyclonal Antibody
Catalog # AP73065**Specification**

Vinculin Polyclonal Antibody - Product Information

Application	WB, IHC-P, IF
Primary Accession	P18206
Reactivity	Human, Mouse, Rat
Host	Rabbit
Clonality	Polyclonal

Vinculin Polyclonal Antibody - Additional Information**Gene ID** 7414**Other Names**

VCL; Vinculin; Metavinculin

Dilution

WB~~Western Blot: 1/500 - 1/2000. Immunohistochemistry: 1/100 - 1/300. Immunofluorescence: 1/200 - 1/1000. ELISA: 1/10000. Not yet tested in other applications.

IHC-P~~N/A

IF~~1:50~200

Format

Liquid in PBS containing 50% glycerol, 0.5% BSA and 0.09% (W/V) sodium azide.

Storage Conditions

-20°C

Vinculin Polyclonal Antibody - Protein Information**Name** VCL**Function**

Actin filament (F-actin)-binding protein involved in cell- matrix adhesion and cell-cell adhesion. Regulates cell-surface E- cadherin expression and potentiates mechanosensing by the E-cadherin complex. May also play important roles in cell morphology and locomotion.

Cellular Location

Cell membrane {ECO:0000250|UniProtKB:P12003}; Peripheral membrane protein {ECO:0000250|UniProtKB:P12003}; Cytoplasmic side {ECO:0000250|UniProtKB:P12003}. Cell junction, adherens junction {ECO:0000250|UniProtKB:P12003}. Cell junction, focal adhesion {ECO:0000250|UniProtKB:P12003}. Cytoplasm, cytoskeleton {ECO:0000250|UniProtKB:P85972}. Cell membrane, sarcolemma {ECO:0000250|UniProtKB:Q64727}; Peripheral membrane protein {ECO:0000250|UniProtKB:Q64727}; Cytoplasmic side {ECO:0000250|UniProtKB:Q64727}. Cell projection, podosome {ECO:0000250|UniProtKB:Q64727}. Note=Recruitment to cell-cell junctions occurs in a myosin II-dependent manner. Interaction with CTNNA1 is necessary for its localization

to the cell-cell junctions {ECO:0000250|UniProtKB:P12003}

Tissue Location

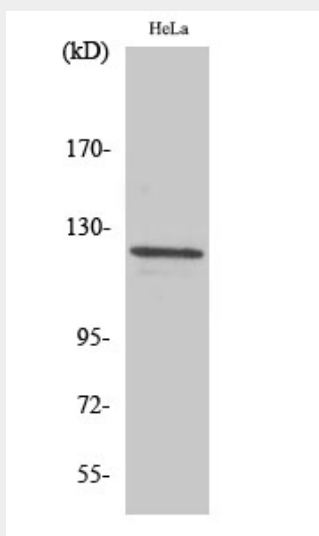
Metavinculin is muscle-specific.

Vinculin Polyclonal Antibody - Protocols

Provided below are standard protocols that you may find useful for product applications.

- [Western Blot](#)
- [Blocking Peptides](#)
- [Dot Blot](#)
- [Immunohistochemistry](#)
- [Immunofluorescence](#)
- [Immunoprecipitation](#)
- [Flow Cytometry](#)
- [Cell Culture](#)

Vinculin Polyclonal Antibody - Images



Western Blot analysis of various cells using Vinculin Polyclonal Antibody. Secondary antibody was diluted at 1:20000

Vinculin Polyclonal Antibody - Background

Actin filament (F-actin)-binding protein involved in cell-matrix adhesion and cell-cell adhesion. Regulates cell- surface E-cadherin expression and potentiates mechanosensing by the E-cadherin complex. May also play important roles in cell morphology and locomotion.

Vinculin Polyclonal Antibody - Citations

- [Sustained adenosine exposure causes endothelial mitochondrial dysfunction via equilibrative nucleoside transporters](#)