

CA14 Antibody (N-term)
Purified Rabbit Polyclonal Antibody (Pab)
Catalog # AP7306a**Specification**

CA14 Antibody (N-term) - Product Information

Application	WB, FC,E
Primary Accession	Q9ULX7
Reactivity	Human
Host	Rabbit
Clonality	Polyclonal
Isotype	Rabbit IgG
Calculated MW	37668
Antigen Region	51-80

CA14 Antibody (N-term) - Additional Information**Gene ID** 23632**Other Names**

Carbonic anhydrase 14, Carbonate dehydratase XIV, Carbonic anhydrase XIV, CA-XIV, CA14

Target/Specificity

This CA14 antibody is generated from rabbits immunized with a KLH conjugated synthetic peptide between 51-80 amino acids from the N-terminal region of human CA14.

Dilution

WB~~1:1000

FC~~1:10~50

E~~Use at an assay dependent concentration.

Format

Purified polyclonal antibody supplied in PBS with 0.09% (W/V) sodium azide. This antibody is prepared by Saturated Ammonium Sulfate (SAS) precipitation followed by dialysis against PBS.

Storage

Maintain refrigerated at 2-8°C for up to 2 weeks. For long term storage store at -20°C in small aliquots to prevent freeze-thaw cycles.

Precautions

CA14 Antibody (N-term) is for research use only and not for use in diagnostic or therapeutic procedures.

CA14 Antibody (N-term) - Protein Information**Name** CA14**Function** Reversible hydration of carbon dioxide.

Cellular Location

Membrane; Single-pass type I membrane protein

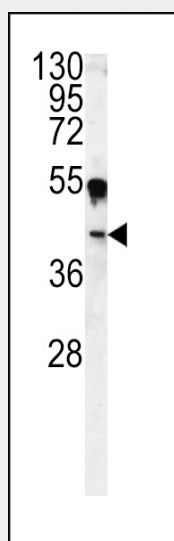
Tissue Location

High expression in all parts of the central nervous system and lower expression in adult liver, heart, small intestine, colon, kidney, urinary bladder and skeletal muscle

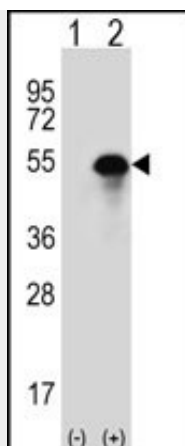
CA14 Antibody (N-term) - Protocols

Provided below are standard protocols that you may find useful for product applications.

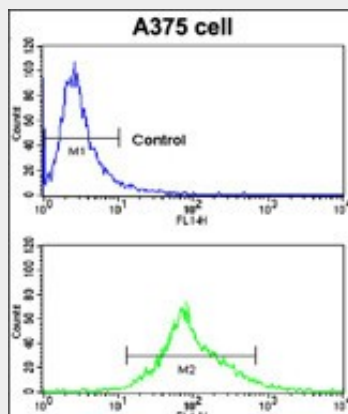
- [Western Blot](#)
- [Blocking Peptides](#)
- [Dot Blot](#)
- [Immunohistochemistry](#)
- [Immunofluorescence](#)
- [Immunoprecipitation](#)
- [Flow Cytometry](#)
- [Cell Culture](#)

CA14 Antibody (N-term) - Images

Western blot analysis of CA14 antibody (N-term) (Cat.#AP7306a) in A375 cell line lysates (35ug/lane). CA14 (arrow) was detected using the purified Pab.



Western blot analysis of CA14 (arrow) using rabbit polyclonal CA14 Antibody (N-term) (Cat.#AP7306a). 293 cell lysates (2 ug/lane) either nontransfected (Lane 1) or transiently transfected (Lane 2) with the CA14 gene.



Flow cytometric analysis of A375 cells using CA14 Antibody (N-term) (bottom histogram) compared to a negative control cell (top histogram). FITC-conjugated goat-anti-rabbit secondary antibodies were used for the analysis.

CA14 Antibody (N-term) - Background

CA14 belongs a large family of zinc metalloenzymes that catalyze the versible hydration of carbon dioxide. The protein is predicted to be a type I membrane protein and shares highest sequence similarity with the other transmembrane CA isoform, CA XII; however, they have different patterns of tissue-specific expression and thus may play different physiologic roles.

CA14 Antibody (N-term) - References

- Parkkila,S. Natl. Acad. Sci. U.S.A. 98 (4), 1918-1923 (2001)
- Fujikawa-Adachi,K., Nishimori,I. Genomics 61 (1), 74-81 (1999)
- Tarun,A.S., Bryant,B. Chem. Senses 28 (7), 621-629 (2003)