

WAVE1 Polyclonal Antibody
Catalog # AP73080**Specification**

WAVE1 Polyclonal Antibody - Product Information

Application	WB, IHC-P, IF
Primary Accession	Q92558
Reactivity	Human, Mouse, Rat
Host	Rabbit
Clonality	Polyclonal

WAVE1 Polyclonal Antibody - Additional Information**Gene ID** 8936**Other Names**

WASF1; KIAA0269; SCAR1; WAVE1; Wiskott-Aldrich syndrome protein family member 1; WASP family protein member 1; Protein WAVE-1; Verprolin homology domain-containing protein 1

Dilution

WB~~Western Blot: 1/500 - 1/2000. Immunohistochemistry: 1/100 - 1/300. Immunofluorescence: 1/200 - 1/1000. ELISA: 1/40000. Not yet tested in other applications.
IHC-P~~N/A
IF~~1:50~200

Format

Liquid in PBS containing 50% glycerol, 0.5% BSA and 0.09% (W/V) sodium azide.

Storage Conditions

-20°C

WAVE1 Polyclonal Antibody - Protein Information**Name** WASF1 ([HGNC:12732](#))**Synonyms** KIAA0269, SCAR1, WAVE1**Function**

Downstream effector molecule involved in the transmission of signals from tyrosine kinase receptors and small GTPases to the actin cytoskeleton. Promotes formation of actin filaments. Part of the WAVE complex that regulates lamellipodia formation (PubMed:29961568). The WAVE complex regulates actin filament reorganization via its interaction with the Arp2/3 complex (By similarity). As component of the WAVE1 complex, required for BDNF-NTRK2 endocytic trafficking and signaling from early endosomes (By similarity). Also involved in the regulation of mitochondrial dynamics (PubMed:29961568).

Cellular Location

Cytoplasm, cytoskeleton. Synapse {ECO:0000250|UniProtKB:Q5BJU7} Cell junction, focal adhesion. Note=Dot- like pattern in the cytoplasm. Concentrated in Rac-regulated membrane-ruffling areas (PubMed:9889097). Partial translocation to focal adhesion sites might be mediated by interaction with SORBS2 (PubMed:18559503). In neurons, colocalizes with activated NTRK2 after BDNF addition in endocytic sites through the association with TMEM108 (By similarity). {ECO:0000250|UniProtKB:Q8R5H6, ECO:0000269|PubMed:18559503, ECO:0000269|PubMed:9889097}

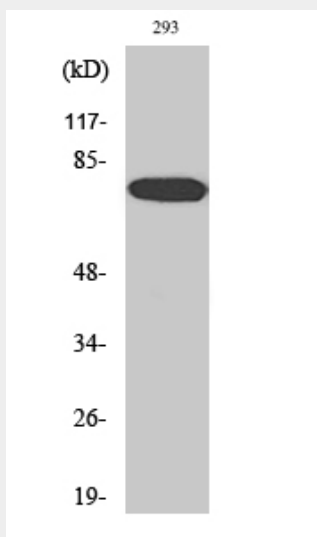
Tissue Location

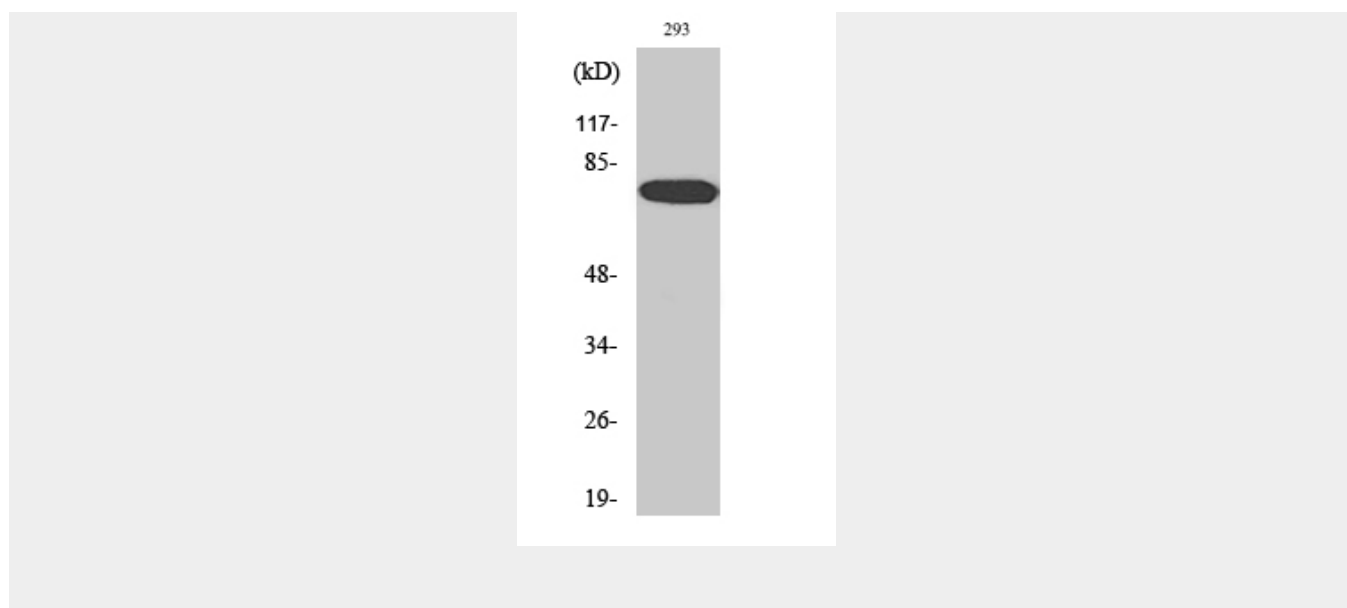
Highly expressed in brain. Lowly expressed in testis, ovary, colon, kidney, pancreas, thymus, small intestine and peripheral blood

WAVE1 Polyclonal Antibody - Protocols

Provided below are standard protocols that you may find useful for product applications.

- [Western Blot](#)
- [Blocking Peptides](#)
- [Dot Blot](#)
- [Immunohistochemistry](#)
- [Immunofluorescence](#)
- [Immunoprecipitation](#)
- [Flow Cytometry](#)
- [Cell Culture](#)

WAVE1 Polyclonal Antibody - Images



WAVE1 Polyclonal Antibody - Background

Downstream effector molecule involved in the transmission of signals from tyrosine kinase receptors and small GTPases to the actin cytoskeleton. Promotes formation of actin filaments. Part of the WAVE complex that regulates lamellipodia formation. The WAVE complex regulates actin filament reorganization via its interaction with the Arp2/3 complex (By similarity). As component of the WAVE1 complex, required for BDNF- NTRK2 endocytic trafficking and signaling from early endosomes (By similarity).