

CA5B Antibody (C-term)
Purified Rabbit Polyclonal Antibody (Pab)
Catalog # AP7308b**Specification**

CA5B Antibody (C-term) - Product Information

| | |
|-------------------|---|
| Application | WB, IHC-P, FC,E |
| Primary Accession | Q9Y2D0 |
| Other Accession | Q66HG6 , Q9QZA0 |
| Reactivity | Human, Mouse |
| Predicted | Rat |
| Host | Rabbit |
| Clonality | Polyclonal |
| Isotype | Rabbit IgG |
| Calculated MW | 36434 |
| Antigen Region | 253-283 |

CA5B Antibody (C-term) - Additional Information**Gene ID** 11238**Other Names**

Carbonic anhydrase 5B, mitochondrial, Carbonate dehydratase VB, Carbonic anhydrase VB, CA-VB, CA5B

Target/Specificity

This CA5B antibody is generated from rabbits immunized with a KLH conjugated synthetic peptide between 253-283 amino acids from the C-terminal region of human CA5B.

DilutionWB~~1:1000
IHC-P~~1:50~100
FC~~1:10~50**Format**

Purified polyclonal antibody supplied in PBS with 0.09% (W/V) sodium azide. This antibody is prepared by Saturated Ammonium Sulfate (SAS) precipitation followed by dialysis against PBS.

Storage

Maintain refrigerated at 2-8°C for up to 2 weeks. For long term storage store at -20°C in small aliquots to prevent freeze-thaw cycles.

Precautions

CA5B Antibody (C-term) is for research use only and not for use in diagnostic or therapeutic procedures.

CA5B Antibody (C-term) - Protein Information

Name CA5B

Function Mitochondrial carbonic anhydrase that catalyzes the reversible conversion of carbon dioxide to bicarbonate/HCO₃.

Cellular Location

Mitochondrion.

Tissue Location

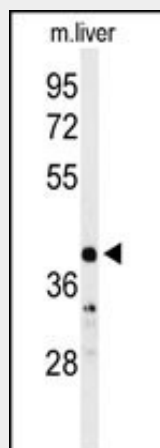
Strongest expression in heart, pancreas, kidney, placenta, lung, and skeletal muscle. Not expressed in liver

CA5B Antibody (C-term) - Protocols

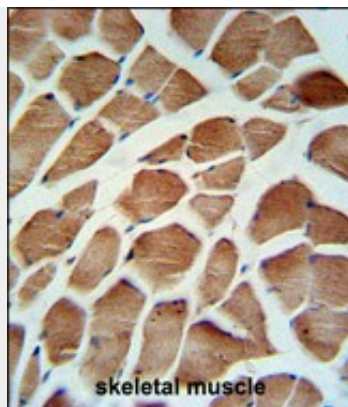
Provided below are standard protocols that you may find useful for product applications.

- [Western Blot](#)
- [Blocking Peptides](#)
- [Dot Blot](#)
- [Immunohistochemistry](#)
- [Immunofluorescence](#)
- [Immunoprecipitation](#)
- [Flow Cytometry](#)
- [Cell Culture](#)

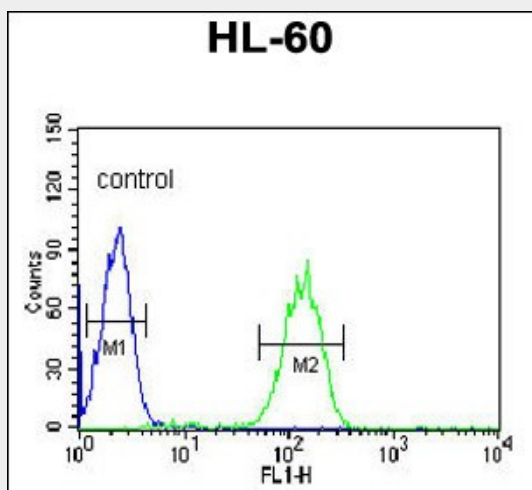
CA5B Antibody (C-term) - Images



Western blot analysis of CA5B Antibody (C-term) (Cat. #AP7308b) in mouse liver tissue lysates (35ug/lane). CA5B (arrow) was detected using the purified Pab.



CA5B Antibody (C-term) (Cat. #AP7308b) IHC analysis in formalin fixed and paraffin embedded human skeletal muscle followed by peroxidase conjugation of the secondary antibody and DAB staining. This data demonstrates the use of the CA5B Antibody (C-term) for immunohistochemistry. Clinical relevance has not been evaluated.



CA5B Antibody (C-term) (Cat. #AP7308b) flow cytometric analysis of HL-60 cells (right histogram) compared to a negative control cell (left histogram). FITC-conjugated goat-anti-rabbit secondary antibodies were used for the analysis.

CA5B Antibody (C-term) - Background

CA5B belongs a large family of zinc metalloenzymes that catalyze the reversible hydration of carbon dioxide. This protein is localized in the mitochondria and shows the highest sequence similarity to the other mitochondrial CA, CA VA. The protein has a wider tissue distribution than CA VA, which is restricted to the liver.

CA5B Antibody (C-term) - References

- Vullo,D., Nishimori,I. Bioorg. Med. Chem. Lett. 17 (5), 1336-1340 (2007)
- Shah,G.N. Proc. Natl. Acad. Sci. U.S.A. 97 (4), 1677-1682 (2000)
- Fujikawa-Adachi,K. J. Biol. Chem. 274 (30), 21228-21233 (1999)