

ZC3H11A Polyclonal Antibody
Catalog # AP73119**Specification**

ZC3H11A Polyclonal Antibody - Product Information

Application	WB
Primary Accession	O75152
Reactivity	Human, Monkey
Host	Rabbit
Clonality	Polyclonal

ZC3H11A Polyclonal Antibody - Additional Information**Gene ID** 9877**Other Names**

ZC3H11A; KIAA0663; ZC3HDC11A; Zinc finger CCCH domain-containing protein 11A

Dilution

WB~~Western Blot: 1/500 - 1/2000. ELISA: 1/20000. Not yet tested in other applications.

Format

Liquid in PBS containing 50% glycerol, 0.5% BSA and 0.09% (W/V) sodium azide.

Storage Conditions

-20°C

ZC3H11A Polyclonal Antibody - Protein Information**Name** ZC3H11A**Synonyms** KIAA0663, ZC3HDC11A**Function**

Through its association with TREX complex components, may participate in the export and post-transcriptional coordination of selected mRNA transcripts, including those required to maintain the metabolic processes in embryonic cells (PubMed:22928037, PubMed:37356722). Binds RNA (PubMed:29610341, PubMed:37356722).

Cellular Location

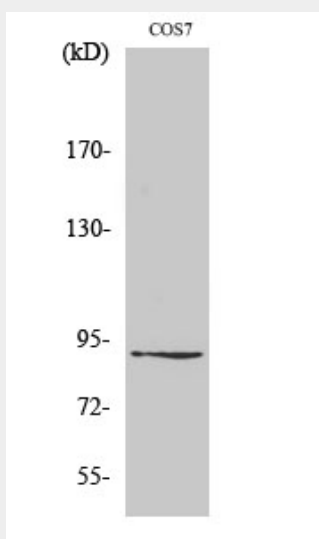
Nucleus. Nucleus speckle. Note=Retained in nuclear speckles though interaction with PABPN1.

ZC3H11A Polyclonal Antibody - Protocols

Provided below are standard protocols that you may find useful for product applications.

- [Western Blot](#)
- [Blocking Peptides](#)
- [Dot Blot](#)
- [Immunohistochemistry](#)
- [Immunofluorescence](#)
- [Immunoprecipitation](#)
- [Flow Cytometry](#)
- [Cell Culture](#)

ZC3H11A Polyclonal Antibody - Images



ZC3H11A Polyclonal Antibody - Background

Involved in nuclear mRNA export; probably mediated by association with the TREX complex.