

Elmo1 Polyclonal Antibody
Catalog # AP73213**Specification**

Elmo1 Polyclonal Antibody - Product Information

Application	WB
Primary Accession	Q92556
Reactivity	Human, Mouse
Host	Rabbit
Clonality	Polyclonal

Elmo1 Polyclonal Antibody - Additional Information**Gene ID** 9844**Other Names**

ELMO1; KIAA0281; Engulfment and cell motility protein 1; Protein ced-12 homolog

Dilution

WB~~Western Blot: 1/500 - 1/2000. ELISA: 1/20000. Not yet tested in other applications.

Format

Liquid in PBS containing 50% glycerol, 0.5% BSA and 0.09% (W/V) sodium azide.

Storage Conditions

-20°C

Elmo1 Polyclonal Antibody - Protein Information**Name** ELMO1**Synonyms** KIAA0281**Function**

Involved in cytoskeletal rearrangements required for phagocytosis of apoptotic cells and cell motility. Acts in association with DOCK1 and CRK. Was initially proposed to be required in complex with DOCK1 to activate Rac Rho small GTPases. May enhance the guanine nucleotide exchange factor (GEF) activity of DOCK1.

Cellular Location

Cytoplasm. Cell membrane. Note=Translocation to plasma membrane seems to be mediated by DOCK1 and CRK

Tissue Location

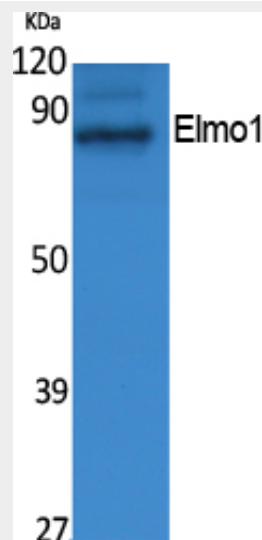
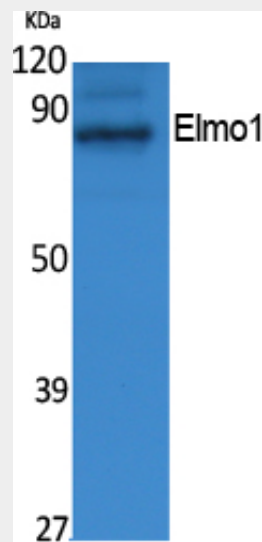
Widely expressed, with a higher expression in the spleen and placenta

Elmo1 Polyclonal Antibody - Protocols

Provided below are standard protocols that you may find useful for product applications.

- [Western Blot](#)
- [Blocking Peptides](#)
- [Dot Blot](#)
- [Immunohistochemistry](#)
- [Immunofluorescence](#)
- [Immunoprecipitation](#)
- [Flow Cytometry](#)
- [Cell Culture](#)

Elmo1 Polyclonal Antibody - Images



Elmo1 Polyclonal Antibody - Background

Involved in cytoskeletal rearrangements required for phagocytosis of apoptotic cells and cell

motility. Acts in association with DOCK1 and CRK. Was initially proposed to be required in complex with DOCK1 to activate Rac Rho small GTPases. May enhance the guanine nucleotide exchange factor (GEF) activity of DOCK1.