

**M6A Polyclonal Antibody**  
**Catalog # AP73227****Specification**

---

**M6A Polyclonal Antibody - Product Information**

Application	WB
Primary Accession	<a href="#">P51674</a>
Reactivity	Human, Mouse, Rat
Host	Rabbit
Clonality	Polyclonal

**M6A Polyclonal Antibody - Additional Information****Gene ID** 2823**Other Names**

GPM6A; M6A; Neuronal membrane glycoprotein M6-a; M6a

**Dilution**

WB~~Western Blot: 1/500 - 1/2000. ELISA: 1/5000. Not yet tested in other applications.

**Format**

Liquid in PBS containing 50% glycerol, 0.5% BSA and 0.09% (W/V) sodium azide.

**Storage Conditions**

-20°C

**M6A Polyclonal Antibody - Protein Information****Name** GPM6A**Synonyms** M6A**Function**

Involved in neuronal differentiation, including differentiation and migration of neuronal stem cells. Plays a role in neuronal plasticity and is involved in neurite and filopodia outgrowth, filopodia motility and probably synapse formation. GPM6A-induced filopodia formation involves mitogen-activated protein kinase (MAPK) and Src signaling pathways. May be involved in neuronal NGF-dependent Ca(2+) influx. May be involved in regulation of endocytosis and intracellular trafficking of G-protein-coupled receptors (GPCRs); enhances internalization and recycling of mu-type opioid receptor.

**Cellular Location**

Cell membrane {ECO:0000250|UniProtKB:P35802}; Multi-pass membrane protein {ECO:0000250|UniProtKB:P35802}. Cell projection, axon {ECO:0000250|UniProtKB:P35802}. Cell projection, growth cone {ECO:0000250|UniProtKB:P35802}. Cell projection, dendritic spine {ECO:0000250|UniProtKB:Q812E9}. Cell projection, filopodium {ECO:0000250|UniProtKB:Q812E9}. Cell projection, neuron projection

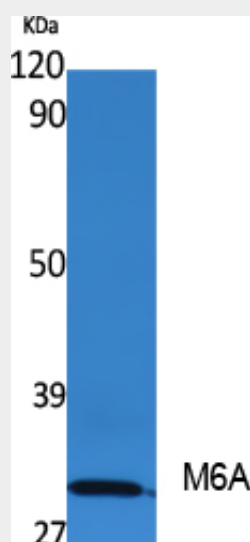
{ECO:0000250|UniProtKB:Q812E9}. Note=Localizes to cholesterol-rich lipid rafts of the plasma membrane of hippocampal neurons. Localized to plasma membrane of cell bodies and neurites of hippocampal neurons Localized in membrane protrusions (filopodia and spines) of primary hippocampal neurons (By similarity). Localized to the growth cone edge membrane of elongating axons (By similarity) {ECO:0000250|UniProtKB:P35802, ECO:0000250|UniProtKB:Q812E9}

## M6A Polyclonal Antibody - Protocols

Provided below are standard protocols that you may find useful for product applications.

- [Western Blot](#)
- [Blocking Peptides](#)
- [Dot Blot](#)
- [Immunohistochemistry](#)
- [Immunofluorescence](#)
- [Immunoprecipitation](#)
- [Flow Cytometry](#)
- [Cell Culture](#)

## M6A Polyclonal Antibody - Images



## M6A Polyclonal Antibody - Background

Involved in neuronal differentiation, including differentiation and migration of neuronal stem cells. Plays a role in neuronal plasticity and is involved in neurite and filopodia outgrowth, filopodia motility and probably synapse formation. GPM6A-induced filopodia formation involves mitogen-activated protein kinase (MAPK) and Src signaling pathways. May be involved in neuronal NGF-dependent Ca<sup>2+</sup> influx. May be involved in regulation of endocytosis and intracellular trafficking of G- protein-coupled receptors (GPCRs); enhances internalization and recycling of mu-type opioid receptor.