

**A1BG Antibody (C-term)**  
**Purified Rabbit Polyclonal Antibody (Pab)**  
**Catalog # AP7322b****Specification**

---

**A1BG Antibody (C-term) - Product Information**

Application	IHC-P, WB,E
Primary Accession	<a href="#">P04217</a>
Reactivity	Human
Host	Rabbit
Clonality	Polyclonal
Isotype	Rabbit IgG
Calculated MW	54254
Antigen Region	421-449

**A1BG Antibody (C-term) - Additional Information****Gene ID 1****Other Names**

Alpha-1B-glycoprotein, Alpha-1-B glycoprotein, A1BG

**Target/Specificity**

This A1BG antibody is generated from rabbits immunized with a KLH conjugated synthetic peptide between 421-449 amino acids from the C-terminal region of human A1BG.

**Dilution**

IHC-P~~1:50~100

WB~~1:1000

E~~Use at an assay dependent concentration.

**Format**

Purified polyclonal antibody supplied in PBS with 0.09% (W/V) sodium azide. This antibody is prepared by Saturated Ammonium Sulfate (SAS) precipitation followed by dialysis against PBS.

**Storage**

Maintain refrigerated at 2-8°C for up to 2 weeks. For long term storage store at -20°C in small aliquots to prevent freeze-thaw cycles.

**Precautions**

A1BG Antibody (C-term) is for research use only and not for use in diagnostic or therapeutic procedures.

**A1BG Antibody (C-term) - Protein Information**

**Name** A1BG

**Cellular Location**

Secreted.

#### **Tissue Location**

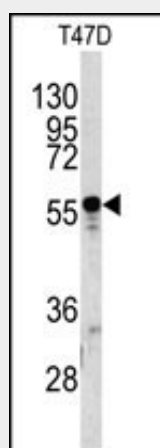
Plasma.

#### **A1BG Antibody (C-term) - Protocols**

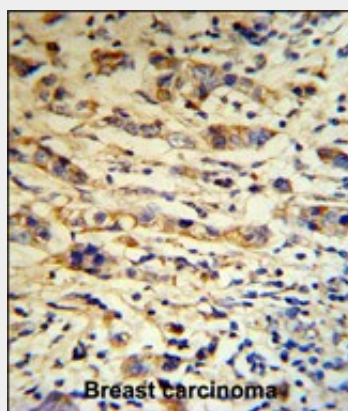
Provided below are standard protocols that you may find useful for product applications.

- [Western Blot](#)
- [Blocking Peptides](#)
- [Dot Blot](#)
- [Immunohistochemistry](#)
- [Immunofluorescence](#)
- [Immunoprecipitation](#)
- [Flow Cytometry](#)
- [Cell Culture](#)

#### **A1BG Antibody (C-term) - Images**



Western blot analysis of A1BG antibody (C-term) (Cat.#AP7322b) in T47D cell line lysates (35ug/lane). A1BG (arrow) was detected using the purified Pab.



A1BG Antibody (C-term) (RB18670) IHC analysis in formalin fixed and paraffin embedded human breast carcinoma tissue followed by peroxidase conjugation of the secondary antibody and DAB staining. This data demonstrates the use of the A1BG Antibody (C-term) for

immunohistochemistry. Clinical relevance has not been evaluated.

#### **A1BG Antibody (C-term) - Background**

A1BG is a plasma glycoprotein of unknown function. The protein shows sequence similarity to the variable regions of some immunoglobulin supergene family member proteins.

#### **A1BG Antibody (C-term) - References**

Tian,M., Cui,Y.Z. BMC Cancer 8, 241 (2008)  
Eiberg,H., Bisgaard,M.L. Clin. Genet. 36 (6), 415-418 (1989)