

α-SMA Polyclonal Antibody
Catalog # AP73236**Specification**

α-SMA Polyclonal Antibody - Product Information

Application	WB, IHC-P
Primary Accession	P62736
Reactivity	Human, Mouse, Rat
Host	Rabbit
Clonality	Polyclonal

α-SMA Polyclonal Antibody - Additional Information**Gene ID** 59**Other Names**

ACTA2; ACTSA; ACTVS; GIG46; Actin; aortic smooth muscle; Alpha-actin-2; Cell growth-inhibiting gene 46 protein

Dilution

WB~~Western Blot: 1/500 - 1/2000. Immunohistochemistry: 1/100 - 1/300. ELISA: 1/20000. Not yet tested in other applications.

IHC-P~~N/A

Format

Liquid in PBS containing 50% glycerol, 0.5% BSA and 0.05% sodium azide.

Storage Conditions

-20°C

α-SMA Polyclonal Antibody - Protein Information**Name** ACTA2**Synonyms** ACTSA, ACTVS**Function**

Actins are highly conserved proteins that are involved in various types of cell motility and are ubiquitously expressed in all eukaryotic cells.

Cellular Location

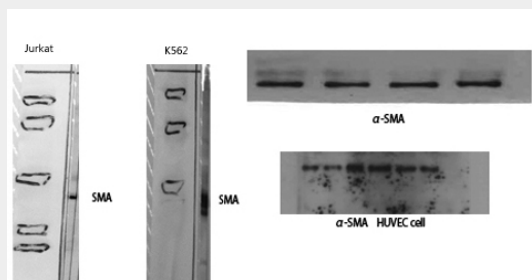
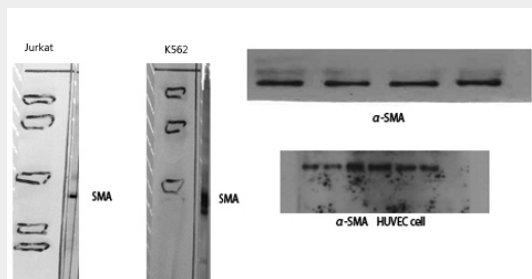
Cytoplasm, cytoskeleton.

α-SMA Polyclonal Antibody - Protocols

Provided below are standard protocols that you may find useful for product applications.

- [Western Blot](#)
- [Blocking Peptides](#)
- [Dot Blot](#)
- [Immunohistochemistry](#)
- [Immunofluorescence](#)
- [Immunoprecipitation](#)
- [Flow Cytometry](#)
- [Cell Culture](#)

α -SMA Polyclonal Antibody - Images



α -SMA Polyclonal Antibody - Background

Actins are highly conserved proteins that are involved in various types of cell motility and are ubiquitously expressed in all eukaryotic cells.