

APLP-1 Polyclonal Antibody
Catalog # AP73241**Specification**

APLP-1 Polyclonal Antibody - Product Information

Application	WB
Primary Accession	P51693
Reactivity	Human, Mouse
Host	Rabbit
Clonality	Polyclonal

APLP-1 Polyclonal Antibody - Additional Information**Gene ID** 333**Other Names**

APLP1; Amyloid-like protein 1; APLP; APLP-1

Dilution

WB~~Western Blot: 1/500 - 1/2000. IHC-p: 1:100-300 ELISA: 1/10000. Not yet tested in other applications.

Format

Liquid in PBS containing 50% glycerol, 0.5% BSA and 0.09% (W/V) sodium azide.

Storage Conditions

-20°C

APLP-1 Polyclonal Antibody - Protein Information**Name** APLP1**Function**

May play a role in postsynaptic function. The C-terminal gamma-secretase processed fragment, ALID1, activates transcription activation through APBB1 (Fe65) binding (By similarity). Couples to JIP signal transduction through C-terminal binding. May interact with cellular G-protein signaling pathways. Can regulate neurite outgrowth through binding to components of the extracellular matrix such as heparin and collagen I.

Cellular Location

Cell membrane; Single-pass type I membrane protein

Tissue Location

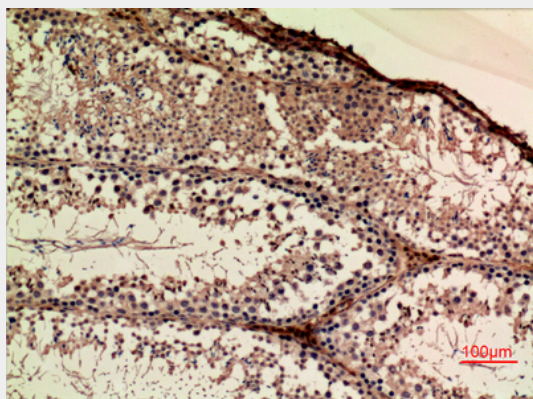
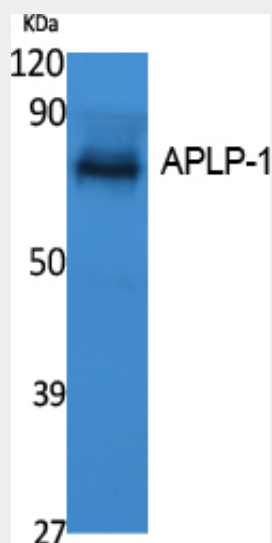
Expressed in the cerebral cortex where it is localized to the postsynaptic density (PSD)

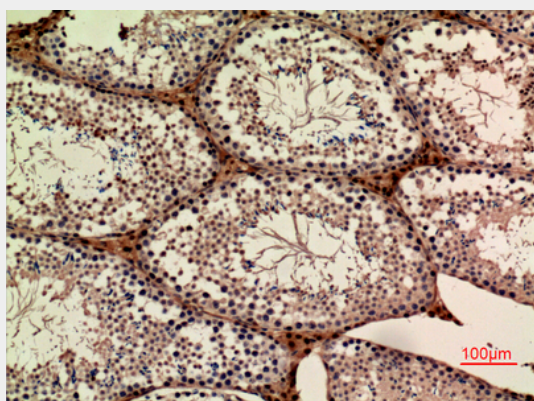
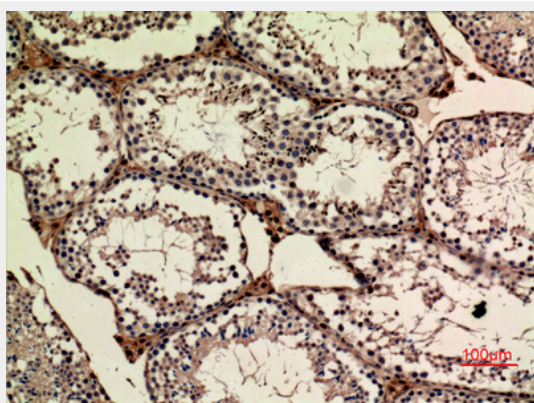
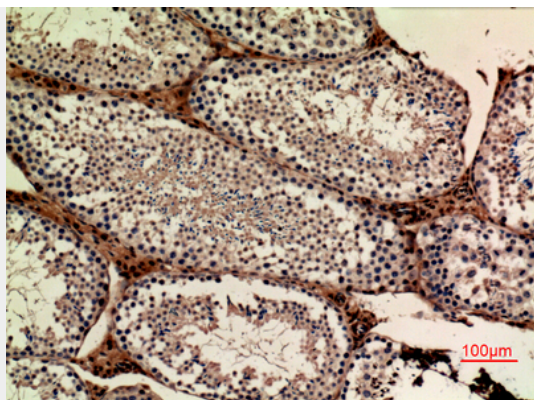
APLP-1 Polyclonal Antibody - Protocols

Provided below are standard protocols that you may find useful for product applications.

- [Western Blot](#)
- [Blocking Peptides](#)
- [Dot Blot](#)
- [Immunohistochemistry](#)
- [Immunofluorescence](#)
- [Immunoprecipitation](#)
- [Flow Cytometry](#)
- [Cell Culture](#)

APLP-1 Polyclonal Antibody - Images





APLP-1 Polyclonal Antibody - Background

May play a role in postsynaptic function. The C-terminal gamma-secretase processed fragment, ALID1, activates transcription activation through APBB1 (Fe65) binding (By similarity). Couples to JIP signal transduction through C-terminal binding. May interact with cellular G-protein signaling pathways. Can regulate neurite outgrowth through binding to components of the extracellular matrix such as heparin and collagen I.