

**G-CSFR Polyclonal Antibody**  
**Catalog # AP73252****Specification**

---

**G-CSFR Polyclonal Antibody - Product Information**

Application	WB
Primary Accession	<a href="#">Q99062</a>
Reactivity	Human
Host	Rabbit
Clonality	Polyclonal

**G-CSFR Polyclonal Antibody - Additional Information****Gene ID** 1441**Other Names**

CSF3R; GCSFR; Granulocyte colony-stimulating factor receptor; G-CSF receptor; G-CSF-R; CD antigen CD114

**Dilution**

WB~~Western Blot: 1/500 - 1/2000. ELISA: 1/10000. Not yet tested in other applications.

**Format**

Liquid in PBS containing 50% glycerol, 0.5% BSA and 0.09% (W/V) sodium azide.

**Storage Conditions**

-20°C

**G-CSFR Polyclonal Antibody - Protein Information****Name** CSF3R**Synonyms** GCSFR**Function**

Receptor for granulocyte colony-stimulating factor (CSF3), essential for granulocytic maturation. Plays a crucial role in the proliferation, differentiation and survival of cells along the neutrophilic lineage. In addition it may function in some adhesion or recognition events at the cell surface.

**Cellular Location**

[Isoform 2]: Secreted.

**Tissue Location**

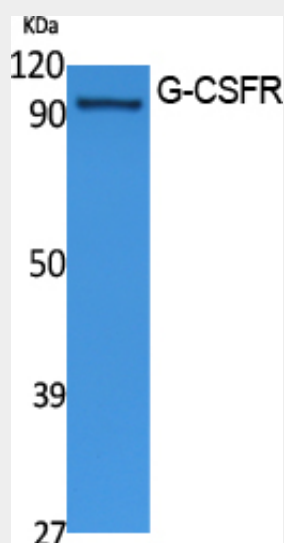
One or several isoforms have been found in myelogenous leukemia cell line KG-1, leukemia U-937 cell line, in bone marrow cells, placenta, and peripheral blood granulocytes. Isoform GCSFR-2 is found only in leukemia U-937 cells. Isoform GCSFR-3 is highly expressed in placenta

## G-CSFR Polyclonal Antibody - Protocols

Provided below are standard protocols that you may find useful for product applications.

- [Western Blot](#)
- [Blocking Peptides](#)
- [Dot Blot](#)
- [Immunohistochemistry](#)
- [Immunofluorescence](#)
- [Immunoprecipitation](#)
- [Flow Cytometry](#)
- [Cell Culture](#)

## G-CSFR Polyclonal Antibody - Images



## G-CSFR Polyclonal Antibody - Background

Receptor for granulocyte colony-stimulating factor (CSF3), essential for granulocytic maturation. Plays a crucial role in the proliferation, differentiation and survival of cells along the neutrophilic lineage. In addition it may function in some adhesion or recognition events at the cell surface.