

**SLP-76 Polyclonal Antibody**  
**Catalog # AP73254****Specification**

---

**SLP-76 Polyclonal Antibody - Product Information**

Application	WB, IHC-P
Primary Accession	<a href="#">Q13094</a>
Reactivity	Human, Mouse, Rat
Host	Rabbit
Clonality	Polyclonal

**SLP-76 Polyclonal Antibody - Additional Information****Gene ID** 3937**Other Names**

LCP2; Lymphocyte cytosolic protein 2; SH2 domain-containing leukocyte protein of 76 kDa; SLP-76 tyrosine phosphoprotein; SLP76

**Dilution**

WB~~Western Blot: 1/500 - 1/2000. IHC-p: 1:100-300 ELISA: 1/10000. Not yet tested in other applications.

IHC-P~~N/A

**Format**

Liquid in PBS containing 50% glycerol, 0.5% BSA and 0.09% (W/V) sodium azide.

**Storage Conditions**

-20°C

**SLP-76 Polyclonal Antibody - Protein Information****Name** LCP2**Function**

Adapter protein primarily involved in signaling pathways within T-cells, as well as other immune cells such as platelets, mast cells, and natural killer (NK) cells (PubMed:<a href="http://www.uniprot.org/citations/11313406" target="\_blank">11313406</a>, PubMed:<a href="http://www.uniprot.org/citations/33159816" target="\_blank">33159816</a>). Plays a crucial role for transducing signal from the T-cell receptor (TCR) after antigen recognition leading to T-cell activation. Mechanistically, once phosphorylated by the kinase ZAP70, mediates interactions with the guanine-nucleotide exchange factor VAV1, the adapter protein NCK and the kinase ITK (PubMed:<a href="http://www.uniprot.org/citations/8673706" target="\_blank">8673706</a>, PubMed:<a href="http://www.uniprot.org/citations/8702662" target="\_blank">8702662</a>). In turn, stimulates the activation of PKC-theta/PRKCQ and NF-kappa-B transcriptional activity in response to CD3 and CD28 costimulation (PubMed:<a href="http://www.uniprot.org/citations/11313406" target="\_blank">11313406</a>). Also plays an essential role in AGER- induced signaling pathways including p38 MAPK and ERK1/2 activation

leading to cytokine release and pro-inflammatory responses (PubMed:<a href="http://www.uniprot.org/citations/33436632" target="\_blank">33436632</a>).

#### Cellular Location

Cytoplasm.

#### Tissue Location

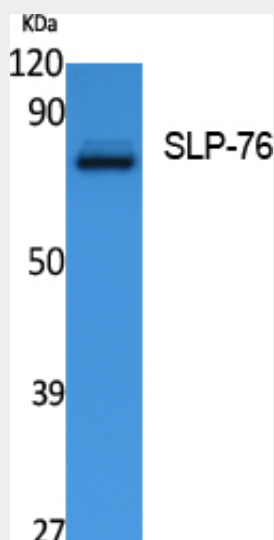
Highly expressed in spleen, thymus and peripheral blood leukocytes. Highly expressed also in T-cell and monocytic cell lines, expressed at lower level in B-cell lines. Not detected in fibroblast or neuroblastoma cell lines

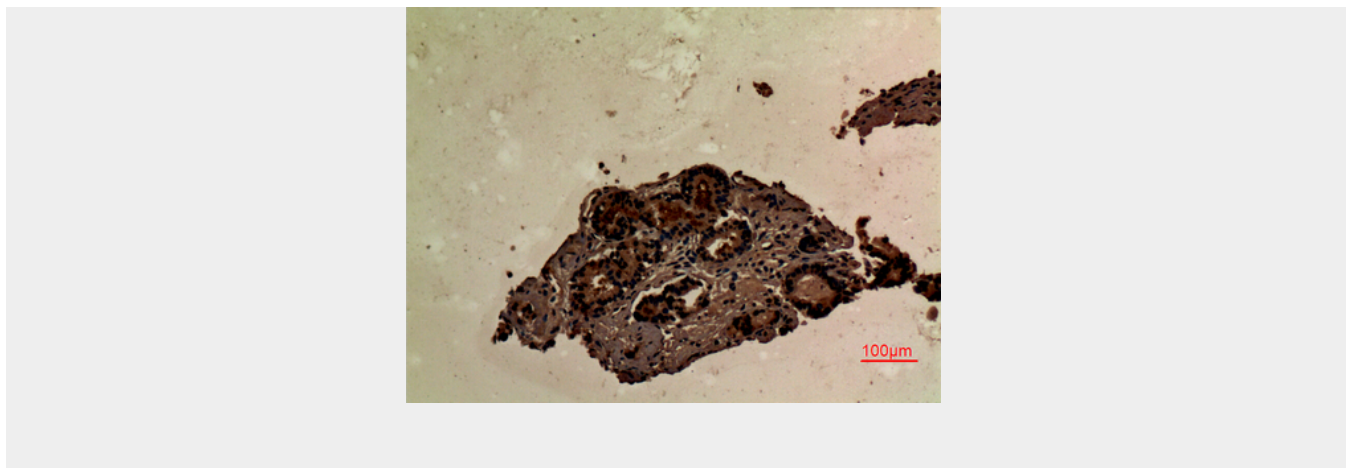
### SLP-76 Polyclonal Antibody - Protocols

Provided below are standard protocols that you may find useful for product applications.

- [Western Blot](#)
- [Blocking Peptides](#)
- [Dot Blot](#)
- [Immunohistochemistry](#)
- [Immunofluorescence](#)
- [Immunoprecipitation](#)
- [Flow Cytometry](#)
- [Cell Culture](#)

### SLP-76 Polyclonal Antibody - Images



**SLP-76 Polyclonal Antibody - Background**

Involved in T-cell antigen receptor mediated signaling.