

Stathmin-2 Polyclonal Antibody
Catalog # AP73259**Specification**

Stathmin-2 Polyclonal Antibody - Product Information

Application	WB, IHC-P
Primary Accession	Q93045
Reactivity	Human, Mouse, Rat
Host	Rabbit
Clonality	Polyclonal

Stathmin-2 Polyclonal Antibody - Additional Information**Gene ID** 11075**Other Names**

STMN2; SCG10; SCGN10; Stathmin-2; Superior cervical ganglion-10 protein; Protein SCG10

Dilution

WB~~Western Blot: 1/500 - 1/2000. IHC-p: 1:100-300 ELISA: 1/5000. Not yet tested in other applications.

IHC-P~~N/A

Format

Liquid in PBS containing 50% glycerol, 0.5% BSA and 0.09% (W/V) sodium azide.

Storage Conditions

-20°C

Stathmin-2 Polyclonal Antibody - Protein Information**Name** STMN2**Synonyms** SCG10, SCGN10**Function**

Regulator of microtubule stability. When phosphorylated by MAPK8, stabilizes microtubules and consequently controls neurite length in cortical neurons. In the developing brain, negatively regulates the rate of exit from multipolar stage and retards radial migration from the ventricular zone (By similarity).

Cellular Location

Cytoplasm. Cytoplasm, perinuclear region. Cell projection, growth cone. Membrane; Peripheral membrane protein; Cytoplasmic side. Cell projection, axon. Golgi apparatus. Endosome. Cell projection, lamellipodium. Note=Associated with punctate structures in the perinuclear cytoplasm, axons, and growth cones of developing neurons. SCG10 exists in both soluble and membrane-bound forms. Colocalized with CIB1 in neurites of developing hippocampal primary neurons (By similarity). Colocalized with CIB1 in the cell body, neuritis and growth cones of neurons.

Colocalized with CIB1 to the leading edge of lamellipodia.

Tissue Location

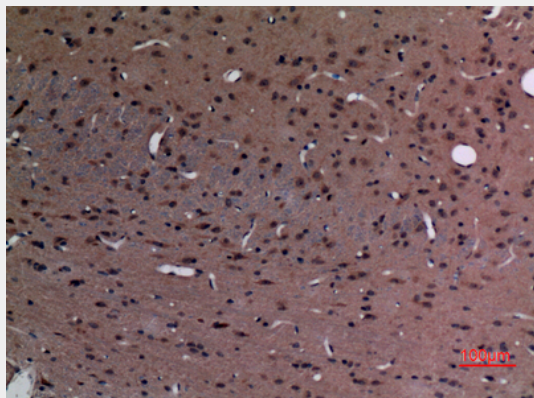
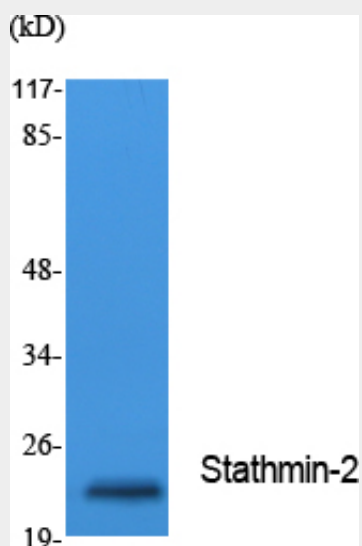
Neuron specific.

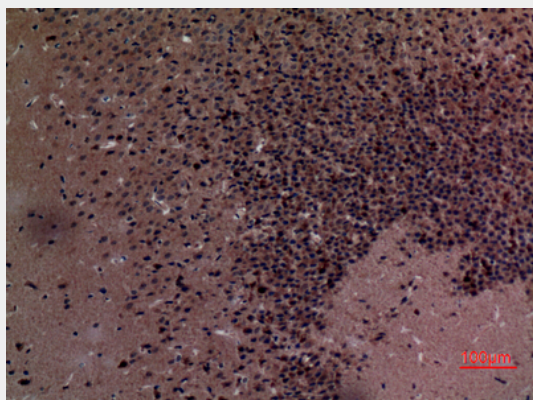
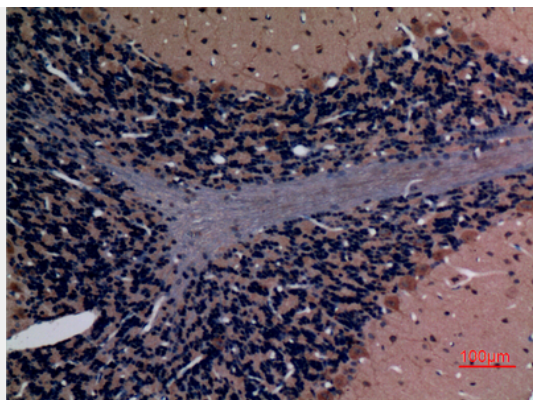
Stathmin-2 Polyclonal Antibody - Protocols

Provided below are standard protocols that you may find useful for product applications.

- [Western Blot](#)
- [Blocking Peptides](#)
- [Dot Blot](#)
- [Immunohistochemistry](#)
- [Immunofluorescence](#)
- [Immunoprecipitation](#)
- [Flow Cytometry](#)
- [Cell Culture](#)

Stathmin-2 Polyclonal Antibody - Images





Stathmin-2 Polyclonal Antibody - Background

Regulator of microtubule stability. When phosphorylated by MAPK8, stabilizes microtubules and consequently controls neurite length in cortical neurons. In the developing brain, negatively regulates the rate of exit from multipolar stage and retards radial migration from the ventricular zone (By similarity).